

Thread Charts

Thread	Consumption	Name	Brother	Country	Isacord	Polyester	Madeira Rayon	Robison-Anton	Rayon
1	1.1% (0.4 m)	Scholastic	322		0811		1024		2465
2	1.1% (0.4 m)	Almond Oil	012		0861		1072		2316
3	1.0% (0.4 m)	Scholastic	322		0811		1024		2465
4	1.0% (0.4 m)	Almond Oil	012		0861		1072		2316
5	0.9% (0.3 m)	Scholastic	322		0811		1024		2465
6	0.9% (0.3 m)	Almond Oil	012		0861		1072		2316
7	0.8% (0.3 m)	Scholastic	322		0811		1024		2465
8	0.8% (0.3 m)	Almond Oil	012		0861		1072		2316
9	15.4% (5.8 m)	Begonia	155		2220		1117		2248
10	25.6% (9.6 m)	Pale Pink	122		2153		1321		2259
11	22.6% (8.5 m)	Ultramarine	575		3600		1177		2442
12	19.6% (7.4 m)	Dark Purple	635		3541		1033		2380
13	9.3% (3.5 m)	Almond Oil	012		0861		1072		2316

Upper thread 37.7 m
 Bobbin 12.6 m

This documentation was created with Embird 2004 software registered to Shane Reynolds.
 For more information regarding Embird 2004 please visit web site at <http://www.embirdusa.com>.
 Note: These are the closest threads Embird 2004 was able to find. They might differ from the real colors in some cases.

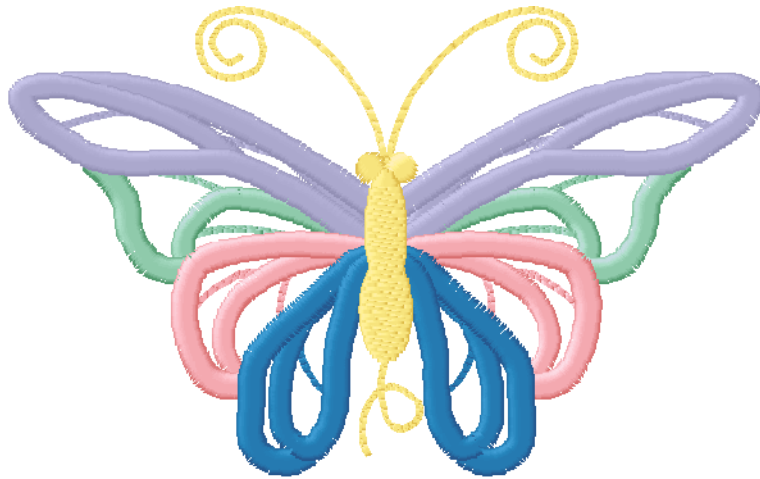


Thread Charts

Thread	Consumption	Name	Brother	Country	Isacord	Polyester	Madeira	Rayon	Robison-Anton	Rayon
1	1.1% (0.3 m)	Scholastic	322		0811		1024			2465
2	1.1% (0.3 m)	Almond Oil	012		0861		1072			2316
3	0.9% (0.3 m)	Scholastic	322		0811		1024			2465
4	0.9% (0.2 m)	Almond Oil	012		0861		1072			2316
5	1.4% (0.4 m)	Scholastic	322		0811		1024			2465
6	1.4% (0.4 m)	Almond Oil	012		0861		1072			2316
7	0.9% (0.3 m)	Scholastic	322		0811		1024			2465
8	0.9% (0.2 m)	Almond Oil	012		0861		1072			2316
9	13.2% (3.5 m)	Brook Green	512		3910		1047			2238
10	30.4% (8.2 m)	Lavender	623		3251		1261			2304
11	16.7% (4.5 m)	Pink	122		2155		1116			2423
12	21.7% (5.8 m)	Dark Turquoise Blue	015		3902		1029			2529
13	9.2% (2.5 m)	Mustard	370		0640		1066			2557

Upper thread 26.9 m
 Bobbin 9.0 m

This documentation was created with Embird 2004 software registered to Shane Reynolds.
 For more information regarding Embird 2004 please visit web site at <http://www.embirdusa.com>.
 Note: These are the closest threads Embird 2004 was able to find. They might differ from the real colors in some cases.



Thread Charts

Thread	Consumption	Name	Brother	Country	Isacord	Polyester	Madeira	Rayon	Robison-Anton	Rayon
1	0.8% (0.3 m)	Scholastic	322		0811		1024			2465
2	0.8% (0.3 m)	Almond Oil	012		0861		1072			2316
3	1.4% (0.4 m)	Scholastic	322		0811		1024			2465
4	1.4% (0.4 m)	Almond Oil	012		0861		1072			2316
5	1.1% (0.3 m)	Scholastic	322		0811		1024			2465
6	1.1% (0.3 m)	Almond Oil	012		0861		1072			2316
7	1.0% (0.3 m)	Scholastic	322		0811		1024			2465
8	1.0% (0.3 m)	Almond Oil	012		0861		1072			2316
9	10.1% (3.1 m)	Dark Turquoise Blue	015		3902		1029			2529
10	35.6% (11.0 m)	Ultramarine	575		3600		1177			2442
11	14.6% (4.5 m)	Lavender	623		3251		1261			2304
12	22.0% (6.8 m)	Dark Purple	635		3541		1033			2380
13	9.0% (2.8 m)	Mustard	370		0640		1066			2557

Upper thread 30.8 m
 Bobbin 10.3 m

This documentation was created with Embird 2004 software registered to Shane Reynolds.
 For more information regarding Embird 2004 please visit web site at <http://www.embirdusa.com>.
 Note: These are the closest threads Embird 2004 was able to find. They might differ from the real colors in some cases.



Thread Charts

Thread	Consumption	Name	Brother	Country	Isacord	Polyester	Madeira Rayon	Robison-Anton	Rayon
1	1.0% (0.3 m)	Scholastic	322		0811		1024		2465
2	1.0% (0.3 m)	Almond Oil	012		0861		1072		2316
3	1.4% (0.5 m)	Scholastic	322		0811		1024		2465
4	1.4% (0.5 m)	Almond Oil	012		0861		1072		2316
5	1.3% (0.4 m)	Scholastic	322		0811		1024		2465
6	1.3% (0.4 m)	Almond Oil	012		0861		1072		2316
7	11.5% (3.7 m)	Baja Blue	015		3612		1275		2527
8	39.8% (12.9 m)	Isle Green	586		4643		1298		2448
9	29.4% (9.5 m)	Dark Turquoise Blue	015		3902		1029		2529
10	11.8% (3.8 m)	Almond Oil	012		0861		1072		2316

Upper thread 32.3 m
 Bobbin 10.8 m

This documentation was created with Embird 2004 software registered to Shane Reynolds.
 For more information regarding Embird 2004 please visit web site at <http://www.embirdusa.com>.
 Note: These are the closest threads Embird 2004 was able to found. They might differ from the real colors in some cases.

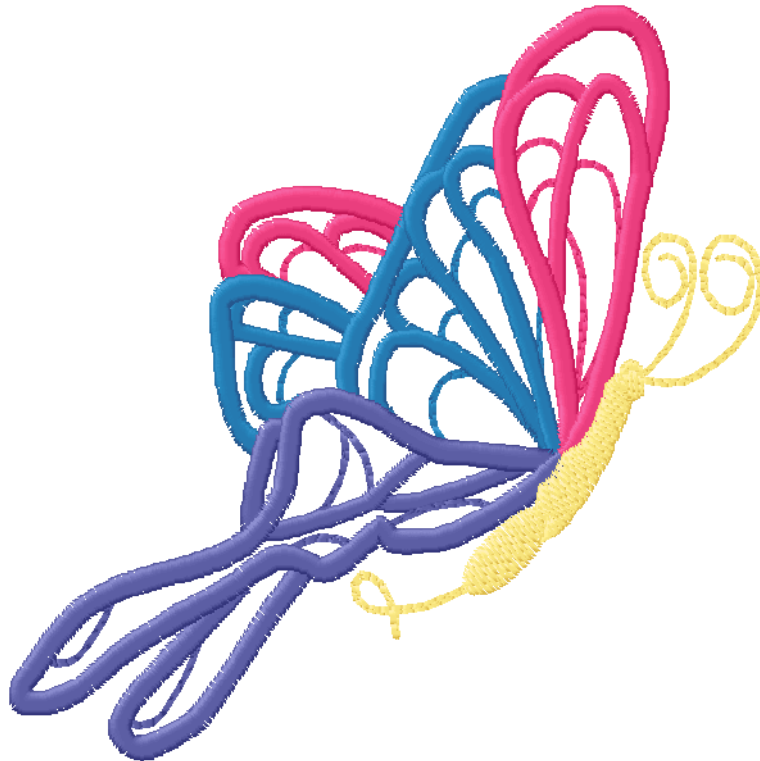


Thread Charts

Thread	Consumption	Name	Brother	Country	Isacord	Polyester	Madeira	Rayon	Robison-Anton	Rayon
1	1.6% (0.4 m)	Scholastic	322		0811		1024		2465	
2	1.5% (0.4 m)	Almond Oil	012		0861		1072		2316	
3	1.2% (0.3 m)	Scholastic	322		0811		1024		2465	
4	1.1% (0.3 m)	Almond Oil	012		0861		1072		2316	
5	1.6% (0.4 m)	Scholastic	322		0811		1024		2465	
6	1.5% (0.4 m)	Almond Oil	012		0861		1072		2316	
7	7.1% (1.9 m)	Begonia	155		2220		1117		2248	
8	25.1% (6.7 m)	Dark Turquoise Blue	015		3902		1029		2529	
9	31.6% (8.4 m)	Baja Blue	015		3612		1275		2527	
10	18.1% (4.8 m)	Begonia	155		2220		1117		2248	
11	9.7% (2.6 m)	Mustard	370		0640		1066		2557	

Upper thread 26.6 m
 Bobbin 8.9 m

This documentation was created with Embird 2004 software registered to Shane Reynolds.
 For more information regarding Embird 2004 please visit web site at <http://www.embirdusa.com>.
 Note: These are the closest threads Embird 2004 was able to find. They might differ from the real colors in some cases.



Thread Charts

Thread	Consumption	Name	Brother	Country	Isacord	Polyester	Madeira	Rayon	Robison-Anton	Rayon
1	1.1% (0.5 m)	Scholastic	322		0811		1024			2465
2	1.1% (0.5 m)	Almond Oil	012		0861		1072			2316
3	0.8% (0.3 m)	Scholastic	322		0811		1024			2465
4	0.8% (0.3 m)	Almond Oil	012		0861		1072			2316
5	1.5% (0.6 m)	Scholastic	322		0811		1024			2465
6	0.7% (0.3 m)	Almond Oil	012		0861		1072			2316
7	1.2% (0.5 m)	Scholastic	322		0811		1024			2465
8	1.2% (0.5 m)	Almond Oil	012		0861		1072			2316
9	10.7% (4.5 m)	Baja Blue	015		3612		1275			2527
10	22.8% (9.6 m)	Begonia	155		2220		1117			2248
11	13.7% (5.8 m)	Pale Pink	122		2153		1321			2259
12	37.0% (15.7 m)	Dark Turquoise Blue	015		3902		1029			2529
13	7.6% (3.2 m)	Canary	404		0800		1068			2462

Upper thread 42.3 m
 Bobbin 14.1 m

This documentation was created with Embird 2004 software registered to Shane Reynolds.
 For more information regarding Embird 2004 please visit web site at <http://www.embirdusa.com>.
 Note: These are the closest threads Embird 2004 was able to find. They might differ from the real colors in some cases.



Thread Charts

Thread	Consumption	Name	Brother	Country	Isacord	Polyester	Madeira	Rayon	Robison-Anton	Rayon
1	1.1% (0.5 m)	Scholastic	322		0811		1024			2465
2	1.1% (0.5 m)	Almond Oil	012		0861		1072			2316
3	0.7% (0.3 m)	Scholastic	322		0811		1024			2465
4	0.7% (0.3 m)	Almond Oil	012		0861		1072			2316
5	1.0% (0.4 m)	Scholastic	322		0811		1024			2465
6	1.0% (0.4 m)	Almond Oil	012		0861		1072			2316
7	1.2% (0.5 m)	Scholastic	322		0811		1024			2465
8	1.1% (0.5 m)	Almond Oil	012		0861		1072			2316
9	22.1% (9.3 m)	Dark Red	149		1805		1234			2417
10	16.6% (7.0 m)	Medium Blue	015		3810		1029			2527
11	11.8% (5.0 m)	Purple	635		3335		1266			2437
12	30.6% (12.9 m)	Isle Green	586		4643		1298			2448
13	10.8% (4.6 m)	Canary	404		0800		1068			2462

Upper thread 42.2 m
 Bobbin 14.1 m

This documentation was created with Embird 2004 software registered to Shane Reynolds.
 For more information regarding Embird 2004 please visit web site at <http://www.embirdusa.com>.
 Note: These are the closest threads Embird 2004 was able to found. They might differ from the real colors in some cases.



Thread Charts

Thread	Consumption	Name	Brother	Country	Isacord	Polyester	Madeira Rayon	Robison-Anton	Rayon
1	1.4% (0.5 m)	Scholastic	322		0811		1024		2465
2	2.6% (0.9 m)	Almond Oil	012		0861		1072		2316
3	1.1% (0.4 m)	Scholastic	322		0811		1024		2465
4	2.2% (0.7 m)	Almond Oil	012		0861		1072		2316
5	1.1% (0.4 m)	Scholastic	322		0811		1024		2465
6	1.8% (0.6 m)	Almond Oil	012		0861		1072		2316
7	3.0% (1.0 m)	Begonia	155		2220		1117		2248
8	10.9% (3.7 m)	Dark Turquoise Blue	015		3902		1029		2529
9	28.1% (9.5 m)	Lavender	623		3251		1261		2304
10	32.9% (11.2 m)	Medium Purple	604		2600		1263		2425
11	14.8% (5.0 m)	Canary	404		0800		1068		2462

Upper thread 33.9 m

Bobbin 11.3 m

This documentation was created with Embird 2004 software registered to Shane Reynolds.

For more information regarding Embird 2004 please visit web site at <http://www.embirdusa.com>.

Note: These are the closest threads Embird 2004 was able to found. They might differ from the real colors in some cases.



Thread Charts

Thread	Consumption	Name	Brother	Country	Isacord	Polyester	Madeira Rayon	Robison-Anton	Rayon
1	0.9% (0.3 m)	Scholastic	322		0811		1024		2465
2	0.9% (0.3 m)	Almond Oil	012		0861		1072		2316
3	1.3% (0.5 m)	Scholastic	322		0811		1024		2465
4	1.3% (0.5 m)	Almond Oil	012		0861		1072		2316
5	1.0% (0.4 m)	Scholastic	322		0811		1024		2465
6	1.0% (0.4 m)	Almond Oil	012		0861		1072		2316
7	0.9% (0.3 m)	Scholastic	322		0811		1024		2465
8	0.9% (0.3 m)	Almond Oil	012		0861		1072		2316
9	6.5% (2.5 m)	Isle Green	586		4643		1298		2448
10	29.0% (11.0 m)	Dark Red	149		1805		1234		2417
11	20.3% (7.7 m)	Ultramarine	575		3600		1177		2442
12	26.0% (9.9 m)	Purple	635		3335		1266		2437
13	9.9% (3.8 m)	Almond Oil	012		0861		1072		2316

Upper thread 38.0 m
 Bobbin 12.7 m

This documentation was created with Embird 2004 software registered to Shane Reynolds.
 For more information regarding Embird 2004 please visit web site at <http://www.embirdusa.com>.
 Note: These are the closest threads Embird 2004 was able to found. They might differ from the real colors in some cases.

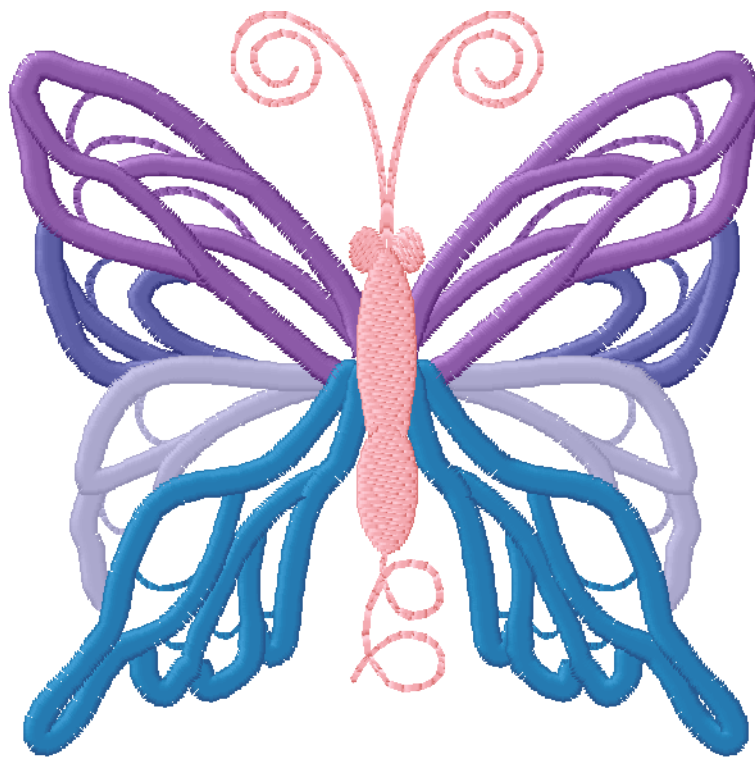


Thread Charts

Thread	Consumption	Name	Brother	Country	Isacord	Polyester	Madeira	Rayon	Robison-Anton	Rayon
1	0.8% (0.4 m)	Scholastic	322		0811		1024			2465
2	0.8% (0.4 m)	Almond Oil	012		0861		1072			2316
3	0.9% (0.4 m)	Scholastic	322		0811		1024			2465
4	0.9% (0.4 m)	Almond Oil	012		0861		1072			2316
5	1.2% (0.6 m)	Scholastic	322		0811		1024			2465
6	1.2% (0.6 m)	Almond Oil	012		0861		1072			2316
7	1.0% (0.5 m)	Scholastic	322		0811		1024			2465
8	1.0% (0.5 m)	Almond Oil	012		0861		1072			2316
9	10.6% (5.0 m)	Baja Blue	015		3612		1275			2527
10	14.2% (6.6 m)	Lavender	623		3251		1261			2304
11	26.9% (12.6 m)	Medium Purple	604		2600		1263			2425
12	31.5% (14.7 m)	Dark Turquoise Blue	015		3902		1029			2529
13	9.0% (4.2 m)	Pink	122		2155		1116			2423

Upper thread 46.7 m
 Bobbin 15.6 m

This documentation was created with Embird 2004 software registered to Shane Reynolds.
 For more information regarding Embird 2004 please visit web site at <http://www.embirdusa.com>.
 Note: These are the closest threads Embird 2004 was able to found. They might differ from the real colors in some cases.

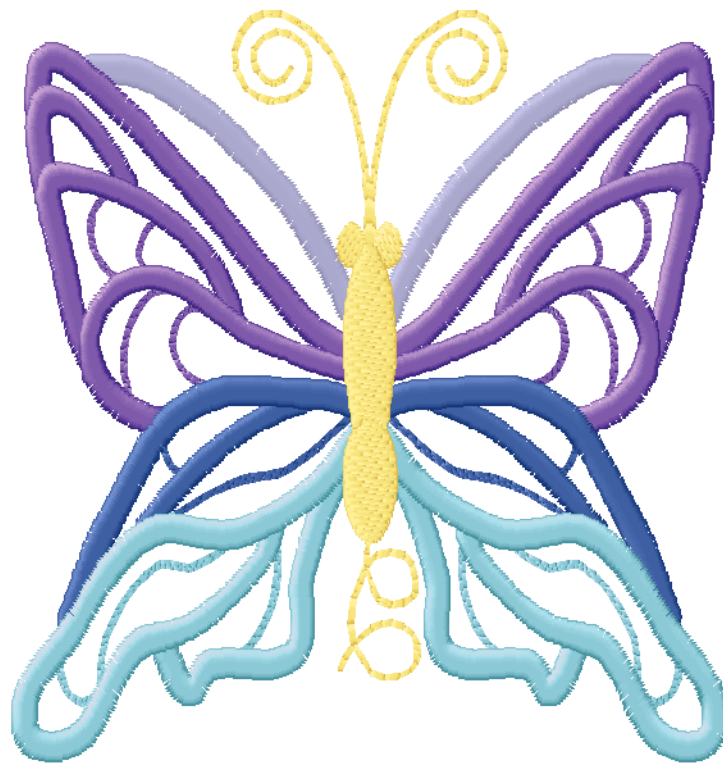


Thread Charts

Thread	Consumption	Name	Brother	Country	Isacord	Polyester	Madeira Rayon	Robison-Anton	Rayon
1	1.0% (0.4 m)	Scholastic	322		0811		1024		2465
2	0.9% (0.4 m)	Almond Oil	012		0861		1072		2316
3	1.3% (0.5 m)	Scholastic	322		0811		1024		2465
4	1.2% (0.5 m)	Almond Oil	012		0861		1072		2316
5	0.9% (0.4 m)	Scholastic	322		0811		1024		2465
6	0.9% (0.4 m)	Almond Oil	012		0861		1072		2316
7	1.3% (0.5 m)	Scholastic	322		0811		1024		2465
8	1.3% (0.5 m)	Almond Oil	012		0861		1072		2316
9	7.9% (3.1 m)	Lavender	623		3251		1261		2304
10	32.4% (12.8 m)	Purple	635		3335		1266		2437
11	13.9% (5.5 m)	Medium Blue	015		3810		1029		2527
12	27.4% (10.8 m)	Baby Blue	512		3910		1074		2300
13	9.6% (3.8 m)	Mustard	370		0640		1066		2557

Upper thread 39.4 m
 Bobbin 13.1 m

This documentation was created with Embird 2004 software registered to Shane Reynolds.
 For more information regarding Embird 2004 please visit web site at <http://www.embirdusa.com>.
 Note: These are the closest threads Embird 2004 was able to find. They might differ from the real colors in some cases.



Thread Charts

Thread	Consumption	Name	Brother	Country	Isacord	Polyester	Madeira	Rayon	Robison-Anton	Rayon
1	0.9% (0.3 m)	Scholastic	322		0811		1024			2465
2	0.8% (0.3 m)	Almond Oil	012		0861		1072			2316
3	0.8% (0.3 m)	Scholastic	322		0811		1024			2465
4	0.8% (0.3 m)	Almond Oil	012		0861		1072			2316
5	1.3% (0.5 m)	Scholastic	322		0811		1024			2465
6	1.2% (0.5 m)	Almond Oil	012		0861		1072			2316
7	1.0% (0.4 m)	Scholastic	322		0811		1024			2465
8	0.9% (0.3 m)	Almond Oil	012		0861		1072			2316
9	11.3% (4.3 m)	Purple	635		3335		1266			2437
10	16.9% (6.4 m)	Dark Red	149		1805		1234			2417
11	32.3% (12.3 m)	Medium Blue	015		3810		1029			2527
12	22.7% (8.6 m)	Isle Green	586		4643		1298			2448
13	9.0% (3.4 m)	Canary	404		0800		1068			2462

Upper thread 37.9 m
 Bobbin 12.6 m

This documentation was created with Embird 2004 software registered to Shane Reynolds.
 For more information regarding Embird 2004 please visit web site at <http://www.embirdusa.com>.
 Note: These are the closest threads Embird 2004 was able to found. They might differ from the real colors in some cases.



Thread Charts

Thread	Consumption	Name	Brother	Country	Isacord	Polyester	Madeira Rayon	Robison-Anton	Rayon
1	1.4% (0.5 m)	Scholastic	322		0811		1024		2465
2	1.4% (0.4 m)	Almond Oil	012		0861		1072		2316
3	1.3% (0.4 m)	Scholastic	322		0811		1024		2465
4	1.2% (0.4 m)	Almond Oil	012		0861		1072		2316
5	1.2% (0.4 m)	Scholastic	322		0811		1024		2465
6	1.2% (0.4 m)	Almond Oil	012		0861		1072		2316
7	30.1% (9.4 m)	Lavender	623		3251		1261		2304
8	22.0% (6.9 m)	Ultramarine	575		3600		1177		2442
9	28.1% (8.8 m)	Dark Turquoise Blue	015		3902		1029		2529
10	12.1% (3.8 m)	Canary	404		0800		1068		2462

Upper thread 31.2 m
 Bobbin 10.4 m

This documentation was created with Embird 2004 software registered to Shane Reynolds.
 For more information regarding Embird 2004 please visit web site at <http://www.embirdusa.com>.
 Note: These are the closest threads Embird 2004 was able to find. They might differ from the real colors in some cases.



Thread Charts

Thread	Consumption	Name	Brother	Country	Isacord	Polyester	Madeira Rayon	Robison-Anton	Rayon
1	1.3% (0.4 m)	Scholastic	322		0811		1024		2465
2	1.3% (0.4 m)	Almond Oil	012		0861		1072		2316
3	1.3% (0.4 m)	Scholastic	322		0811		1024		2465
4	1.2% (0.4 m)	Almond Oil	012		0861		1072		2316
5	1.3% (0.4 m)	Scholastic	322		0811		1024		2465
6	1.3% (0.4 m)	Almond Oil	012		0861		1072		2316
7	26.3% (7.7 m)	Baja Blue	015		3612		1275		2527
8	23.3% (6.8 m)	Ultramarine	575		3600		1177		2442
9	29.9% (8.8 m)	Dark Turquoise Blue	015		3902		1029		2529
10	12.8% (3.8 m)	Canary	404		0800		1068		2462

Upper thread 29.4 m
 Bobbin 9.8 m

This documentation was created with Embird 2004 software registered to Shane Reynolds.
 For more information regarding Embird 2004 please visit web site at <http://www.embirdusa.com>.
 Note: These are the closest threads Embird 2004 was able to find. They might differ from the real colors in some cases.



Thread Charts

Thread	Consumption	Name	Brother	Country	Isacord	Polyester	Madeira Rayo	Robison-Anton	Rayon
1	1.2% (0.3 m)	Scholastic	322		0811		1024		2465
2	1.2% (0.3 m)	Almond Oil	012		0861		1072		2316
3	1.2% (0.3 m)	Scholastic	322		0811		1024		2465
4	1.2% (0.3 m)	Almond Oil	012		0861		1072		2316
5	1.3% (0.3 m)	Scholastic	322		0811		1024		2465
6	1.3% (0.3 m)	Almond Oil	012		0861		1072		2316
7	27.5% (6.3 m)	Baja Blue	015		3612		1275		2527
8	23.8% (5.4 m)	Ultramarine	575		3600		1177		2442
9	30.3% (6.9 m)	Dark Turquoise Blue	015		3902		1029		2529
10	10.9% (2.5 m)	Almond Oil	012		0861		1072		2316

Upper thread 22.8 m
 Bobbin 7.6 m

This documentation was created with Embird 2004 software registered to Shane Reynolds.
 For more information regarding Embird 2004 please visit web site at <http://www.embirdusa.com>.
 Note: These are the closest threads Embird 2004 was able to found. They might differ from the real colors in some cases.

