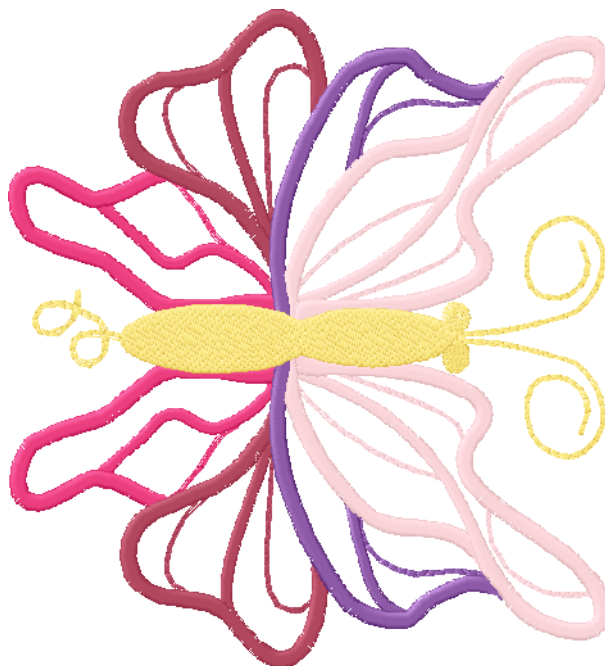


Thread Charts

Thread	Consumption	Name	Brother	Country	Isacord	Polyester	Madeira	Rayon	Robison-Anton	Rayon
1	0.8% (0.6 m)	Scholastic		322		0811		1024		2465
2	0.7% (0.6 m)	Almond Oil		012		0861		1072		2316
3	1.0% (0.8 m)	Scholastic		322		0811		1024		2465
4	0.9% (0.7 m)	Almond Oil		012		0861		1072		2316
5	0.9% (0.7 m)	Scholastic		322		0811		1024		2465
6	0.9% (0.7 m)	Almond Oil		012		0861		1072		2316
7	1.1% (0.9 m)	Scholastic		322		0811		1024		2465
8	1.1% (0.9 m)	Almond Oil		012		0861		1072		2316
9	15.6% (12.4 m)	Begonia		155		2220		1117		2248
10	17.2% (13.6 m)	Baroque Rose		212		1921		1341		2480
11	13.9% (11.0 m)	Medium Purple		604		2600		1263		2425
12	29.8% (23.5 m)	Delicate Mauve		000		2170		1013		2335
13	16.0% (12.7 m)	Mustard		370		0640		1066		2557

Upper thread 79.1 m
 Bobbin 26.4 m

This documentation was created with Embird 2004 software registered to Shane Reynolds.
 For more information regarding Embird 2004 please visit web site at <http://www.embirdusa.com>.
 Note: These are the closest threads Embird 2004 was able to found. They might differ from the real colors in some cases.

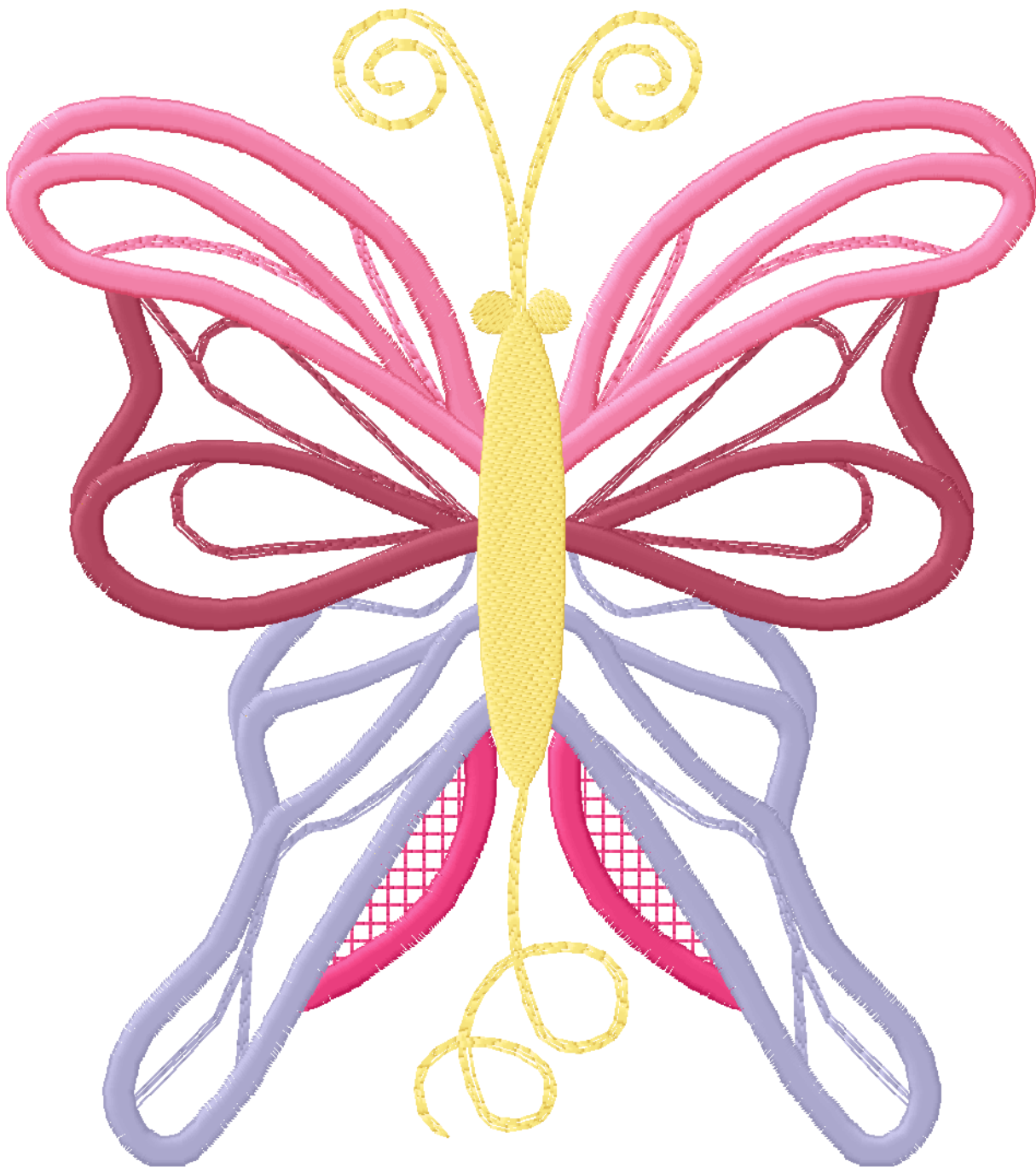


Thread Charts

Thread	Consumption	Name	Brother	Country	Isacord	Polyester	Madeira Rayon	Robison-Anton	Rayon
1	1.0% (0.8 m)	Scholastic	322		0811		1024		2465
2	1.0% (0.8 m)	Almond Oil	012		0861		1072		2316
3	0.9% (0.7 m)	Scholastic	322		0811		1024		2465
4	0.8% (0.6 m)	Almond Oil	012		0861		1072		2316
5	0.9% (0.7 m)	Scholastic	322		0811		1024		2465
6	0.9% (0.7 m)	Almond Oil	012		0861		1072		2316
7	8.2% (6.3 m)	Begonia	155		2220		1117		2248
8	27.8% (21.5 m)	Lavender	623		3251		1261		2304
9	19.6% (15.1 m)	Baroque Rose	212		1921		1341		2480
10	26.6% (20.6 m)	Pale Pink	122		2153		1321		2259
11	12.3% (9.5 m)	Mustard	370		0640		1066		2557

Upper thread 77.2 m
 Bobbin 25.7 m

This documentation was created with Embird 2004 software registered to Shane Reynolds.
 For more information regarding Embird 2004 please visit web site at <http://www.embirdusa.com>.
 Note: These are the closest threads Embird 2004 was able to found. They might differ from the real colors in some cases.

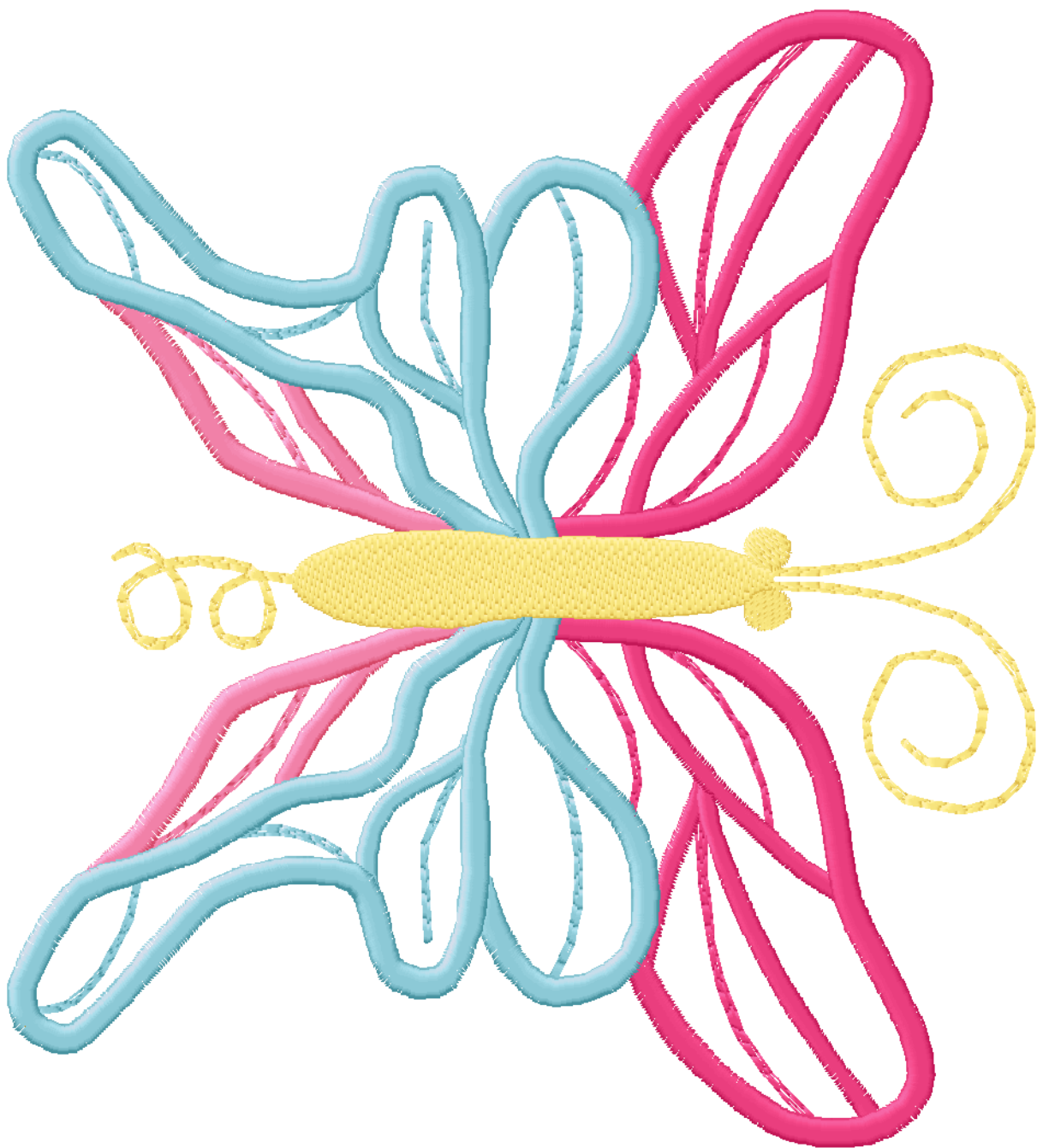


Thread Charts

Thread	Consumption	Name	Brother	Country	Isacord	Polyester	Madeira Rayon	Robison-Anton	Rayon
1	0.8% (0.6 m)	Scholastic	322		0811		1024		2465
2	0.8% (0.5 m)	Almond Oil	012		0861		1072		2316
3	1.1% (0.8 m)	Scholastic	322		0811		1024		2465
4	1.1% (0.8 m)	Almond Oil	012		0861		1072		2316
5	1.5% (1.1 m)	Scholastic	322		0811		1024		2465
6	1.5% (1.1 m)	Almond Oil	012		0861		1072		2316
7	10.0% (6.9 m)	Pale Pink	122		2153		1321		2259
8	28.6% (19.9 m)	Begonia	155		2220		1117		2248
9	40.2% (28.1 m)	Baby Blue	512		3910		1074		2300
10	14.4% (10.0 m)	Mustard	370		0640		1066		2557

Upper thread 69.8 m
 Bobbin 23.3 m

This documentation was created with Embird 2004 software registered to Shane Reynolds.
 For more information regarding Embird 2004 please visit web site at <http://www.embirdusa.com>.
 Note: These are the closest threads Embird 2004 was able to found. They might differ from the real colors in some cases.

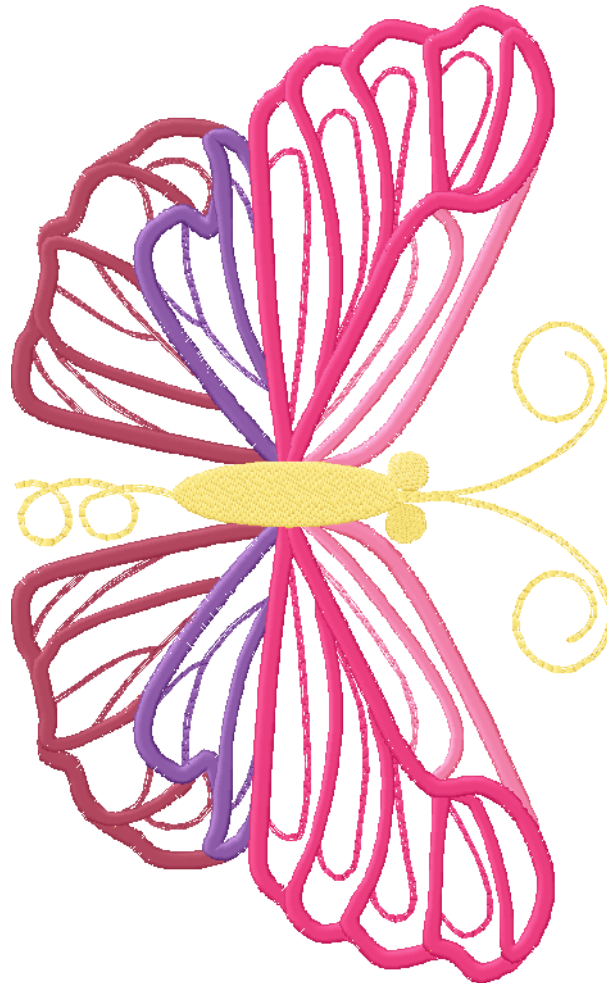


Thread Charts

Thread	Consumption	Name	Brother	Country	Isacord	Polyester	Madeira	Rayon	Robison-Anton	Rayon
1	0.9% (1.0 m)	Scholastic	322		0811		1024			2465
2	0.9% (1.0 m)	Almond Oil	012		0861		1072			2316
3	0.7% (0.8 m)	Scholastic	322		0811		1024			2465
4	0.7% (0.8 m)	Almond Oil	012		0861		1072			2316
5	1.2% (1.4 m)	Scholastic	322		0811		1024			2465
6	0.6% (0.7 m)	Almond Oil	012		0861		1072			2316
7	1.0% (1.1 m)	Scholastic	322		0811		1024			2465
8	1.0% (1.1 m)	Almond Oil	012		0861		1072			2316
9	11.0% (12.7 m)	Pale Pink	122		2153		1321			2259
10	20.8% (23.9 m)	Baroque Rose	212		1921		1341			2480
11	13.6% (15.7 m)	Medium Purple	604		2600		1263			2425
12	38.0% (43.7 m)	Begonia	155		2220		1117			2248
13	9.6% (11.0 m)	Mustard	370		0640		1066			2557

Upper thread 115.0 m
 Bobbin 38.3 m

This documentation was created with Embird 2004 software registered to Shane Reynolds.
 For more information regarding Embird 2004 please visit web site at <http://www.embirdusa.com>.
 Note: These are the closest threads Embird 2004 was able to found. They might differ from the real colors in some cases.

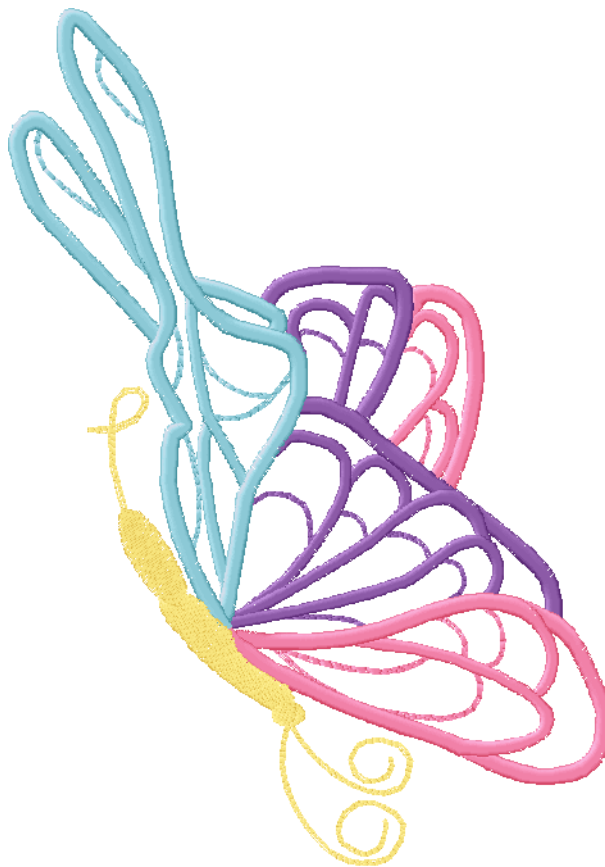


Thread Charts

Thread	Consumption	Name	Brother	Country	Isacord	Polyester	Madeira Rayon	Robison-Anton	Rayon
1	1.3% (0.9 m)	Scholastic	322		0811		1024		2465
2	1.2% (0.8 m)	Almond Oil	012		0861		1072		2316
3	0.9% (0.6 m)	Scholastic	322		0811		1024		2465
4	0.9% (0.6 m)	Almond Oil	012		0861		1072		2316
5	1.2% (0.8 m)	Scholastic	322		0811		1024		2465
6	1.1% (0.8 m)	Almond Oil	012		0861		1072		2316
7	7.1% (4.8 m)	Pale Pink	122		2153		1321		2259
8	24.1% (16.4 m)	Medium Purple	604		2600		1263		2425
9	33.6% (22.9 m)	Baby Blue	512		3910		1074		2300
10	18.0% (12.3 m)	Pale Pink	122		2153		1321		2259
11	10.8% (7.3 m)	Mustard	370		0640		1066		2557

Upper thread 68.1 m
 Bobbin 22.7 m

This documentation was created with Embird 2004 software registered to Shane Reynolds.
 For more information regarding Embird 2004 please visit web site at <http://www.embirdusa.com>.
 Note: These are the closest threads Embird 2004 was able to found. They might differ from the real colors in some cases.

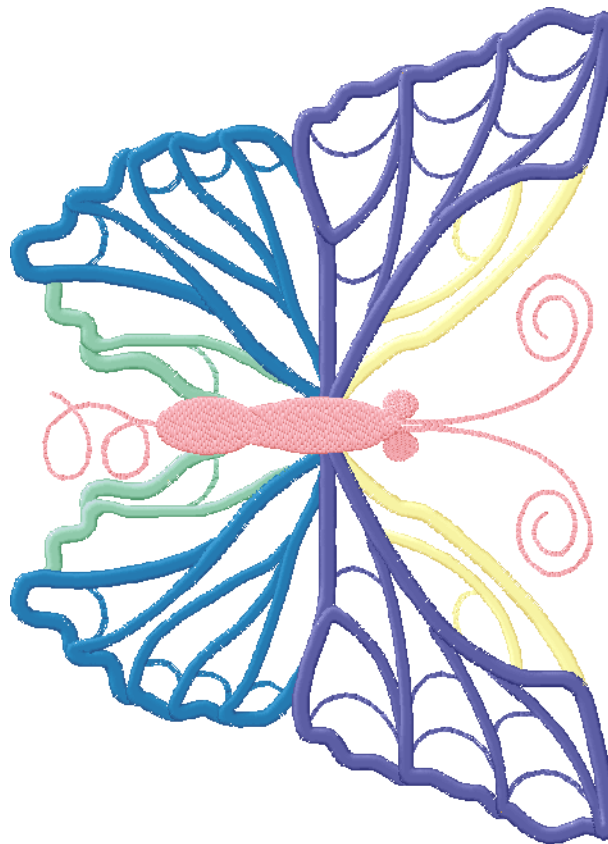


Thread Charts

Thread	Consumption	Name	Brother	Country	Isacord	Polyester	Madeira Rayon	Robison-Anton	Rayon
1	0.7% (0.7 m)	Scholastic	322		0811		1024		2465
2	0.7% (0.7 m)	Almond Oil	012		0861		1072		2316
3	0.6% (0.6 m)	Scholastic	322		0811		1024		2465
4	0.6% (0.6 m)	Almond Oil	012		0861		1072		2316
5	0.9% (0.9 m)	Scholastic	322		0811		1024		2465
6	0.9% (0.9 m)	Almond Oil	012		0861		1072		2316
7	1.1% (1.1 m)	Scholastic	322		0811		1024		2465
8	1.1% (1.1 m)	Almond Oil	012		0861		1072		2316
9	9.5% (9.3 m)	Cream Brown	331		0520		1349		2559
10	8.8% (8.6 m)	Brook Green	512		3910		1047		2238
11	28.5% (27.9 m)	Dark Turquoise Blue	015		3902		1029		2529
12	36.1% (35.3 m)	Baja Blue	015		3612		1275		2527
13	10.5% (10.3 m)	Pink	122		2155		1116		2423

Upper thread 97.8 m
 Bobbin 32.6 m

This documentation was created with Embird 2004 software registered to Shane Reynolds.
 For more information regarding Embird 2004 please visit web site at <http://www.embirdusa.com>.
 Note: These are the closest threads Embird 2004 was able to found. They might differ from the real colors in some cases.

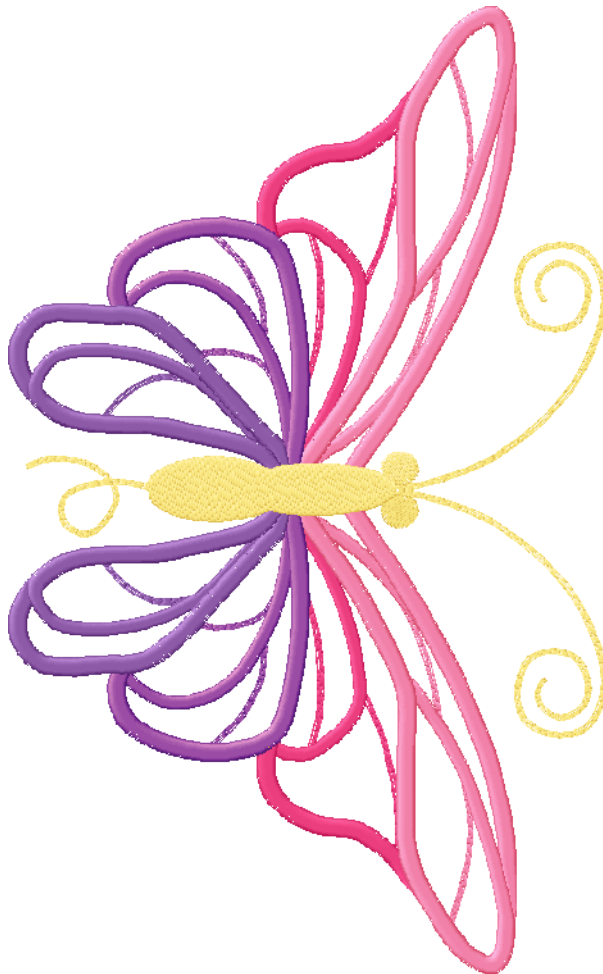


Thread Charts

Thread	Consumption	Name	Brother	Country	Isacord	Polyester	Madeira Rayon	Robison-Anton	Rayon
1	0.9% (0.8 m)	Scholastic	322		0811		1024		2465
2	0.9% (0.8 m)	Almond Oil	012		0861		1072		2316
3	0.8% (0.7 m)	Scholastic	322		0811		1024		2465
4	0.7% (0.6 m)	Almond Oil	012		0861		1072		2316
5	1.1% (1.0 m)	Scholastic	322		0811		1024		2465
6	1.1% (0.9 m)	Almond Oil	012		0861		1072		2316
7	0.8% (0.7 m)	Scholastic	322		0811		1024		2465
8	0.7% (0.6 m)	Almond Oil	012		0861		1072		2316
9	12.1% (10.5 m)	Begonia	155		2220		1117		2248
10	30.9% (26.8 m)	Pale Pink	122		2153		1321		2259
11	16.4% (14.2 m)	Dark Purple	635		3541		1033		2380
12	20.9% (18.1 m)	Medium Purple	604		2600		1263		2425
13	12.7% (11.0 m)	Mustard	370		0640		1066		2557

Upper thread 86.5 m
 Bobbin 28.8 m

This documentation was created with Embird 2004 software registered to Shane Reynolds.
 For more information regarding Embird 2004 please visit web site at <http://www.embirdusa.com>.
 Note: These are the closest threads Embird 2004 was able to find. They might differ from the real colors in some cases.

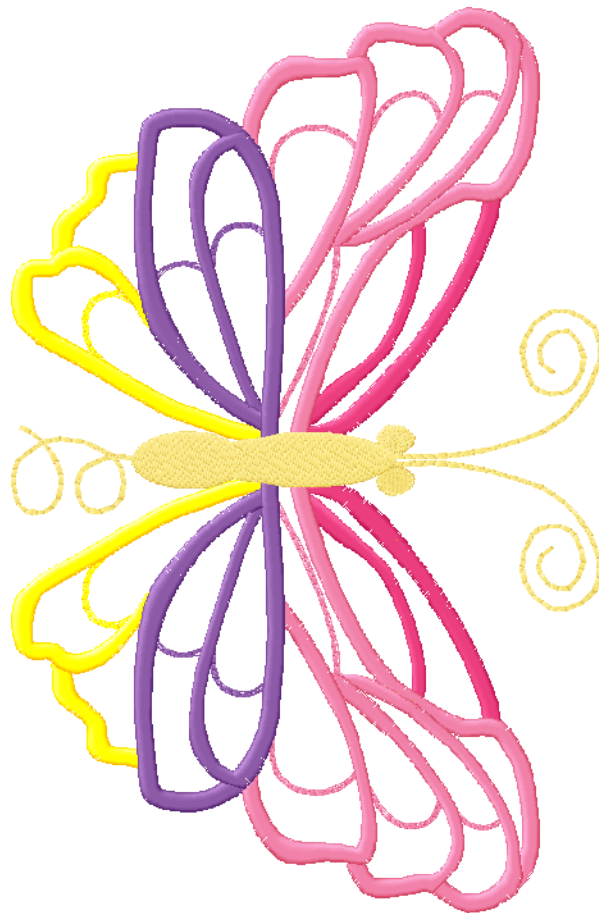


Thread Charts

Thread	Consumption	Name	Brother	Country	Isacord	Polyester	Madeira	Rayon	Robison-Anton	Rayon
1	0.7% (0.6 m)	Scholastic	322		0811		1024		2465	
2	0.7% (0.6 m)	Almond Oil	012		0861		1072		2316	
3	1.1% (1.1 m)	Scholastic	322		0811		1024		2465	
4	1.1% (1.1 m)	Almond Oil	012		0861		1072		2316	
5	0.8% (0.8 m)	Scholastic	322		0811		1024		2465	
6	0.8% (0.8 m)	Almond Oil	012		0861		1072		2316	
7	0.8% (0.7 m)	Scholastic	322		0811		1024		2465	
8	0.8% (0.7 m)	Almond Oil	012		0861		1072		2316	
9	10.5% (10.0 m)	Begonia	155		2220		1117		2248	
10	34.5% (33.0 m)	Pale Pink	122		2153		1321		2259	
11	14.5% (13.9 m)	Gold/Yellow	043		0501		1267		2326	
12	22.3% (21.4 m)	Medium Purple	604		2600		1263		2425	
13	11.4% (10.9 m)	Mustard	370		0640		1066		2557	

Upper thread 95.6 m
 Bobbin 31.9 m

This documentation was created with Embird 2004 software registered to Shane Reynolds.
 For more information regarding Embird 2004 please visit web site at <http://www.embirdusa.com>.
 Note: These are the closest threads Embird 2004 was able to find. They might differ from the real colors in some cases.

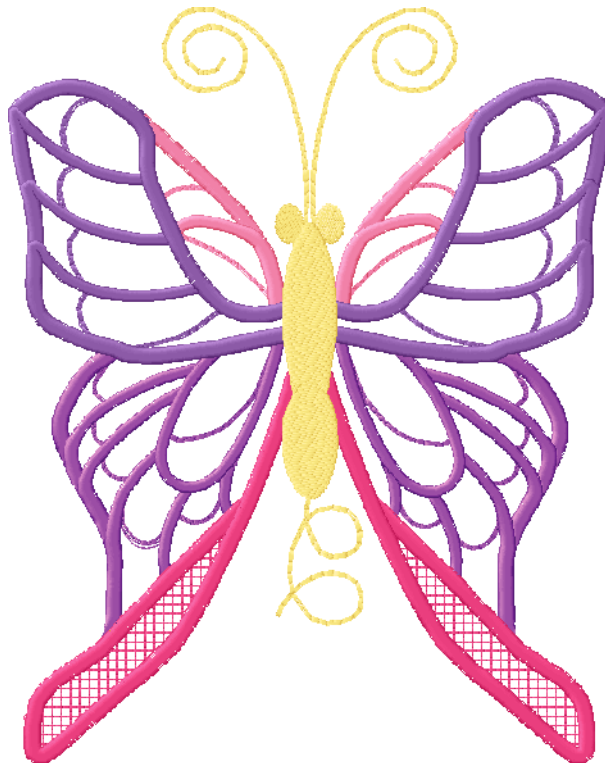


Thread Charts

Thread	Consumption	Name	Brother	Country	Isacord	Polyester	Madeira Rayon	Robison-Anton	Rayon
1	0.6% (0.5 m)	Scholastic	322		0811		1024		2465
2	0.6% (0.5 m)	Almond Oil	012		0861		1072		2316
3	1.0% (0.8 m)	Scholastic	322		0811		1024		2465
4	1.0% (0.8 m)	Almond Oil	012		0861		1072		2316
5	0.9% (0.8 m)	Scholastic	322		0811		1024		2465
6	0.9% (0.8 m)	Almond Oil	012		0861		1072		2316
7	7.1% (6.2 m)	Pale Pink	122		2153		1321		2259
8	24.1% (21.0 m)	Dark Purple	635		3541		1033		2380
9	28.9% (25.2 m)	Medium Purple	604		2600		1263		2425
10	22.3% (19.4 m)	Begonia	155		2220		1117		2248
11	12.7% (11.1 m)	Mustard	370		0640		1066		2557

Upper thread 87.3 m
 Bobbin 29.1 m

This documentation was created with Embird 2004 software registered to Shane Reynolds.
 For more information regarding Embird 2004 please visit web site at <http://www.embirdusa.com>.
 Note: These are the closest threads Embird 2004 was able to found. They might differ from the real colors in some cases.

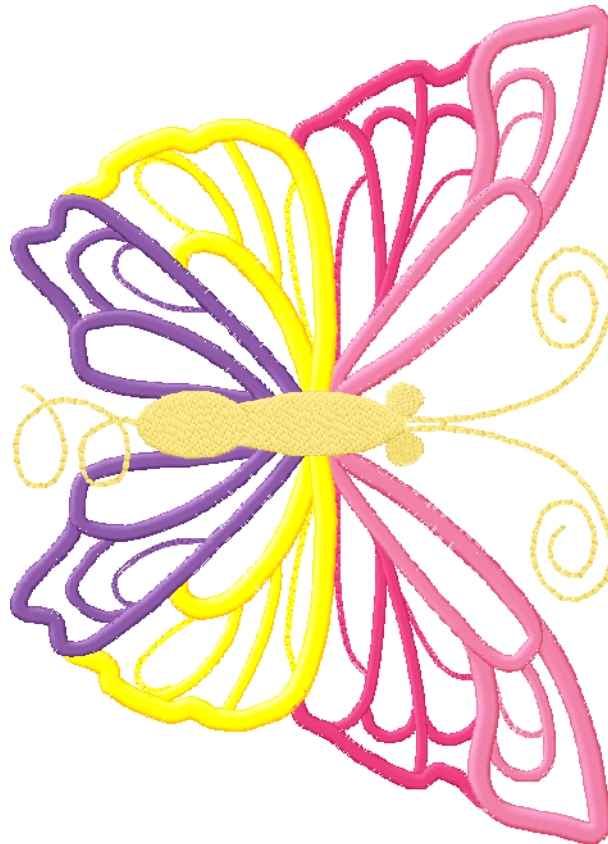


Thread Charts

Thread	Consumption	Name	Brother	Country	Isacord	Polyester	Madeira	Rayon	Robison-Anton	Rayon
1	0.9% (1.0 m)	Scholastic	322		0811		1024		2465	
2	0.9% (0.9 m)	Almond Oil	012		0861		1072		2316	
3	0.8% (0.8 m)	Scholastic	322		0811		1024		2465	
4	0.8% (0.8 m)	Almond Oil	012		0861		1072		2316	
5	0.7% (0.8 m)	Scholastic	322		0811		1024		2465	
6	0.7% (0.8 m)	Almond Oil	012		0861		1072		2316	
7	0.7% (0.7 m)	Scholastic	322		0811		1024		2465	
8	0.7% (0.7 m)	Almond Oil	012		0861		1072		2316	
9	13.2% (13.9 m)	Begonia	155		2220		1117		2248	
10	26.7% (28.0 m)	Pale Pink	122		2153		1321		2259	
11	23.2% (24.3 m)	Gold/Yellow	043		0501		1267		2326	
12	18.8% (19.7 m)	Medium Purple	604		2600		1263		2425	
13	11.9% (12.5 m)	Mustard	370		0640		1066		2557	

Upper thread 105.0 m
 Bobbin 35.0 m

This documentation was created with Embird 2004 software registered to Shane Reynolds.
 For more information regarding Embird 2004 please visit web site at <http://www.embirdusa.com>.
 Note: These are the closest threads Embird 2004 was able to find. They might differ from the real colors in some cases.

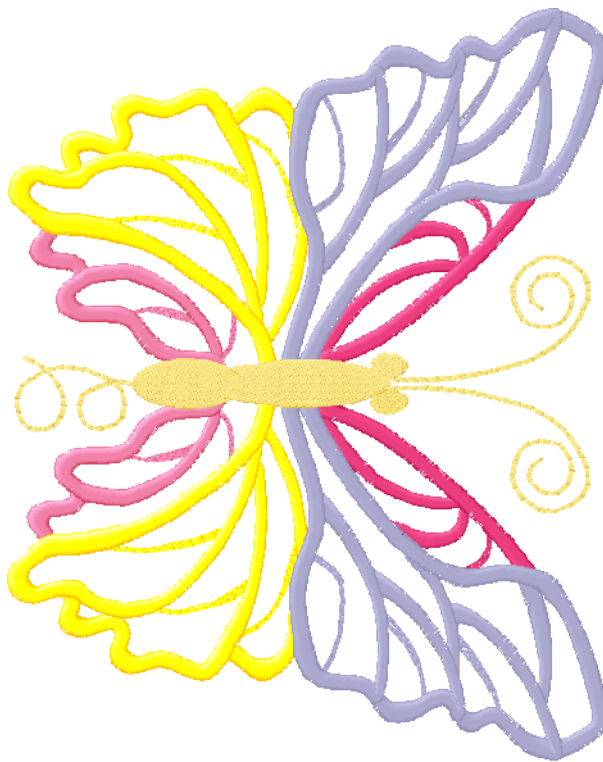


Thread Charts

Thread	Consumption	Name	Brother	Country	Isacord	Polyester	Madeira	Rayon	Robison-Anton	Rayon
1	0.6% (0.6 m)	Scholastic	322		0811		1024		2465	
2	0.6% (0.6 m)	Almond Oil	012		0861		1072		2316	
3	0.6% (0.6 m)	Scholastic	322		0811		1024		2465	
4	0.5% (0.5 m)	Almond Oil	012		0861		1072		2316	
5	0.9% (0.9 m)	Scholastic	322		0811		1024		2465	
6	0.9% (0.9 m)	Almond Oil	012		0861		1072		2316	
7	1.0% (1.0 m)	Scholastic	322		0811		1024		2465	
8	1.0% (1.0 m)	Almond Oil	012		0861		1072		2316	
9	9.2% (9.2 m)	Begonia	155		2220		1117		2248	
10	9.9% (9.8 m)	Pale Pink	122		2153		1321		2259	
11	26.9% (26.7 m)	Gold/Yellow	043		0501		1267		2326	
12	37.4% (37.1 m)	Lavender	623		3251		1261		2304	
13	10.5% (10.4 m)	Mustard	370		0640		1066		2557	

Upper thread 99.2 m
 Bobbin 33.1 m

This documentation was created with Embird 2004 software registered to Shane Reynolds.
 For more information regarding Embird 2004 please visit web site at <http://www.embirdusa.com>.
 Note: These are the closest threads Embird 2004 was able to find. They might differ from the real colors in some cases.

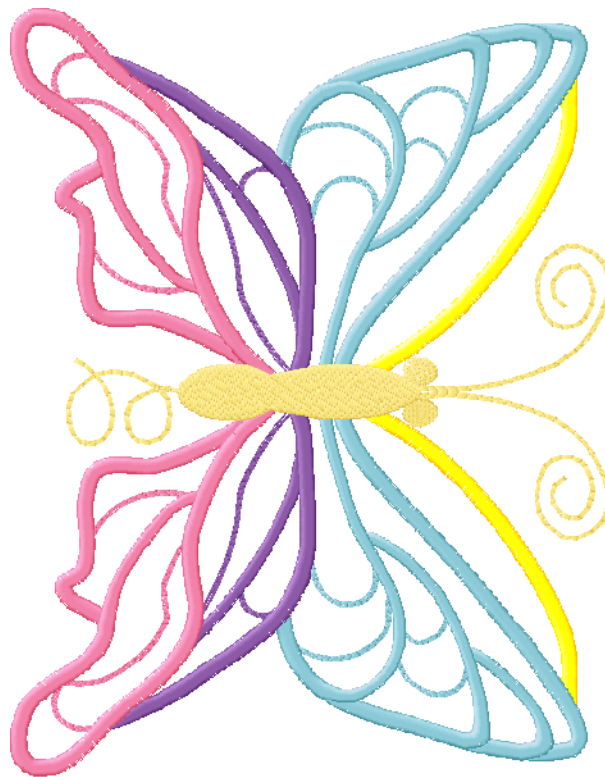


Thread Charts

Thread	Consumption	Name	Brother	Country	Isacord	Polyester	Madeira Rayon	Robison-Anton	Rayon
1	0.9% (0.7 m)	Scholastic	322		0811		1024		2465
2	0.8% (0.7 m)	Almond Oil	012		0861		1072		2316
3	1.1% (0.9 m)	Scholastic	322		0811		1024		2465
4	1.1% (0.9 m)	Almond Oil	012		0861		1072		2316
5	0.9% (0.7 m)	Scholastic	322		0811		1024		2465
6	0.9% (0.7 m)	Almond Oil	012		0861		1072		2316
7	1.1% (1.0 m)	Scholastic	322		0811		1024		2465
8	1.1% (0.9 m)	Almond Oil	012		0861		1072		2316
9	8.2% (7.0 m)	Gold/Yellow	043		0501		1267		2326
10	31.3% (26.4 m)	Baby Blue	512		3910		1074		2300
11	13.6% (11.5 m)	Medium Purple	604		2600		1263		2425
12	27.1% (22.8 m)	Pale Pink	122		2153		1321		2259
13	11.9% (10.0 m)	Mustard	370		0640		1066		2557

Upper thread 84.4 m
 Bobbin 28.1 m

This documentation was created with Embird 2004 software registered to Shane Reynolds.
 For more information regarding Embird 2004 please visit web site at <http://www.embirdusa.com>.
 Note: These are the closest threads Embird 2004 was able to found. They might differ from the real colors in some cases.



Thread Charts

Thread	Consumption	Name	Brother	Country	Isacord	Polyester	Madeira	Rayon	Robison-Anton	Rayon
1	0.7% (0.7 m)	Scholastic	322		0811		1024		2465	
2	0.7% (0.7 m)	Almond Oil	012		0861		1072		2316	
3	1.0% (1.1 m)	Scholastic	322		0811		1024		2465	
4	1.0% (1.0 m)	Almond Oil	012		0861		1072		2316	
5	0.8% (0.8 m)	Scholastic	322		0811		1024		2465	
6	0.7% (0.8 m)	Almond Oil	012		0861		1072		2316	
7	0.7% (0.7 m)	Scholastic	322		0811		1024		2465	
8	0.7% (0.7 m)	Almond Oil	012		0861		1072		2316	
9	11.8% (12.4 m)	Medium Purple	604		2600		1263		2425	
10	15.4% (16.2 m)	Baby Blue	512		3910		1074		2300	
11	21.8% (22.9 m)	Gold/Yellow	043		0501		1267		2326	
12	33.5% (35.2 m)	Pale Pink	122		2153		1321		2259	
13	11.2% (11.8 m)	Mustard	370		0640		1066		2557	

Upper thread 105.1 m
 Bobbin 35.0 m

This documentation was created with Embird 2004 software registered to Shane Reynolds.
 For more information regarding Embird 2004 please visit web site at <http://www.embirdusa.com>.
 Note: These are the closest threads Embird 2004 was able to find. They might differ from the real colors in some cases.



Thread Charts

Thread	Consumption	Name	Brother	Country	Isacord	Polyester	Madeira Rayon	Robison-Anton	Rayon
1	1.2% (1.0 m)	Scholastic	322		0811		1024		2465
2	1.2% (1.0 m)	Almond Oil	012		0861		1072		2316
3	0.8% (0.7 m)	Scholastic	322		0811		1024		2465
4	0.8% (0.7 m)	Almond Oil	012		0861		1072		2316
5	1.0% (0.8 m)	Scholastic	322		0811		1024		2465
6	1.0% (0.8 m)	Almond Oil	012		0861		1072		2316
7	25.3% (21.7 m)	Pale Pink	122		2153		1321		2259
8	19.5% (16.7 m)	Medium Purple	604		2600		1263		2425
9	35.3% (30.3 m)	Dark Purple	635		3541		1033		2380
10	14.0% (12.0 m)	Mustard	370		0640		1066		2557

Upper thread 85.6 m
Bobbin 28.5 m

This documentation was created with Embird 2004 software registered to Shane Reynolds.
For more information regarding Embird 2004 please visit web site at <http://www.embirdusa.com>.
Note: These are the closest threads Embird 2004 was able to find. They might differ from the real colors in some cases.

