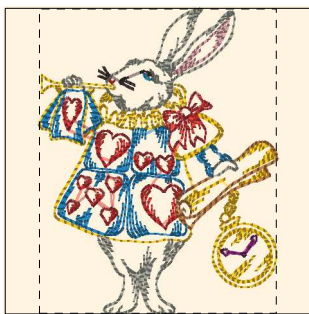


Printed 4/16/2010



- 1. Goldenrod (Sul-R:1024)
- 2. Blackberry (Sul-R:1215)
- 3. Poppy (Sul-R:1317)
- 4. Rust (Sul-R:1181)
- 5. Tan (Sul-R:1126)
- 6. Fuchsia (Sul-R:1192)
- 7. Putty (Sul-R:1508)
- 8. Taupe (Sul-R:1213)
- 9. (Sul-R:1290)
- 10. Duck Wing Blue (Sul-R:1250)

Alice_01-4x4.dst

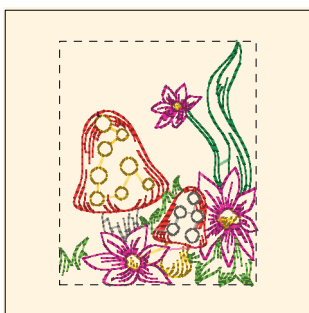
3.06x3.92 inches; 8,473 stitches
10 thread changes; 10 colors



- 1. Goldenrod (Sul-R:1024)
- 2. Blackberry (Sul-R:1215)
- 3. Poppy (Sul-R:1317)
- 4. Med. Dk. Khaki (Sul-R:1040)
- 5. Fuchsia (Sul-R:1192)
- 6. Putty (Sul-R:1508)
- 7. Med. Dk. Ecru (Sul-R:1054)
- 8. (Sul-R:1290)
- 9. Med. Blue (Sul-R:1029)
- 10. Duck Wing Blue (Sul-R:1250)

Alice_02-4x4.dst

2.59x3.91 inches; 6,028 stitches
10 thread changes; 10 colors



- 1. Goldenrod (Sul-R:1024)
- 2. Poppy (Sul-R:1317)
- 3. Garden Green (Sul-R:569)
- 4. Fuchsia (Sul-R:1192)
- 5. Med. Rose (Sul-R:1231)
- 6. Putty (Sul-R:1508)
- 7. Nile Green (Sul-R:1274)

Alice_03-4x4.dst

2.53x3.14 inches; 7,985 stitches
7 thread changes; 7 colors



- 1. Goldenrod (Sul-R:1024)
- 2. Poppy (Sul-R:1317)
- 3. Rust (Sul-R:1181)
- 4. Grass Green (Sul-R:1049)
- 5. Nile Green (Sul-R:1274)
- 6. Xmas Green (Sul-R:1051)
- 7. Toast (Sul-R:1266)
- 8. Med. Dk. Khaki (Sul-R:1040)
- 9. Gray (Sul-R:1219)
- 10. Fuchsia (Sul-R:1192)
- 11. Putty (Sul-R:1508)
- 12. Med. Dk. Ecru (Sul-R:1054)
- 13. Steel Gray (Sul-R:1011)
- 14. Med. Blue (Sul-R:1029)
- 15. Duck Wing Blue (Sul-R:1250)
- 16. Baby Blue Tint (Sul-R:1223)
- 17. Blackberry (Sul-R:1215)

Alice_04-4x4.dst

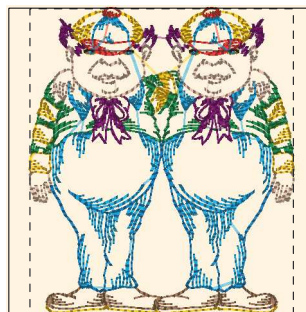
3.34x3.92 inches; 8,047 stitches
17 thread changes; 17 colors



- 1. Goldenrod (Sul-R:1024)
- 2. Poppy (Sul-R:1317)
- 3. Garden Green (Sul-R:569)
- 4. Med. Dk. Khaki (Sul-R:1040)
- 5. Fuchsia (Sul-R:1192)
- 6. Med. Rose (Sul-R:1231)
- 7. Med. Dk. Ecru (Sul-R:1054)
- 8. Med. Blue (Sul-R:1029)
- 9. Duck Wing Blue (Sul-R:1250)
- 10. Nile Green (Sul-R:1274)
- 11. Blackberry (Sul-R:1215)

Alice_05-4x4.dst

2.54x3.92 inches; 8,783 stitches
11 thread changes; 11 colors



- 1. Goldenrod (Sul-R:1024)
- 2. Poppy (Sul-R:1317)
- 3. Garden Green (Sul-R:569)
- 4. Toast (Sul-R:1266)
- 5. Fuchsia (Sul-R:1192)
- 6. Med. Dk. Ecru (Sul-R:1054)
- 7. (Sul-R:1290)
- 8. Duck Wing Blue (Sul-R:1250)
- 9. Blackberry (Sul-R:1215)

Alice_06-4x4.dst

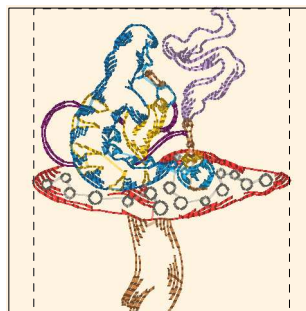
3.39x3.92 inches; 10,998 stitches
9 thread changes; 9 colors



- 1. Goldenrod (Sul-R:1024)
- 2. Mimosa Yellow (Sul-R:1187)
- 3. (Sul-R:1244)
- 4. Sunflower Gold (Sul-R:1333)
- 5. Poppy (Sul-R:1317)
- 6. Rust (Sul-R:1181)
- 7. Grass Green (Sul-R:1049)
- 8. Tan (Sul-R:1126)
- 9. Toast (Sul-R:1266)
- 10. Fuchsia (Sul-R:1192)
- 11. Putty (Sul-R:1508)
- 12. Med. Dk. Ecru (Sul-R:1054)
- 13. (Sul-R:1290)
- 14. Duck Wing Blue (Sul-R:1250)
- 15. Blackberry (Sul-R:1215)

Alice_07-4x4.dst

3.92x3.84 inches; 11,814 stitches
15 thread changes; 15 colors



- 1. Goldenrod (Sul-R:1024)
- 2. Poppy (Sul-R:1317)
- 3. Tan (Sul-R:1126)
- 4. Fuchsia (Sul-R:1192)
- 5. Putty (Sul-R:1508)
- 6. (Sul-R:1290)
- 7. Hyacinth (Sul-R:1296)
- 8. Duck Wing Blue (Sul-R:1250)

Alice_08-4x4.dst

3.30x3.92 inches; 6,457 stitches
8 thread changes; 8 colors

Printed 4/16/2010



- 1. Goldenrod (Sul-R:1024)
- 2. Poppy (Sul-R:1317)
- 3. Nile Green (Sul-R:1274)
- 4. Garden Green (Sul-R:569)
- 5. Gray (Sul-R:1219)
- 6. Fuchsia (Sul-R:1192)
- 7. Med. Rose (Sul-R:1231)
- 8. Putty (Sul-R:1508)
- 9. Med. Dk. Ecru (Sul-R:1054)
- 10. Med. Blue (Sul-R:1029)
- 11. Duck Wing Blue (Sul-R:1250)
- 12. Blackberry (Sul-R:1215)

Alice_09-4x4.dst

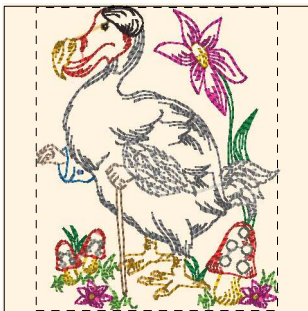
2.16x3.92 inches; 5,718 stitches
12 thread changes; 12 colors



- 1. Goldenrod (Sul-R:1024)
- 2. Poppy (Sul-R:1317)
- 3. Tan (Sul-R:1126)
- 4. Med. Dk. Khaki (Sul-R:1040)
- 5. Gray (Sul-R:1219)
- 6. Fuchsia (Sul-R:1192)
- 7. Med. Dk. Ecru (Sul-R:1054)
- 8. (Sul-R:1290)
- 9. Med. Blue (Sul-R:1029)
- 10. Duck Wing Blue (Sul-R:1250)
- 11. Blackberry (Sul-R:1215)

Alice_10-4x4.dst

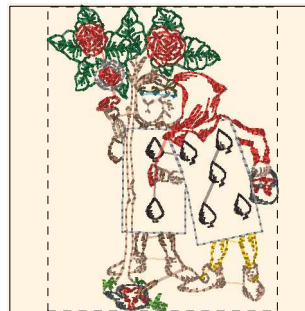
3.65x3.92 inches; 7,008 stitches
11 thread changes; 11 colors



- 1. Goldenrod (Sul-R:1024)
- 2. Sunflower Gold (Sul-R:1333)
- 3. Poppy (Sul-R:1317)
- 4. Nile Green (Sul-R:1274)
- 5. Garden Green (Sul-R:569)
- 6. Xmas Green (Sul-R:1051)
- 7. Toast (Sul-R:1266)
- 8. Gray (Sul-R:1219)
- 9. Med. Rose (Sul-R:1231)
- 10. Team Blue (Sul-R:1535)
- 11. Putty (Sul-R:1508)
- 12. Med. Dk. Ecru (Sul-R:1054)
- 13. (Sul-R:1290)
- 14. Steel Gray (Sul-R:1011)
- 15. Blackberry (Sul-R:1215)

Alice_11-4x4.dst

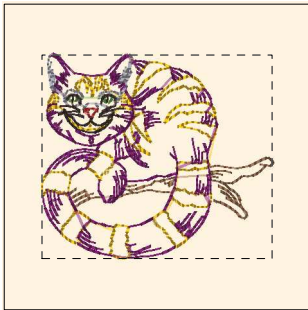
3.11x3.91 inches; 8,583 stitches
15 thread changes; 15 colors



- 1. Goldenrod (Sul-R:1024)
- 2. Blackberry (Sul-R:1215)
- 3. Poppy (Sul-R:1317)
- 4. Grass Green (Sul-R:1049)
- 5. Nile Green (Sul-R:1274)
- 6. Xmas Green (Sul-R:1051)
- 7. Drab Green (Sul-R:1228)
- 8. Toast (Sul-R:1266)
- 9. Med. Dk. Khaki (Sul-R:1040)
- 10. Dk. Ecru (Sul-R:1128)
- 11. Med. Dk. Ecru (Sul-R:1054)
- 12. Steel Gray (Sul-R:1011)
- 13. Duck Wing Blue (Sul-R:1250)

Alice_12-4x4.dst

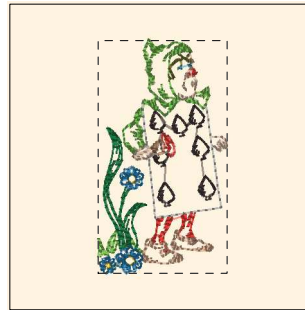
2.96x3.92 inches; 8,837 stitches
13 thread changes; 13 colors



- 1. Goldenrod (Sul-R:1024)
- 2. Toast (Sul-R:1266)
- 3. Fuchsia (Sul-R:1192)
- 4. Dk. Nickel Gray (Sul-R:1329)
- 5. Rust (Sul-R:1181)
- 6. Nile Green (Sul-R:1274)
- 7. Blackberry (Sul-R:1215)

Alice_13-4x4.dst

2.97x2.63 inches; 5,227 stitches
7 thread changes; 7 colors



- 1. Goldenrod (Sul-R:1024)
- 2. Blackberry (Sul-R:1215)
- 3. Poppy (Sul-R:1317)
- 4. Nile Green (Sul-R:1274)
- 5. Xmas Green (Sul-R:1051)
- 6. Drab Green (Sul-R:1228)
- 7. Toast (Sul-R:1266)
- 8. Dk. Ecru (Sul-R:1128)
- 9. Med. Dk. Ecru (Sul-R:1054)
- 10. Steel Gray (Sul-R:1011)
- 11. (Sul-R:1290)
- 12. Duck Wing Blue (Sul-R:1250)

Alice_14-4x4.dst

1.66x3.00 inches; 4,117 stitches
12 thread changes; 12 colors