

## Thread Charts

Thread	Consumption	Name	Brother	Country	Isacord	Polyester	Madeira	Rayo	Robison-Anton	Rayon
1	13.4% (7.3 m)	Wheat	370		1060		1061		2234	
2	21.2% (11.5 m)	Light Blue/Green	003		3652		1132		2305	
3	7.0% (3.8 m)	California Blue	575		3902		1176		2441	
4	7.9% (4.3 m)	Medium Brown	224		1565		1194		2481	
5	20.9% (11.3 m)	Lime Green	446		5833		1169		2457	
6	8.9% (4.8 m)	Violet	624		2764		1319		2424	
7	16.8% (9.1 m)	Floral Pink	133		2152		1309		2415	
8	0.7% (0.4 m)	Orange	224		1332		1146		2330	
9	1.2% (0.6 m)	Golden Yellow	336		0904		1137		2463	
10	2.1% (1.1 m)	Black	100		0020		1008		2552	

Upper thread 54.2 m  
Bobbin 18.1 m

This documentation was created with Embird 2004 software registered to Shane Reynolds.  
For more information regarding Embird 2004 please visit web site at <http://www.embirdusa.com>.  
Note: These are the closest threads Embird 2004 was able to found. They might differ from the real colors in some cases.



## Thread Charts

Thread	Consumption	Name	Brother	Country	Isacord	Polyester	Madeira Rayon	Robison-Anton	Rayon
1	7.4% (5.1 m)	Wheat	370		1060		1061		2234
2	10.3% (7.0 m)	Light Blue/Green	003		3652		1132		2305
3	10.0% (6.8 m)	California Blue	575		3902		1176		2441
4	4.4% (3.0 m)	Medium Orange/Brown	224		1332		1372		2231
5	3.3% (2.3 m)	Medium Brown	224		1565		1194		2481
6	7.5% (5.1 m)	Lime Green	446		5833		1169		2457
7	21.0% (14.3 m)	Fleece Green	485		5324		1051		2410
8	7.1% (4.8 m)	Violet	624		2764		1319		2424
9	19.8% (13.5 m)	Floral Pink	133		2152		1309		2415
10	4.0% (2.7 m)	Orange	224		1332		1146		2330
11	1.8% (1.2 m)	Golden Yellow	336		0904		1137		2463
12	3.4% (2.3 m)	Black	100		0020		1008		2552

Upper thread 68.1 m  
Bobbin 22.7 m

This documentation was created with Embird 2004 software registered to Shane Reynolds.  
For more information regarding Embird 2004 please visit web site at <http://www.embirdusa.com>.  
Note: These are the closest threads Embird 2004 was able to found. They might differ from the real colors in some cases.



## Thread Charts

Thread	Consumption	Name	Brother	Country	Isacord	Polyester	Madeira	Rayon	Robison-Anton	Rayon
1	16.7% (10.2 m)	Light Blue/Green	003		3652		1132		2305	
2	12.9% (7.9 m)	Wheat	370		1060		1061		2234	
3	8.9% (5.5 m)	California Blue	575		3902		1176		2441	
4	1.6% (1.0 m)	Honey	706		1123		1126		2338	
5	12.6% (7.8 m)	Lime Green	446		5833		1169		2457	
6	6.0% (3.7 m)	Violet	624		2764		1319		2424	
7	31.1% (19.1 m)	Floral Pink	133		2152		1309		2415	
8	7.7% (4.7 m)	Orange	224		1332		1146		2330	
9	1.2% (0.7 m)	Golden Yellow	336		0904		1137		2463	
10	1.3% (0.8 m)	Black	100		0020		1008		2552	

Upper thread 61.4 m  
Bobbin 20.5 m

This documentation was created with Embird 2004 software registered to Shane Reynolds.  
For more information regarding Embird 2004 please visit web site at <http://www.embirdusa.com>.  
Note: These are the closest threads Embird 2004 was able to found. They might differ from the real colors in some cases.

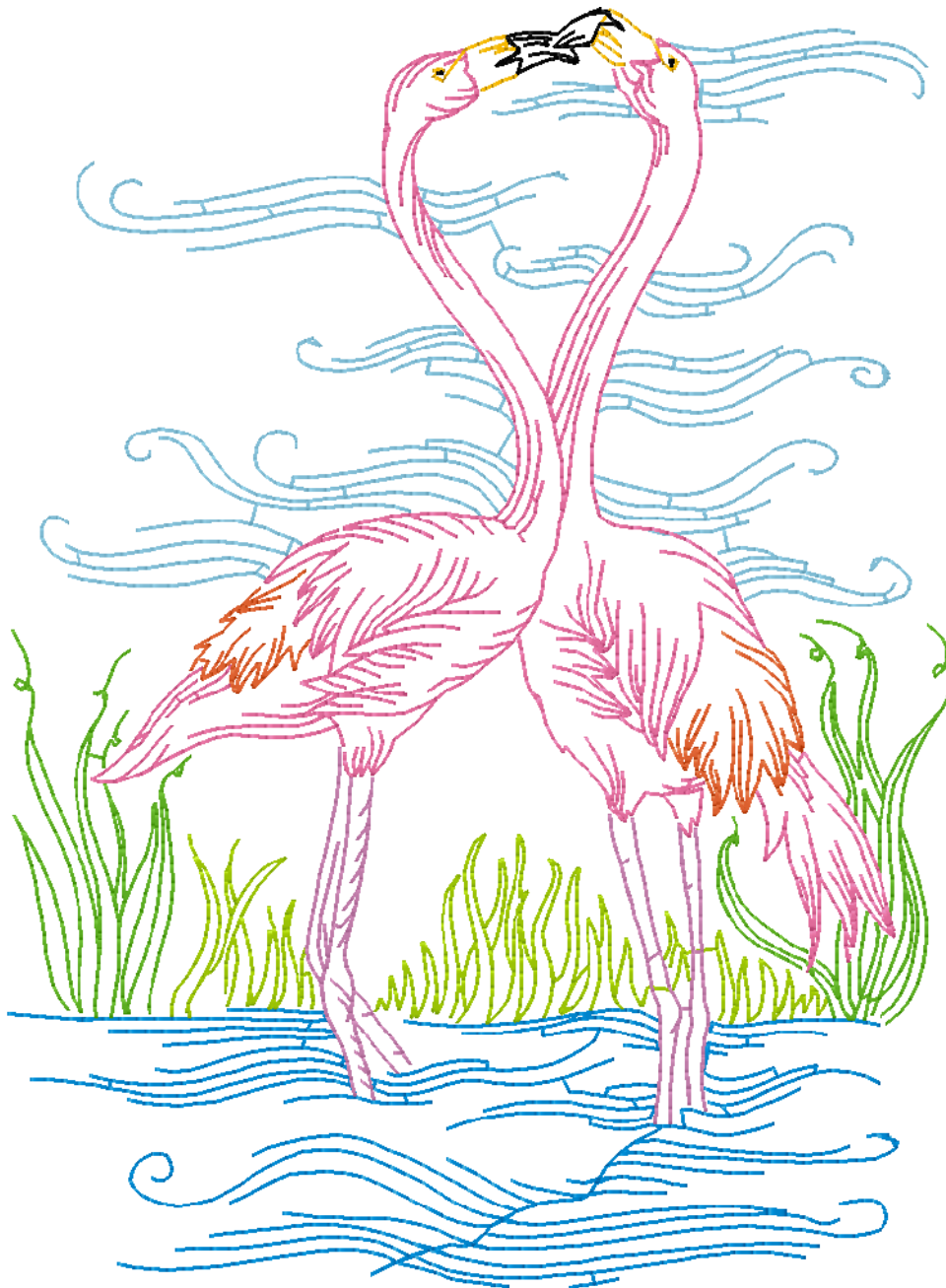


## Thread Charts

Thread	Consumption	Name	Brother	Country	Isacord	Polyester	Madeira	Rayon	Robison-Anton	Rayon
1	20.4% (9.6 m)	Light Blue/Green		003		3652		1132		2305
2	20.4% (9.6 m)	California Blue		575		3902		1176		2441
3	10.7% (5.0 m)	Dark Green		444		0546		1350		2320
4	12.3% (5.8 m)	Lime Green		446		5833		1169		2457
5	5.4% (2.5 m)	Violet		624		2764		1319		2424
6	23.6% (11.1 m)	Floral Pink		133		2152		1309		2415
7	4.7% (2.2 m)	Orange		224		1332		1146		2330
8	1.2% (0.6 m)	Golden Yellow		336		0904		1137		2463
9	1.2% (0.6 m)	Black		100		0020		1008		2552

Upper thread 46.9 m  
Bobbin 15.6 m

This documentation was created with Embird 2004 software registered to Shane Reynolds.  
For more information regarding Embird 2004 please visit web site at <http://www.embirdusa.com>.  
Note: These are the closest threads Embird 2004 was able to found. They might differ from the real colors in some cases.



## Thread Charts

Thread	Consumption	Name	Brother	Country	Isacord	Polyester	Madeira Rayon	Robison-Anton	Rayon
1	31.5% (11.5 m)	California Blue		575		3902	1176		2441
2	25.8% (9.5 m)	Lime Green		446		5833	1169		2457
3	7.8% (2.9 m)	Violet		624		2764	1319		2424
4	26.2% (9.6 m)	Floral Pink		133		2152	1309		2415
5	4.1% (1.5 m)	Orange		224		1332	1146		2330
6	2.2% (0.8 m)	Golden Yellow		336		0904	1137		2463
7	2.4% (0.9 m)	Black		100		0020	1008		2552

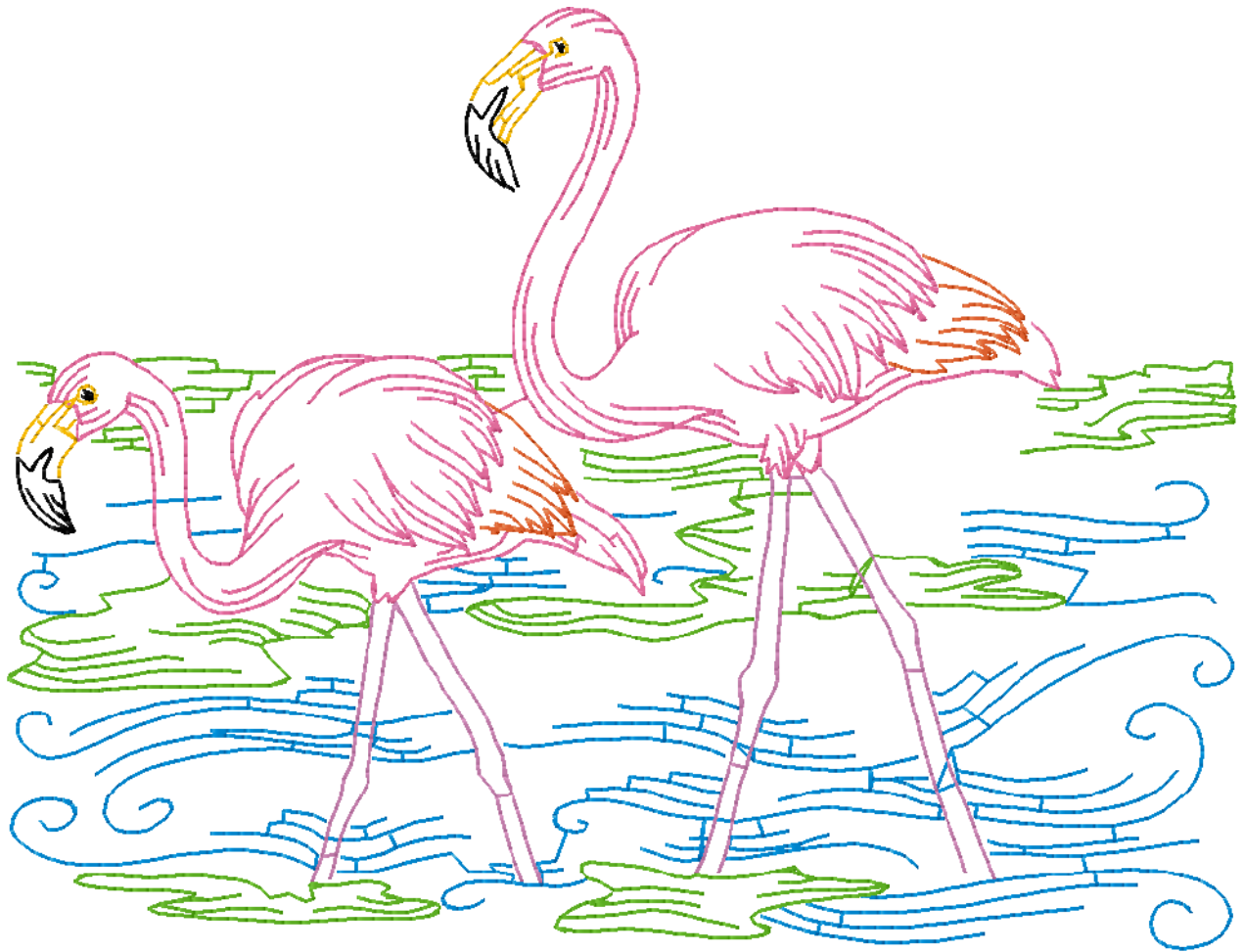
Upper thread 36.6 m

Bobbin 12.2 m

This documentation was created with Embird 2004 software registered to Shane Reynolds.

For more information regarding Embird 2004 please visit web site at <http://www.embirdusa.com>.

Note: These are the closest threads Embird 2004 was able to found. They might differ from the real colors in some cases.

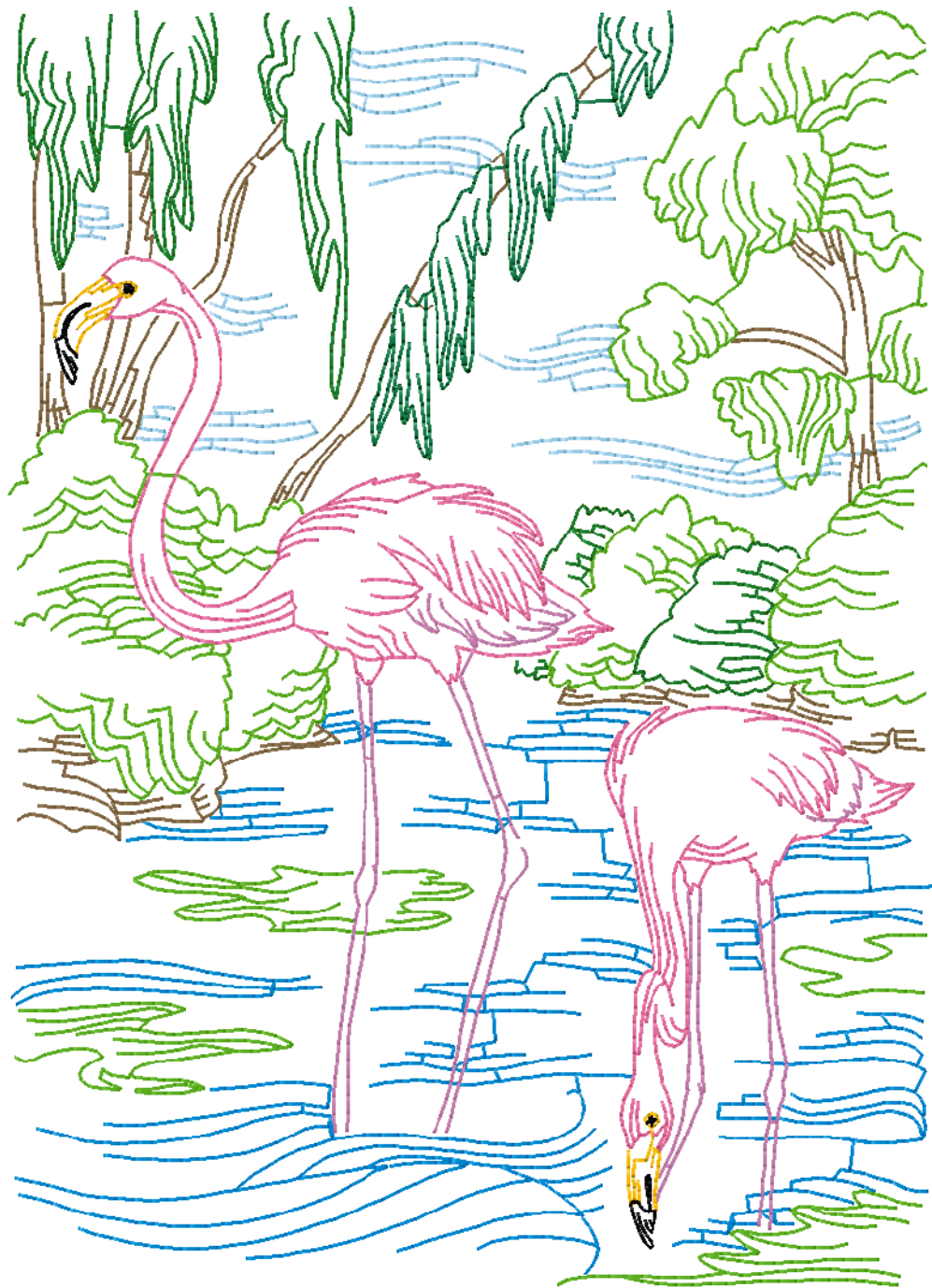


Thread Charts

Thread	Consumption	Name	Brother	Country Isacord	Polyester	Madeira Rayo	Robison-Anton	Rayon
1	18.7% (12.0 m)	California Blue	575		3902	1176		2441
2	7.3% (4.7 m)	Ice Blue	512		3820	1074		2300
3	9.7% (6.2 m)	Medium Brown	734		1565	1308		2227
4	26.5% (16.9 m)	Lime Green	446		5833	1169		2457
5	9.7% (6.2 m)	Fleece Green	485		5324	1051		2410
6	5.5% (3.5 m)	Green	485		5374	1370		2454
7	6.8% (4.4 m)	Violet	624		2764	1319		2424
8	11.9% (7.6 m)	Floral Pink	133		2152	1309		2415
9	1.6% (1.0 m)	Golden Yellow	336		0904	1137		2463
10	2.2% (1.4 m)	Black	100		0020	1008		2552

Upper thread 63.9 m  
 Bobbin 21.3 m

This documentation was created with Embird 2004 software registered to Shane Reynolds.  
 For more information regarding Embird 2004 please visit web site at <http://www.embirdusa.com>.  
 Note: These are the closest threads Embird 2004 was able to found. They might differ from the real colors in some cases.



Thread Charts

Thread	Consumption	Name	Brother	Country	Isacord	Polyester	Madeira	Rayon	Robison-Anton	Rayon
1	6.4% (3.8 m)	Light Blue/Green	003		3652		1132		2305	
2	24.0% (14.3 m)	Lime Green	446		5833		1169		2457	
3	30.8% (18.4 m)	California Blue	575		3902		1176		2441	
4	5.6% (3.4 m)	Green	485		5374		1370		2454	
5	6.2% (3.7 m)	Violet	624		2764		1319		2424	
6	22.1% (13.2 m)	Floral Pink	133		2152		1309		2415	
7	3.0% (1.8 m)	Orange	224		1332		1146		2330	
8	1.1% (0.6 m)	Golden Yellow	336		0904		1137		2463	
9	0.9% (0.5 m)	Black	100		0020		1008		2552	

Upper thread 59.7 m  
 Bobbin 19.9 m

This documentation was created with Embird 2004 software registered to Shane Reynolds.  
 For more information regarding Embird 2004 please visit web site at <http://www.embirdusa.com>.  
 Note: These are the closest threads Embird 2004 was able to found. They might differ from the real colors in some cases.

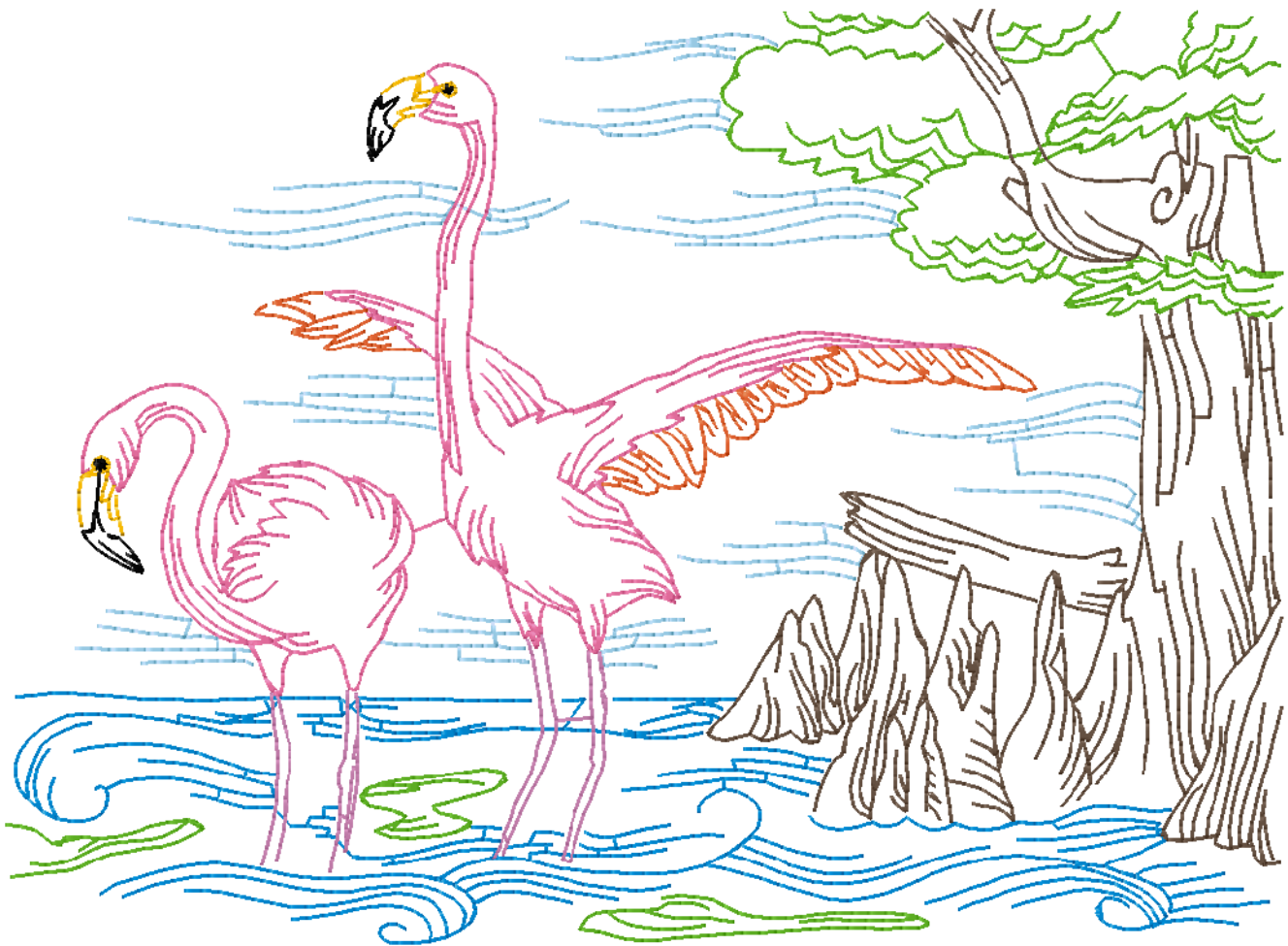


Thread Charts

Thread	Consumption	Name	Brother	Country	Isacord	Polyester	Madeira Rayon	Robison-Anton	Rayon
1	14.0% (6.9 m)	Ice Blue		512		3820	1074		2300
2	19.0% (9.3 m)	California Blue		575		3902	1176		2441
3	14.1% (6.9 m)	Lime Green		446		5833	1169		2457
4	25.5% (12.5 m)	Dark Grey		734		2022	1228		2575
5	3.5% (1.7 m)	Violet		624		2764	1319		2424
6	15.9% (7.8 m)	Floral Pink		133		2152	1309		2415
7	5.2% (2.6 m)	Orange		224		1332	1146		2330
8	1.3% (0.6 m)	Golden Yellow		336		0904	1137		2463
9	1.5% (0.7 m)	Black		100		0020	1008		2552

Upper thread 49.1 m  
 Bobbin 16.4 m

This documentation was created with Embird 2004 software registered to Shane Reynolds.  
 For more information regarding Embird 2004 please visit web site at <http://www.embirdusa.com>.  
 Note: These are the closest threads Embird 2004 was able to found. They might differ from the real colors in some cases.



Thread Charts

Thread	Consumption	Name	Brother	Country	Isacord	Polyester	Madeira	Rayon	Robison-Anton	Rayon
1	6.4% (2.6 m)	Light Blue/Green	003		3652		1132		2305	
2	25.8% (10.4 m)	California Blue	575		3902		1176		2441	
3	16.8% (6.8 m)	Lime Green	446		5833		1169		2457	
4	1.8% (0.7 m)	Medium Brown	734		1565		1308		2227	
5	2.9% (1.2 m)	Green	485		5374		1370		2454	
6	6.4% (2.6 m)	Violet	624		2764		1319		2424	
7	27.6% (11.1 m)	Floral Pink	133		2152		1309		2415	
8	7.4% (3.0 m)	Orange	224		1332		1146		2330	
9	1.8% (0.7 m)	Golden Yellow	336		0904		1137		2463	
10	3.1% (1.2 m)	Black	100		0020		1008		2552	

Upper thread 40.2 m  
 Bobbin 13.4 m

This documentation was created with Embird 2004 software registered to Shane Reynolds.  
 For more information regarding Embird 2004 please visit web site at <http://www.embirdusa.com>.  
 Note: These are the closest threads Embird 2004 was able to found. They might differ from the real colors in some cases.



## Thread Charts

Thread	Consumption	Name	Brother	Country	Isacord	Polyester	Madeira Rayon	Robison-Anton	Rayon
1	31.3% (13.3 m)	California Blue		575		3902	1176		2441
2	35.5% (15.0 m)	Lime		463		0453	1306		2279
3	4.2% (1.8 m)	Violet		624		2764	1319		2424
4	22.7% (9.6 m)	Floral Pink		133		2152	1309		2415
5	3.3% (1.4 m)	Orange		224		1332	1146		2330
6	1.7% (0.7 m)	Golden Yellow		336		0904	1137		2463
7	1.2% (0.5 m)	Black		100		0020	1008		2552

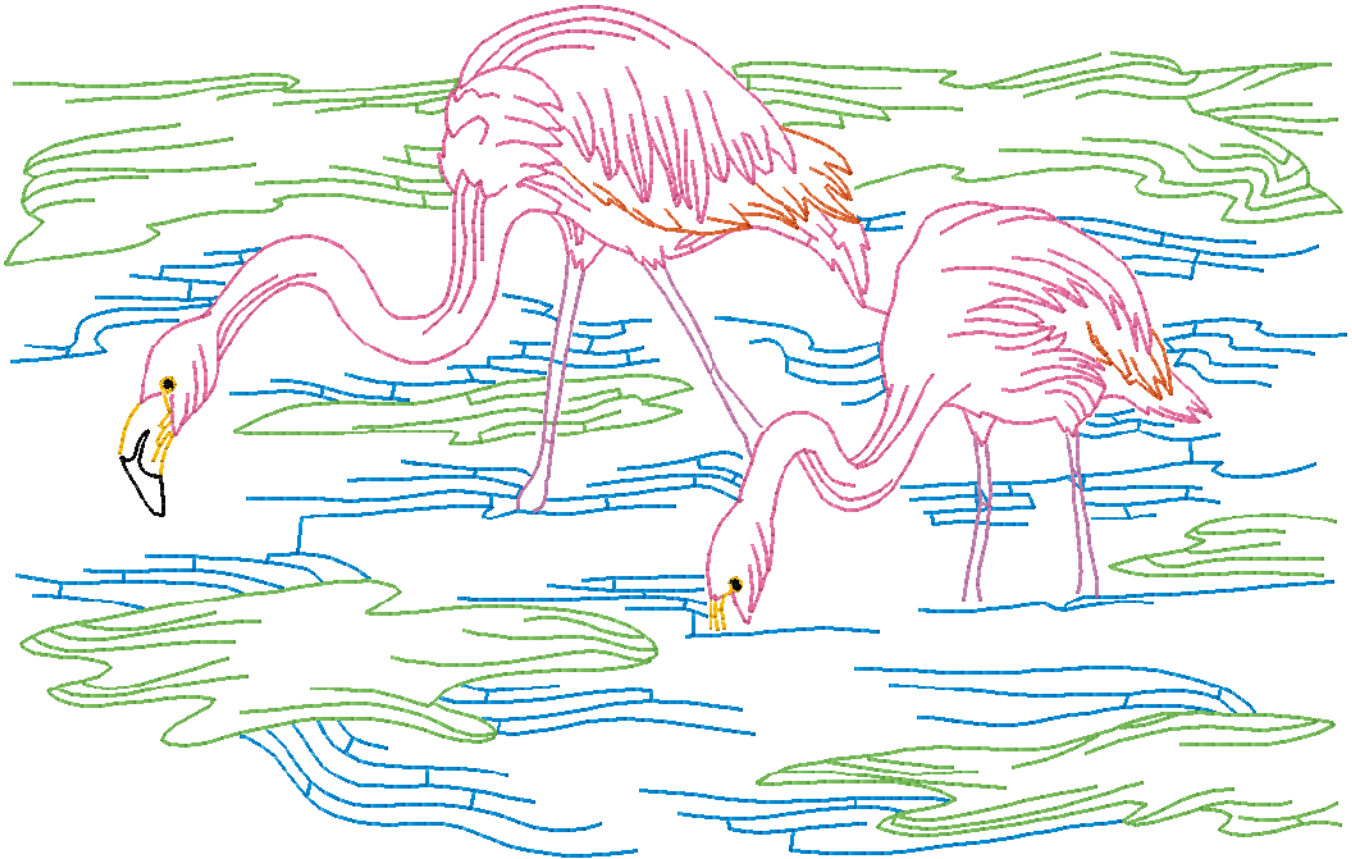
Upper thread 42.3 m

Bobbin 14.1 m

This documentation was created with Embird 2004 software registered to Shane Reynolds.

For more information regarding Embird 2004 please visit web site at <http://www.embirdusa.com>.

Note: These are the closest threads Embird 2004 was able to found. They might differ from the real colors in some cases.

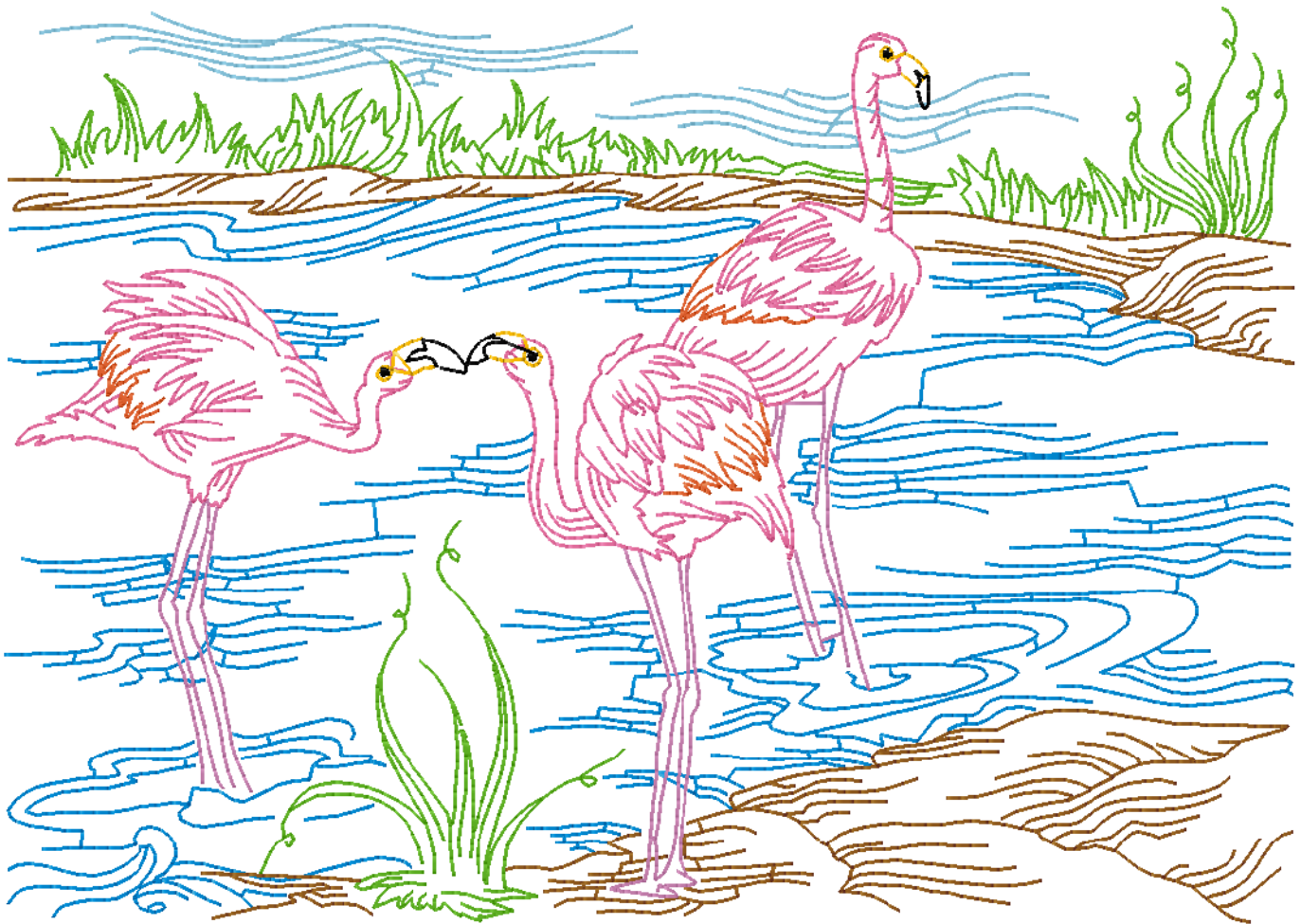


## Thread Charts

Thread	Consumption	Name	Brother	Country	Isacord	Polyester	Madeira Rayon	Robison-Anton	Rayon
1	5.8% (3.7 m)	Light Blue/Green	003		3652		1132		2305
2	15.7% (10.1 m)	Lime Green	446		5833		1169		2457
3	34.5% (22.2 m)	California Blue	575		3902		1176		2441
4	18.5% (11.9 m)	Medium Brown	224		1565		1194		2481
5	6.2% (4.0 m)	Violet	624		2764		1319		2424
6	14.5% (9.3 m)	Floral Pink	133		2152		1309		2415
7	2.6% (1.7 m)	Orange	224		1332		1146		2330
8	1.0% (0.7 m)	Golden Yellow	336		0904		1137		2463
9	1.3% (0.8 m)	Black	100		0020		1008		2552

Upper thread 64.3 m  
Bobbin 21.4 m

This documentation was created with Embird 2004 software registered to Shane Reynolds.  
For more information regarding Embird 2004 please visit web site at <http://www.embirdusa.com>.  
Note: These are the closest threads Embird 2004 was able to found. They might differ from the real colors in some cases.



## Thread Charts

Thread	Consumption	Name	Brother	Country	Isacord	Polyester	Madeira Rayon	Robison-Anton	Rayon
1	17.0% (7.3 m)	Ice Blue		512		3820	1074		2300
2	16.5% (7.1 m)	Wheat		370		1060	1061		2234
3	19.2% (8.3 m)	California Blue		575		3902	1176		2441
4	2.9% (1.2 m)	Honey		706		1123	1126		2338
5	14.7% (6.3 m)	Fleece Green		485		5324	1051		2410
6	3.1% (1.3 m)	Violet		624		2764	1319		2424
7	19.9% (8.6 m)	Floral Pink		133		2152	1309		2415
8	4.1% (1.8 m)	Orange		224		1332	1146		2330
9	1.3% (0.6 m)	Golden Yellow		336		0904	1137		2463
10	1.4% (0.6 m)	Black		100		0020	1008		2552

Upper thread 43.1 m  
Bobbin 14.4 m

This documentation was created with Embird 2004 software registered to Shane Reynolds.  
For more information regarding Embird 2004 please visit web site at <http://www.embirdusa.com>.  
Note: These are the closest threads Embird 2004 was able to found. They might differ from the real colors in some cases.

