

Printed 9/12/2008

2.80x3.91 inches; 7,682 stitches
10 thread changes; 10 colors

- 1. Yellow (Sul-R:1023)
- 2. Butterfly Gold (Sul-R:567)
- 3. Brick (Sul-R:1081)
- 4. Mallard Green (Sul-R:1208)
- 5. Dark Brown (Sul-R:1130)
- 6. (Sul-R:1269)
- 7. Bright Green (Sul-R:1278)
- 8. Dewberry (Sul-R:1304)
- 9. Sterling (Sul-R:1295)
- 10. Med. Turquoise (Sul-R:1094)



Design Notes:

Printed 9/12/2008

3.00x3.91 inches; 9,885 stitches
10 thread changes; 10 colors

- 1. Sterling (Sul-R:1295)
- 2. (Sul-R:1269)
- 3. Mallard Green (Sul-R:1208)
- 4. Poppy (Sul-R:1317)
- 5. Yellow (Sul-R:1023)
- 6. Butterfly Gold (Sul-R:567)
- 7. Dewberry (Sul-R:1304)
- 8. Dk. Gray Khaki (Sul-R:1270)
- 9. Blue Black (Sul-R:1182)
- 10. Med. Turquoise (Sul-R:1094)



Design Notes:

Printed 9/12/2008

2.72x3.89 inches; 8,369 stitches
10 thread changes; 10 colors

- 1. Lt. Avocado (Sul-R:1209)
- 2. Med. Blue (Sul-R:1029)
- 3. Mallard Green (Sul-R:1208)
- 4. (Sul-R:1269)
- 5. Butterfly Gold (Sul-R:567)
- 6. Yellow (Sul-R:1023)
- 7. Deep Rose (Sul-R:1511)
- 8. Med. Turquoise (Sul-R:1094)
- 9. Dewberry (Sul-R:1304)
- 10. Blue Black (Sul-R:1182)



Design Notes:

Printed 9/12/2008

3.91x2.80 inches; 7,467 stitches
11 thread changes; 11 colors

- 1. Mallard Green (Sul-R:1208)
- 2. Bright Green (Sul-R:1278)
- 3. True Red (Sul-R:1039)
- 4. (Sul-R:1269)
- 5. Sterling (Sul-R:1295)
- 6. Blue Black (Sul-R:1182)
- 7. Butterfly Gold (Sul-R:567)
- 8. Yellow (Sul-R:1023)
- 9. Dk. Gray Khaki (Sul-R:1270)
- 10. Dewberry (Sul-R:1304)
- 11. Med. Turquoise (Sul-R:1094)



Design Notes:

Printed 9/12/2008

3.91x2.58 inches; 5,745 stitches
10 thread changes; 10 colors

- 1. (Sul-R:1269)
- 2. Brick (Sul-R:1081)
- 3. Butterfly Gold (Sul-R:567)
- 4. Mallard Green (Sul-R:1208)
- 5. Yellow (Sul-R:1023)
- 6. Dark Jade (Sul-R:1206)
- 7. Dewberry (Sul-R:1304)
- 8. Dk. Gray Khaki (Sul-R:1270)
- 9. Med. Turquoise (Sul-R:1094)
- 10. Blue Black (Sul-R:1182)



Design Notes:

Printed 9/12/2008

2.64x3.91 inches; 6,775 stitches
8 thread changes; 8 colors

- 1. Mallard Green (Sul-R:1208)
- 2. Butterfly Gold (Sul-R:567)
- 3. Brick (Sul-R:1081)
- 4. Lt. Avocado (Sul-R:1209)
- 5. (Sul-R:1269)
- 6. Dewberry (Sul-R:1304)
- 7. Med. Turquoise (Sul-R:1094)
- 8. Blue Black (Sul-R:1182)



Design Notes:

Printed 9/12/2008

3.91x2.80 inches; 12,297 stitches
8 thread changes; 8 colors

- 1. Mallard Green (Sul-R:1208)
- 2. Brick (Sul-R:1081)
- 3. Butterfly Gold (Sul-R:567)
- 4. Yellow (Sul-R:1023)
- 5. Dk. Gray Khaki (Sul-R:1270)
- 6. Deep Rose (Sul-R:1511)
- 7. Dewberry (Sul-R:1304)
- 8. Med. Turquoise (Sul-R:1094)



Design Notes:

Printed 9/12/2008

3.91x3.05 inches; 9,216 stitches
11 thread changes; 11 colors

- 1. (Sul-R:1269)
- 2. Butterfly Gold (Sul-R:567)
- 3. Tawny Brown (Sul-R:1058)
- 4. Brick (Sul-R:1081)
- 5. Dusty Navy (Sul-R:1198)
- 6. Dk. Gray Khaki (Sul-R:1270)
- 7. Khaki (Sul-R:1212)
- 8. Dk. Periwinkle (Sul-R:1226)
- 9. Dewberry (Sul-R:1304)
- 10. Blue Black (Sul-R:1182)
- 11. Med. Turquoise (Sul-R:1094)



Design Notes:

Printed 9/12/2008

2.90x3.92 inches; 8,322 stitches
9 thread changes; 9 colors

- 1. Mallard Green (Sul-R:1208)
- 2. Butterfly Gold (Sul-R:567)
- 3. (Sul-R:1269)
- 4. Bright Green (Sul-R:1278)
- 5. Dewberry (Sul-R:1304)
- 6. Dusty Navy (Sul-R:1198)
- 7. Dk. Gray Khaki (Sul-R:1270)
- 8. Brick (Sul-R:1081)
- 9. Med. Turquoise (Sul-R:1094)

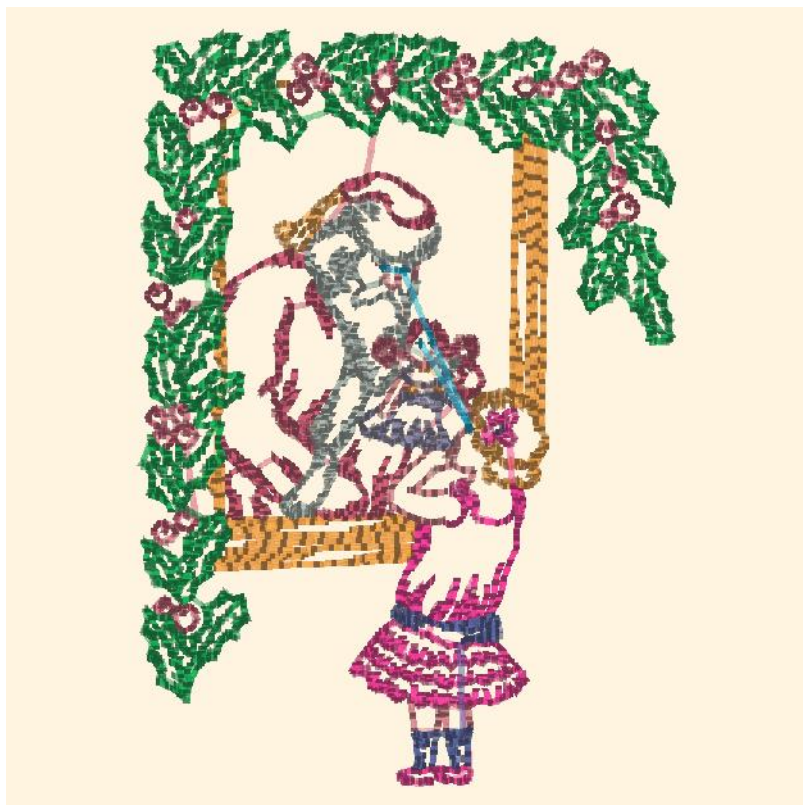


Design Notes:

Printed 9/12/2008

2.78x3.91 inches; 12,299 stitches
9 thread changes; 9 colors

- 1. Butterfly Gold (Sul-R:567)
- 2. Brick (Sul-R:1081)
- 3. Bright Green (Sul-R:1278)
- 4. Deep Rose (Sul-R:1511)
- 5. Dewberry (Sul-R:1304)
- 6. Dusty Navy (Sul-R:1198)
- 7. Sterling (Sul-R:1295)
- 8. Dk. Gray Khaki (Sul-R:1270)
- 9. Med. Turquoise (Sul-R:1094)



Design Notes:

Printed 9/12/2008

3.91x2.99 inches; 9,906 stitches
7 thread changes; 7 colors

- 1. Butterfly Gold (Sul-R:567)
- 2. Brick (Sul-R:1081)
- 3. (Sul-R:1269)
- 4. Red Jubilee (Sul-R:1263)
- 5. Dewberry (Sul-R:1304)
- 6. Dk. Gray Khaki (Sul-R:1270)
- 7. Med. Turquoise (Sul-R:1094)



Design Notes:

Printed 9/12/2008

3.91x3.30 inches; 9,833 stitches
9 thread changes; 9 colors

- 1. Yellow (Sul-R:1023)
- 2. Brick (Sul-R:1081)
- 3. Butterfly Gold (Sul-R:567)
- 4. (Sul-R:1269)
- 5. Bright Green (Sul-R:1278)
- 6. Dewberry (Sul-R:1304)
- 7. Sterling (Sul-R:1295)
- 8. Dk. Gray Khaki (Sul-R:1270)
- 9. Med. Turquoise (Sul-R:1094)



Design Notes: