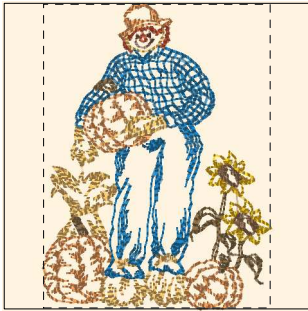


Printed 8/14/2009



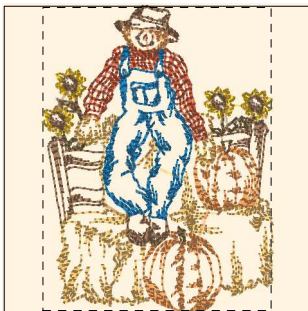
- 1. Goldenrod (Sul-R:1024)
- 2. Maple (Sul-R:1021)
- 3. (Sul-R:614)
- 4. Burnt Toast (Sul-R:1265)
- 5. Toast (Sul-R:1266)
- 6. Apricot (Sul-R:1239)
- 7. Cornsilk (Sul-R:502)
- 8. (Sul-R:1290)

Scarecrow_01-4x4.dst
2.92x3.91 inches; 9,814 stitches
8 thread changes; 8 colors



- 1. Goldenrod (Sul-R:1024)
- 2. Maple (Sul-R:1021)
- 3. (Sul-R:614)
- 4. Toast (Sul-R:1266)
- 5. Apricot (Sul-R:1239)
- 6. Cornsilk (Sul-R:502)
- 7. (Sul-R:1290)

Scarecrow_02-4x4.dst
2.84x3.91 inches; 10,558 stitches
7 thread changes; 7 colors



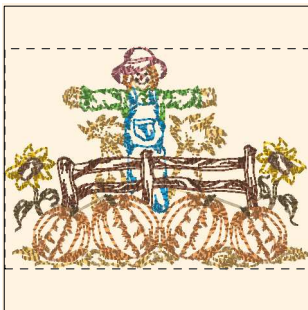
- 1. Cornsilk (Sul-R:502)
- 2. Goldenrod (Sul-R:1024)
- 3. Burnt Toast (Sul-R:1265)
- 4. Toast (Sul-R:1266)
- 5. Apricot (Sul-R:1239)
- 6. Maple (Sul-R:1021)
- 7. (Sul-R:1290)

Scarecrow_03-4x4.dst
2.94x3.91 inches; 11,155 stitches
7 thread changes; 7 colors



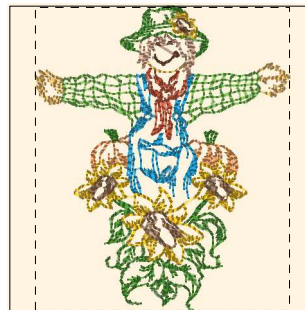
- 1. Burnt Toast (Sul-R:1265)
- 2. Apricot (Sul-R:1239)
- 3. Goldenrod (Sul-R:1024)
- 4. Toast (Sul-R:1266)
- 5. Cornsilk (Sul-R:502)
- 6. Maple (Sul-R:1021)
- 7. Duck Wing Blue (Sul-R:1250)
- 8. (Sul-R:614)
- 9. Maple (Sul-R:1021)

Scarecrow_04-4x4.dst
3.43x3.91 inches; 9,812 stitches
9 thread changes; 8 colors



- 1. Cornsilk (Sul-R:502)
- 2. Duck Wing Blue (Sul-R:1250)
- 3. (Sul-R:614)
- 4. Apricot (Sul-R:1239)
- 5. Goldenrod (Sul-R:1024)
- 6. Autumn Gold (Sul-R:523)
- 7. Burnt Toast (Sul-R:1265)
- 8. Nile Green (Sul-R:1274)
- 9. Toast (Sul-R:1266)
- 10. Dewberry (Sul-R:1304)
- 11. Poppy (Sul-R:1317)
- 12. (Sul-R:614)

Scarecrow_05-4x4.dst
3.92x2.84 inches; 10,581 stitches
12 thread changes; 11 colors



- 1. Apricot (Sul-R:1239)
- 2. Grass Green (Sul-R:1049)
- 3. Goldenrod (Sul-R:1024)
- 4. Toast (Sul-R:1266)
- 5. Cornsilk (Sul-R:502)
- 6. Nile Green (Sul-R:1274)
- 7. Duck Wing Blue (Sul-R:1250)
- 8. Maple (Sul-R:1021)
- 9. Grass Green (Sul-R:1049)
- 10. Dk. Ecu (Sul-R:1128)
- 11. (Sul-R:614)

Scarecrow_06-4x4.dst
3.27x3.91 inches; 7,989 stitches
11 thread changes; 10 colors



- 1. Burnt Toast (Sul-R:1265)
- 2. Spark Gold (Sul-R:1083)
- 3. Burnt Toast (Sul-R:1265)
- 4. Maple (Sul-R:1021)
- 5. Cornsilk (Sul-R:502)
- 6. Dusty Navy (Sul-R:1198)
- 7. Bittersweet (Sul-R:1313)

Scarecrow_07-4x4.dst
3.90x2.79 inches; 8,103 stitches
7 thread changes; 6 colors



- 1. Bright Green (Sul-R:1278)
- 2. Spark Gold (Sul-R:1083)
- 3. Burnt Toast (Sul-R:1265)
- 4. Maple (Sul-R:1021)
- 5. Dusty Navy (Sul-R:1198)
- 6. Lt. Brown (Sul-R:1170)
- 7. Bittersweet (Sul-R:1313)
- 8. Cornsilk (Sul-R:502)

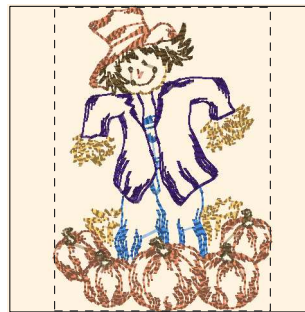
Scarecrow_08-4x4.dst
3.91x2.84 inches; 7,760 stitches
8 thread changes; 8 colors

Printed 8/14/2009



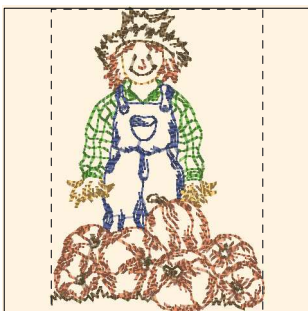
- 1. Spark Gold (Sul-R:1083)
- 2. Burnt Toast (Sul-R:1265)
- 3. Maple (Sul-R:1021)
- 4. Cornsilk (Sul-R:502)
- 5. Bittersweet (Sul-R:1313)
- 6. Burnt Toast (Sul-R:1265)
- 7. Dusty Navy (Sul-R:1198)
- 8. Deep Eggplant (Sul-R:1301)

Scarecrow_09-4x4.dst
3.91x2.90 inches; 10,321 stitches
8 thread changes; 7 colors



- 1. Royal Blue (Sul-R:1076)
- 2. Cornsilk (Sul-R:502)
- 3. Bittersweet (Sul-R:1313)
- 4. Burnt Toast (Sul-R:1265)
- 5. Lt. Brown (Sul-R:1170)
- 6. Deep Eggplant (Sul-R:1301)
- 7. Maple (Sul-R:1021)
- 8. Burnt Toast (Sul-R:1265)

Scarecrow_10-4x4.dst
2.78x3.91 inches; 8,248 stitches
8 thread changes; 7 colors



- 1. Burnt Toast (Sul-R:1265)
- 2. Bittersweet (Sul-R:1313)
- 3. Cornsilk (Sul-R:502)
- 4. Nile Green (Sul-R:1274)
- 5. Dusty Navy (Sul-R:1198)
- 6. Burnt Toast (Sul-R:1265)
- 7. Maple (Sul-R:1021)

Scarecrow_11-4x4.dst
2.72x3.91 inches; 7,732 stitches
7 thread changes; 6 colors



- 1. Cornsilk (Sul-R:502)
- 2. Burnt Toast (Sul-R:1265)
- 3. Spark Gold (Sul-R:1083)
- 4. Burnt Toast (Sul-R:1265)
- 5. Maple (Sul-R:1021)
- 6. Dusty Navy (Sul-R:1198)
- 7. Bittersweet (Sul-R:1313)

Scarecrow_12-4x4.dst
2.90x3.91 inches; 10,055 stitches
7 thread changes; 6 colors