

Thread Charts

Thread	Consumption	Name	Brother	Country Isacord	Polyest	Robison-Anton Rayon
1	1.9% (1.0 m)	California Blue	575	3902	2441	
2	12.9% (7.1 m)	Rancho Brown	734	1565	2227	
3	11.3% (6.2 m)	Dark Yellow	354	0932	2602	
4	2.1% (1.1 m)	Blue	564	3611	2438	
5	14.8% (8.1 m)	Dark Green/Yellow	446	0945	2229	
6	11.8% (6.5 m)	Fluo Orange	336	0904	2463	
7	4.4% (2.4 m)	Green	446	0453	2214	
8	2.4% (1.3 m)	Bright Green	485	5324	2410	
9	17.6% (9.7 m)	Aurifil Royal Purple	625	2500	2380	
10	11.2% (6.1 m)	Shell Pink	155	1840	2412	
11	2.5% (1.4 m)	Amber Beige	122	0862	2336	
12	6.5% (3.6 m)	Scarlet	148	1703	2420	
13	0.6% (0.3 m)	Black	717	1375	2411	

Upper thread 54.9 m
 Bobbin 18.3 m

This documentation was created with Embird 2004 software registered to Shane Reynolds.
 For more information regarding Embird 2004 please visit web site at <http://www.embirdusa.com>.
 Note: These are the closest threads Embird 2004 was able to find. They might differ from the real colors in some cases.



Thread Charts

Thread	Consumption	Name	Brother	Country Isacord	Polyest	Robison-Anton	Rayon
1	3.5% (2.2 m)	Gold	414		0842		2596
2	15.5% (9.8 m)	Dark Grey	734		0112		2265
3	6.8% (4.3 m)	Dark Yellow	354		0932		2602
4	16.3% (10.3 m)	Rancho Brown	734		1565		2227
5	14.1% (8.9 m)	Dark Green/Yellow	446		0945		2229
6	2.2% (1.4 m)	Amber Beige	122		0862		2336
7	16.0% (10.1 m)	Fluo Orange	336		0904		2463
8	8.0% (5.0 m)	Aurifil Royal Purple	625		2500		2380
9	10.4% (6.6 m)	Ruby Glint	149		2320		2261
10	1.3% (0.8 m)	GS Gray	745		4073		2585
11	5.7% (3.6 m)	California Blue	575		3902		2441
12	0.3% (0.2 m)	Black	717		1375		2411

Upper thread 63.2 m

Bobbin 21.1 m

This documentation was created with Embird 2004 software registered to Shane Reynolds.

For more information regarding Embird 2004 please visit web site at <http://www.embirdusa.com>.

Note: These are the closest threads Embird 2004 was able to find. They might differ from the real colors in some cases.

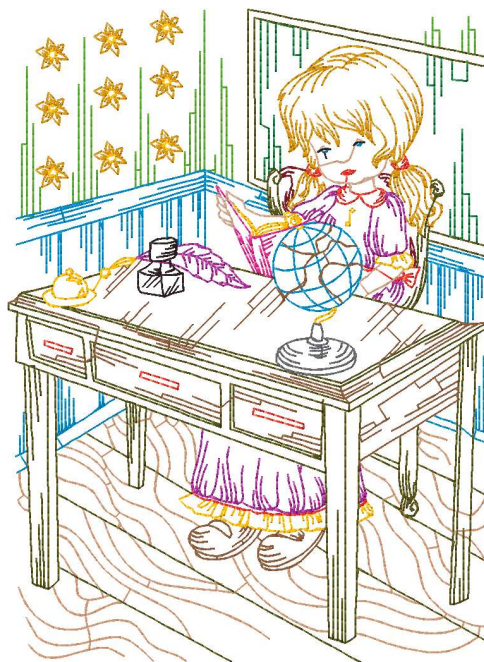


Thread Charts

Thread	Consumption	Name	Brother	Country	Isacord	Polyest	Robison-Anton	Rayon
1	11.2% (8.2 m)	Cinnamon	706		0722		2273	
2	5.6% (4.1 m)	Green	446		0453		2214	
3	11.6% (8.4 m)	California Blue	575		3902		2441	
4	0.9% (0.6 m)	Cherokee Red	255		2224		2496	
5	12.0% (8.8 m)	Dark Yellow	354		0932		2602	
6	5.2% (3.8 m)	Fluo Orange	336		0904		2463	
7	3.0% (2.2 m)	Scarlet	148		1703		2420	
8	3.1% (2.3 m)	Green	485		5324		2454	
9	6.0% (4.4 m)	Aurifil Royal Purple	625		2500		2380	
10	25.5% (18.6 m)	Dark Green/Yellow	446		0945		2229	
11	10.3% (7.6 m)	Rancho Brown	734		1565		2227	
12	1.5% (1.1 m)	Dark Grey	734		0112		2265	
13	1.2% (0.9 m)	Ruby Glint	149		2320		2261	
14	1.4% (1.0 m)	Amber Beige	122		0862		2336	
15	1.6% (1.1 m)	Black	717		1375		2411	

Upper thread 73.1 m
 Bobbin 24.4 m

This documentation was created with Embird 2004 software registered to Shane Reynolds.
 For more information regarding Embird 2004 please visit web site at <http://www.embirdusa.com>.
 Note: These are the closest threads Embird 2004 was able to find. They might differ from the real colors in some cases.



Thread Charts

Thread	Consumption	Name	Brother	Country Isacord	Polyest	Robison-Anton	Rayon
1	6.3% (3.7 m)	Shell Pink	155		1840		2412
2	8.1% (4.7 m)	Tropical Blue	575		3522		2442
3	15.6% (9.1 m)	Dark Green/Yellow	446		0945		2229
4	3.8% (2.2 m)	Fluo Orange	336		0904		2463
5	6.5% (3.8 m)	Dark Yellow	354		0932		2602
6	9.2% (5.4 m)	Green	446		0453		2214
7	1.4% (0.8 m)	Amber Beige	122		0862		2336
8	15.6% (9.1 m)	California Blue	575		3902		2441
9	9.7% (5.7 m)	Rancho Brown	734		1565		2227
10	10.7% (6.3 m)	Scarlet	148		1703		2420
11	0.5% (0.3 m)	Bright Green	485		5324		2410
12	5.7% (3.3 m)	Dark Grey	734		0112		2265
13	3.3% (1.9 m)	Cinnamon	706		0722		2273
14	1.9% (1.1 m)	GS Gray	745		4073		2585
15	1.6% (0.9 m)	Black	717		1375		2411

Upper thread 58.4 m
 Bobbin 19.5 m

This documentation was created with Embird 2004 software registered to Shane Reynolds.
 For more information regarding Embird 2004 please visit web site at <http://www.embirdusa.com>.
 Note: These are the closest threads Embird 2004 was able to find. They might differ from the real colors in some cases.



Thread Charts

Thread	Consumption	Name	Brother	Country Isacord	Polyest	Robison-Anton Rayon
1	10.0% (5.9 m)	Rancho Brown	734		1565	2227
2	3.9% (2.3 m)	Bright Green	446		5934	2209
3	21.8% (12.8 m)	Bright Green	485		5324	2410
4	13.5% (7.9 m)	Fluo Orange	336		0904	2463
5	2.8% (1.6 m)	Orange	264		1311	2468
6	6.1% (3.6 m)	Scarlet	148		1703	2420
7	1.4% (0.8 m)	Tropical Blue	575		3522	2442
8	19.1% (11.2 m)	Ruby Glint	149		2320	2261
9	5.5% (3.2 m)	Aurifil Royal Purple	625		2500	2380
10	2.7% (1.6 m)	Amber Beige	122		0862	2336
11	12.4% (7.3 m)	California Blue	575		3902	2441
12	0.7% (0.4 m)	Black	717		1375	2411

Upper thread 58.6 m
 Bobbin 19.5 m

This documentation was created with Embird 2004 software registered to Shane Reynolds.
 For more information regarding Embird 2004 please visit web site at <http://www.embirdusa.com>.
 Note: These are the closest threads Embird 2004 was able to found. They might differ from the real colors in some cases.



Thread Charts

Thread	Consumption	Name	Brother	Country	Isacord	Polyest	Robison-Anton	Rayon
1	38.3% (27.7 m)	Rancho Brown	734		1565		2227	
2	2.5% (1.8 m)	Amber Beige	122		0862		2336	
3	2.4% (1.7 m)	Fluo Orange	336		0904		2463	
4	8.9% (6.4 m)	Dark Yellow	354		0932		2602	
5	13.0% (9.4 m)	Scarlet	148		1703		2420	
6	4.7% (3.4 m)	Green	446		0453		2214	
7	6.5% (4.7 m)	Bright Green	485		5324		2410	
8	7.5% (5.4 m)	Green	485		5324		2454	
9	1.5% (1.0 m)	Dark Grey	734		0112		2265	
10	5.8% (4.2 m)	Aurifil Royal Purple	625		2500		2380	
11	2.8% (2.0 m)	California Blue	575		3902		2441	
12	5.1% (3.7 m)	Dark Orange/Brown	224		1725		2231	
13	0.2% (0.2 m)	Gold/Yellow	404		0704		2326	
14	0.7% (0.5 m)	Black	717		1375		2411	

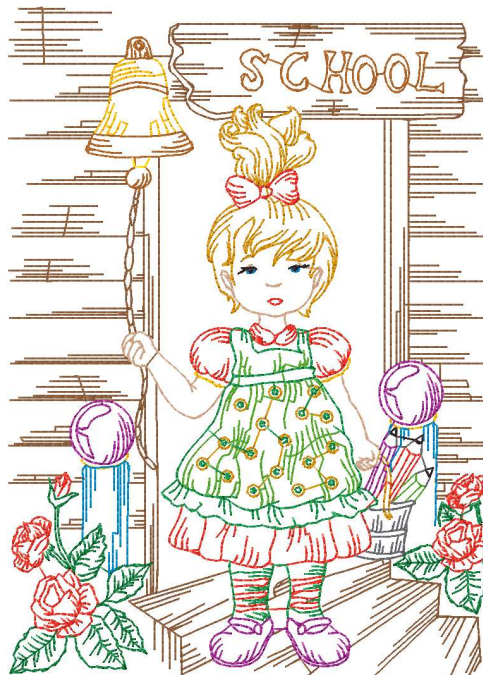
Upper thread 72.2 m

Bobbin 24.1 m

This documentation was created with Embird 2004 software registered to Shane Reynolds.

For more information regarding Embird 2004 please visit web site at <http://www.embirdusa.com>.

Note: These are the closest threads Embird 2004 was able to find. They might differ from the real colors in some cases.



Thread Charts

Thread	Consumption	Name	Brother	Country Isacord	Polyest	Robison-Anton	Rayon
1	6.4% (4.5 m)	Light Blue	015		3641		2533
2	1.6% (1.1 m)	Amber Beige	122		0862		2336
3	2.6% (1.8 m)	Fluo Orange	336		0904		2463
4	11.7% (8.2 m)	Dark Yellow	354		0932		2602
5	9.0% (6.3 m)	Scarlet	148		1703		2420
6	1.6% (1.1 m)	Red	024		1904		2418
7	6.8% (4.8 m)	Dark Green/Yellow	446		0945		2229
8	10.0% (7.0 m)	Bright Green	485		5324		2410
9	3.3% (2.3 m)	Vibrant Green	057		5326		2579
10	9.1% (6.4 m)	Rancho Brown	734		1565		2227
11	7.5% (5.3 m)	Dark Grey	734		0112		2265
12	9.0% (6.3 m)	Aurifil Royal Purple	625		2500		2380
13	11.3% (7.9 m)	Ruby Glint	149		2320		2261
14	6.1% (4.3 m)	GS Gray	745		4073		2585
15	3.7% (2.6 m)	California Blue	575		3902		2441
16	0.5% (0.3 m)	Black	717		1375		2411

Upper thread 70.3 m

Bobbin 23.4 m

This documentation was created with Embird 2004 software registered to Shane Reynolds.
For more information regarding Embird 2004 please visit web site at <http://www.embirdusa.com>.

Note: These are the closest threads Embird 2004 was able to find. They might differ from the real colors in some cases.

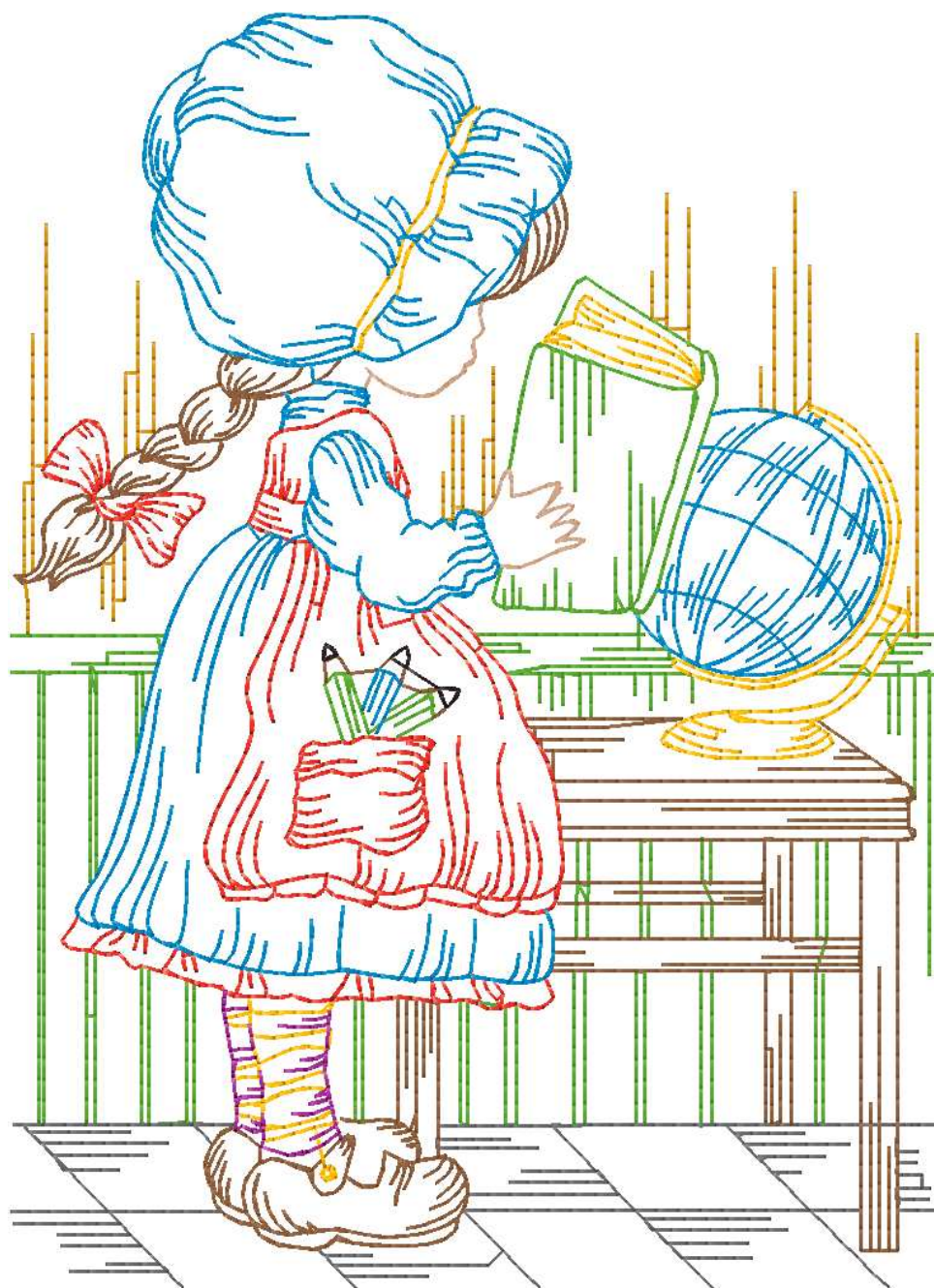


Thread Charts

Thread	Consumption	Name	Brother	Country Isacord	Polyest	Robison-Anton	Rayon
1	5.9% (3.3 m)	Dark Yellow	354		0932		2602
2	19.0% (10.8 m)	Green	446		0453		2214
3	8.5% (4.8 m)	Dark Grey	734		0112		2265
4	20.4% (11.5 m)	Rancho Brown	734		1565		2227
5	7.8% (4.4 m)	Fluo Orange	336		0904		2463
6	13.0% (7.4 m)	Scarlet	148		1703		2420
7	1.3% (0.7 m)	Amber Beige	122		0862		2336
8	22.0% (12.5 m)	California Blue	575		3902		2441
9	1.5% (0.9 m)	Aurifil Royal Purple	625		2500		2380
10	0.5% (0.3 m)	Black	717		1375		2411

Upper thread 56.7 m
 Bobbin 18.9 m

This documentation was created with Embird 2004 software registered to Shane Reynolds.
 For more information regarding Embird 2004 please visit web site at <http://www.embirdusa.com>.
 Note: These are the closest threads Embird 2004 was able to find. They might differ from the real colors in some cases.



Thread Charts

Thread	Consumption	Name	Brother	Country	Isacord	Polyest	Robison-Anton	Rayon
1	4.4% (2.4 m)	Dark Green/Yellow	446		0945		2229	
2	12.1% (6.7 m)	Bright Green	446		5934		2209	
3	5.9% (3.3 m)	Dark Yellow	354		0932		2602	
4	5.5% (3.1 m)	Cinnamon	706		0722		2273	
5	10.9% (6.1 m)	Scarlet	148		1703		2420	
6	3.7% (2.1 m)	Amber Beige	122		0862		2336	
7	2.3% (1.3 m)	GS Gray	745		4073		2585	
8	31.6% (17.6 m)	Rancho Brown	734		1565		2227	
9	9.8% (5.5 m)	California Blue	575		3902		2441	
10	5.1% (2.9 m)	Tropical Blue	575		3522		2442	
11	1.7% (0.9 m)	Red	024		1904		2418	
12	1.4% (0.8 m)	Green	446		0453		2214	
13	3.1% (1.7 m)	Fluo Orange	336		0904		2463	
14	2.4% (1.4 m)	Black	717		1375		2411	

Upper thread 55.8 m

Bobbin 18.6 m

This documentation was created with Embird 2004 software registered to Shane Reynolds.

For more information regarding Embird 2004 please visit web site at <http://www.embirdusa.com>.

Note: These are the closest threads Embird 2004 was able to find. They might differ from the real colors in some cases.



Thread Charts

Thread	Consumption	Name	Brother	Country Isacord	Polyest	Robison-Anton	Rayon
1	15.3% (8.5 m)	California Blue		575	3902		2441
2	9.6% (5.3 m)	Dark Green/Yellow		446	0945		2229
3	10.8% (6.0 m)	Dark Yellow		354	0932		2602
4	12.0% (6.6 m)	Scarlet		148	1703		2420
5	1.5% (0.8 m)	Cherokee Red		255	2224		2496
6	1.4% (0.7 m)	Amber Beige		122	0862		2336
7	17.0% (9.4 m)	Rancho Brown		734	1565		2227
8	0.5% (0.3 m)	Granite		734	2576		2535
9	9.9% (5.5 m)	Dark Grey		734	0112		2265
10	12.3% (6.8 m)	Aurifil Royal Purple		625	2500		2380
11	4.0% (2.2 m)	Ruby Glint		149	2320		2261
12	5.0% (2.8 m)	Fluo Orange		336	0904		2463
13	0.6% (0.3 m)	Black		717	1375		2411

Upper thread 55.1 m
Bobbin 18.4 m

This documentation was created with Embird 2004 software registered to Shane Reynolds.
For more information regarding Embird 2004 please visit web site at <http://www.embirdusa.com>.
Note: These are the closest threads Embird 2004 was able to find. They might differ from the real colors in some cases.



Thread Charts

Thread	Consumption	Name	Brother	Country	Isacord	Polyest	Robison-Anton	Rayon
1	12.7% (7.9 m)	Dark Green/Yellow	446		0945		2229	
2	8.1% (5.0 m)	Dark Yellow	354		0932		2602	
3	27.0% (16.7 m)	Green	446		0453		2214	
4	7.6% (4.7 m)	Rancho Brown	734		1565		2227	
5	3.1% (1.9 m)	Ruby Glint	149		2320		2261	
6	2.0% (1.2 m)	Dark Grey	734		0112		2265	
7	2.2% (1.4 m)	Amber Beige	122		0862		2336	
8	6.0% (3.7 m)	Tropical Blue	575		3522		2442	
9	11.3% (7.0 m)	California Blue	575		3902		2441	
10	3.3% (2.0 m)	Red	024		1904		2418	
11	14.3% (8.8 m)	Fluo Orange	336		0904		2463	
12	2.1% (1.3 m)	Scarlet	148		1703		2420	
13	0.2% (0.1 m)	Black	717		1375		2411	

Upper thread 61.7 m
 Bobbin 20.6 m

This documentation was created with Embird 2004 software registered to Shane Reynolds.
 For more information regarding Embird 2004 please visit web site at <http://www.embirdusa.com>.
 Note: These are the closest threads Embird 2004 was able to find. They might differ from the real colors in some cases.



Thread Charts

Thread	Consumption	Name	Brother	Country Isacord	Polyester	Robison-Anton	Rayon
1	9.0% (4.8 m)	Bright Green	485		5324		2410
2	6.9% (3.7 m)	Dark Yellow	354		0932		2602
3	24.4% (12.9 m)	California Blue	575		3902		2441
4	14.6% (7.7 m)	Green	446		0453		2214
5	8.3% (4.4 m)	Fluo Orange	336		0904		2463
6	3.1% (1.6 m)	Scarlet	148		1703		2420
7	1.4% (0.8 m)	Amber Beige	122		0862		2336
8	31.8% (16.8 m)	Rancho Brown	734		1565		2227
9	0.3% (0.1 m)	Black	717		1375		2411

Upper thread 52.9 m
 Bobbin 17.6 m

This documentation was created with Embird 2004 software registered to Shane Reynolds.
 For more information regarding Embird 2004 please visit web site at <http://www.embirdusa.com>.
 Note: These are the closest threads Embird 2004 was able to find. They might differ from the real colors in some cases.

