

Thread Charts

Thread	Consumption	Name	Brother	Country Isacord	Polyester	Madeira Rayon	Robison-Rayon
1	1.7% (0.5 m)	Black	100		0020	1008	2552
2	10.2% (3.2 m)	Golden Yellow	336		0904	1137	2463
3	27.7% (8.5 m)	Lime Green	446		5833	1169	2457
4	24.7% (7.6 m)	Nutmeg	224		1725	1257	2231
5	9.8% (3.0 m)	Fleece Green	485		5324	1051	2410
6	7.5% (2.3 m)	Medium Brown	734		1565	1308	2227
7	2.5% (0.8 m)	Aqua Gray	745		2674	1011	2592
8	3.3% (1.0 m)	Colonial Blue	575		3902	1096	2388
9	12.6% (3.9 m)	California Blue	575		3902	1176	2441

Upper thread 30.8 m
 Bobbin 10.3 m

This documentation was created with Embird 2004 software registered to Shane Reynolds.
 For more information regarding Embird 2004 please visit web site at <http://www.embirdusa.com>.
 Note: These are the closest threads Embird 2004 was able to found. They might differ from the real colors in some cases.

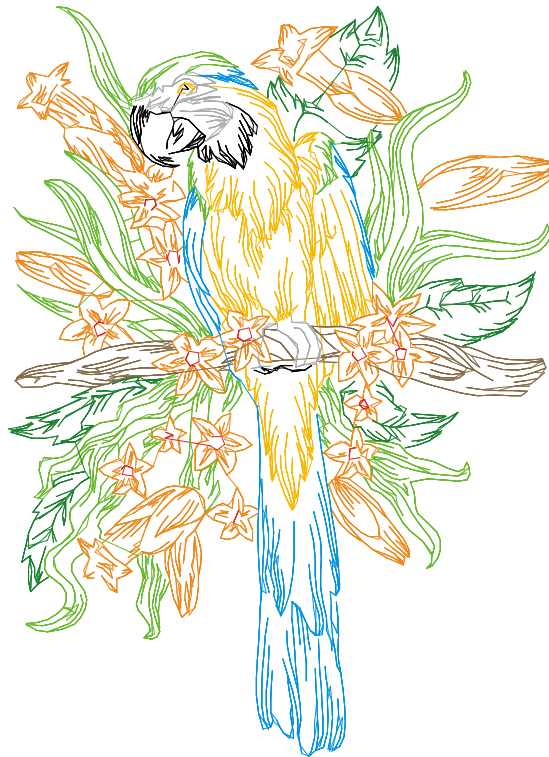


Thread Charts

Thread	Consumption	Name	Brother	Country	Isacord	Polyester	Madeira Rayon	Robison-Anton	Rayon
1	2.8% (1.0 m)	Black	100		0020		1008		2552
2	13.0% (4.5 m)	Golden Yellow	336		0904		1137		2463
3	27.0% (9.3 m)	Golden Poppy	354		1332		1278		2327
4	1.9% (0.7 m)	Rust	024		1904		1037		2420
5	27.1% (9.4 m)	Lime Green	446		5833		1169		2457
6	9.2% (3.2 m)	Fleece Green	485		5324		1051		2410
7	5.8% (2.0 m)	Medium Brown	734		1565		1308		2227
8	2.2% (0.8 m)	Aqua Gray	745		2674		1011		2592
9	11.0% (3.8 m)	California Blue	575		3902		1176		2441

Upper thread 34.6 m
Bobbin 11.5 m

This documentation was created with Embird 2004 software registered to Shane Reynolds.
For more information regarding Embird 2004 please visit web site at <http://www.embirdusa.com>.
Note: These are the closest threads Embird 2004 was able to found. They might differ from the real colors in some cases.



Thread Charts

Thread	Consumption	Name	Brother	Country	Isacord	Polyester	Madeira	Rayon	Robison-Anton	Rayon
1	2.4% (0.8 m)	Black		100		0020		1008		2552
2	4.8% (1.6 m)	Golden Yellow		336		0904		1137		2463
3	18.3% (6.2 m)	Rust		024		1904		1037		2420
4	19.2% (6.5 m)	Lime Green		446		5833		1169		2457
5	10.4% (3.5 m)	Fleece Green		485		5324		1051		2410
6	5.9% (2.0 m)	Medium Brown		734		1565		1308		2227
7	7.5% (2.6 m)	Dark Blue		575		3600		1177		2442
8	0.8% (0.3 m)	Aqua Gray		745		2674		1011		2592
9	29.5% (10.0 m)	Wild Plum		623		3251		1311		2424
10	1.1% (0.4 m)	Pale Lilac		623		0142		1198		2286

Upper thread 33.8 m
Bobbin 11.3 m

This documentation was created with Embird 2004 software registered to Shane Reynolds.
For more information regarding Embird 2004 please visit web site at <http://www.embirdusa.com>.
Note: These are the closest threads Embird 2004 was able to found. They might differ from the real colors in some cases.



Thread Charts

Thread	Consumption	Name	Brother	Country	Isacord	Polyester	Madeira	Rayon	Robison-Anton	Rayon
1	2.7% (1.1 m)	Black	100		0020		1008			2552
2	9.6% (4.0 m)	Golden Yellow	336		0904		1137			2463
3	14.3% (5.9 m)	Rust	024		1904		1037			2420
4	26.6% (11.1 m)	Lime Green	446		5833		1169			2457
5	11.1% (4.6 m)	Fleece Green	485		5324		1051			2410
6	4.3% (1.8 m)	Medium Brown	734		1565		1308			2227
7	5.0% (2.1 m)	Aqua Gray	745		2674		1011			2592
8	10.8% (4.5 m)	Colonial Blue	575		3902		1096			2388
9	15.6% (6.5 m)	California Blue	575		3902		1176			2441

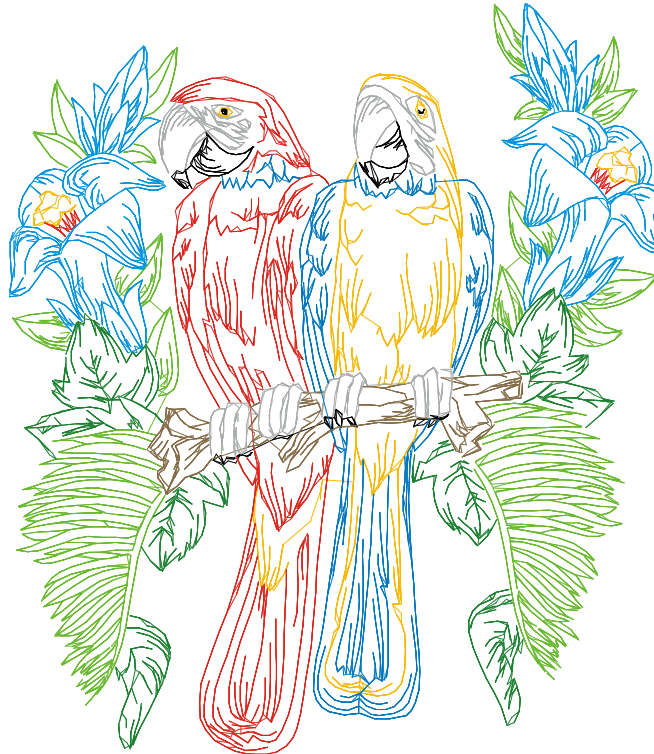
Upper thread 41.6 m

Bobbin 13.9 m

This documentation was created with Embird 2004 software registered to Shane Reynolds.

For more information regarding Embird 2004 please visit web site at <http://www.embirdusa.com>.

Note: These are the closest threads Embird 2004 was able to found. They might differ from the real colors in some cases.



Thread Charts

Thread	Consumption	Name	Brother	Country	Isacord	Polyester	Madeira Rayon	Robison-Anton	Rayon
1	1.0% (0.3 m)	Black		100		0020	1008		2552
2	12.5% (3.6 m)	Golden Yellow		336		0904	1137		2463
3	3.6% (1.0 m)	Golden Poppy		354		1332	1278		2327
4	26.8% (7.6 m)	Rust		024		1904	1037		2420
5	14.7% (4.2 m)	Lime Green		446		5833	1169		2457
6	29.7% (8.5 m)	Fleece Green		485		5324	1051		2410
7	6.5% (1.8 m)	Medium Brown		734		1565	1308		2227
8	5.1% (1.4 m)	Aqua Gray		745		2674	1011		2592

Upper thread 28.5 m
Bobbin 9.5 m

This documentation was created with Embird 2004 software registered to Shane Reynolds.
For more information regarding Embird 2004 please visit web site at <http://www.embirdusa.com>.
Note: These are the closest threads Embird 2004 was able to found. They might differ from the real colors in some cases.

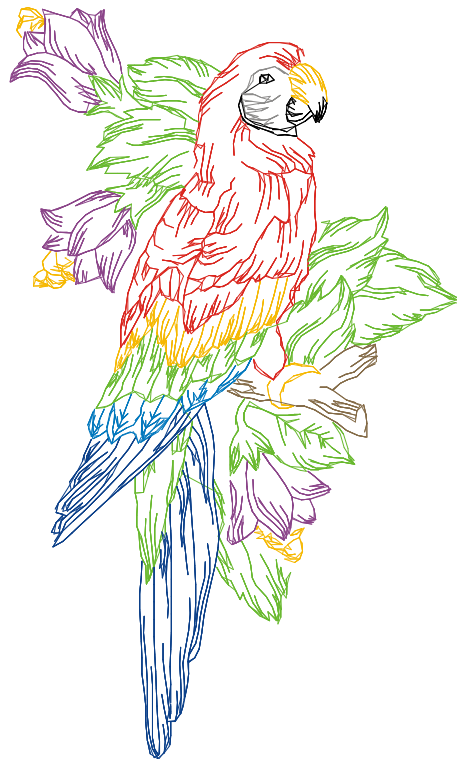


Thread Charts

Thread	Consumption	Name	Brother	Country	Isacord	Polyester	Madeira Rayon	Robison-Anton	Rayon
1	1.8% (0.4 m)	Black		100		0020	1008		2552
2	10.7% (2.1 m)	Golden Yellow		336		0904	1137		2463
3	15.3% (3.0 m)	Rust		024		1904	1037		2420
4	33.1% (6.4 m)	Lime Green		446		5833	1169		2457
5	3.1% (0.6 m)	Medium Brown		734		1565	1308		2227
6	17.2% (3.3 m)	Blue		575		3611	1167		2436
7	14.0% (2.7 m)	Easter Purple		635		3211	1263		2426
8	1.2% (0.2 m)	Medium Grey		706		0152	1040		2484
9	3.7% (0.7 m)	Colonial Blue		575		3902	1096		2388

Upper thread 19.4 m
 Bobbin 6.5 m

This documentation was created with Embird 2004 software registered to Shane Reynolds.
 For more information regarding Embird 2004 please visit web site at <http://www.embirdusa.com>.
 Note: These are the closest threads Embird 2004 was able to found. They might differ from the real colors in some cases.



Thread Charts

Thread	Consumption	Name	Brother	Country	Isacord	Polyester	Madeira Rayon	Robison-Anton	Rayon
1	1.9% (0.5 m)	Black		100		0020	1008		2552
2	7.2% (1.9 m)	Deep Gold		335		0904	1025		2556
3	17.3% (4.6 m)	Nut		354		1332	1372		2602
4	17.6% (4.7 m)	Green		485		5324	1051		2410
5	17.8% (4.7 m)	Emerald		446		5633	1101		2214
6	8.3% (2.2 m)	Bagby Green		734		1565	1228		2575
7	29.9% (8.0 m)	Empire Blue		015		3902	1029		2529

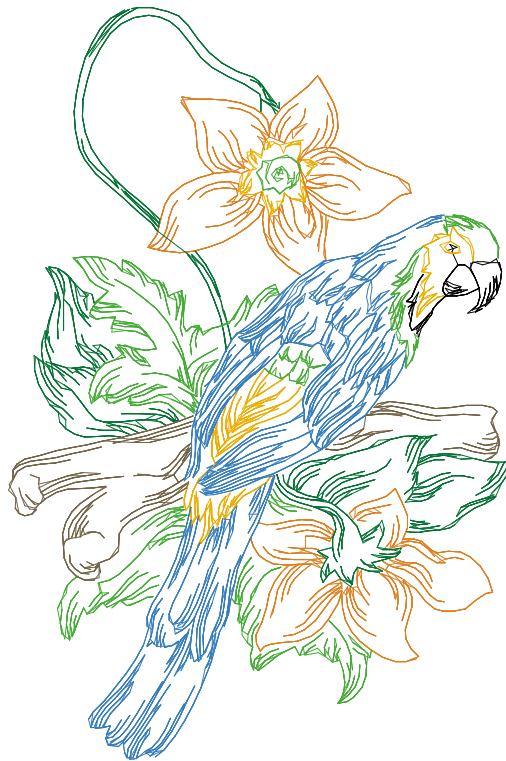
Upper thread 26.6 m

Bobbin 8.9 m

This documentation was created with Embird 2004 software registered to Shane Reynolds.

For more information regarding Embird 2004 please visit web site at <http://www.embirdusa.com>.

Note: These are the closest threads Embird 2004 was able to found. They might differ from the real colors in some cases.



Thread Charts

Thread	Consumption	Name	Brother	Country	Isacord	Polyester	Madeira	Rayon	Robison-Anton	Rayon
1	1.2% (0.3 m)	Black		100		0020		1008		2552
2	8.0% (2.0 m)	Deep Gold		335		0904		1025		2556
3	19.4% (5.0 m)	Red		024		1904		1221		2205
4	0.7% (0.2 m)	Nut		354		1332		1372		2602
5	26.0% (6.6 m)	Green		485		5324		1051		2410
6	11.7% (3.0 m)	Emerald		446		5633		1101		2214
7	10.9% (2.8 m)	Bagby Green		734		1565		1228		2575
8	4.6% (1.2 m)	Dark Blue		575		3611		1364		2436
9	0.2% (0.1 m)	Pale Grey		745		4073		1118		2585
10	0.4% (0.1 m)	Silver		745		2674		1011		2592
11	16.9% (4.3 m)	Empire Blue		015		3902		1029		2529

Upper thread 25.6 m

Bobbin 8.5 m

This documentation was created with Embird 2004 software registered to Shane Reynolds.

For more information regarding Embird 2004 please visit web site at <http://www.embirdusa.com>.

Note: These are the closest threads Embird 2004 was able to found. They might differ from the real colors in some cases.



Thread Charts

Thread	Consumption	Name	Brother	Country	Isacord	Polyester	Madeira Rayon	Robison-Anton	Rayon
1	1.0% (0.3 m)	Black	100		0020		1008		2552
2	17.0% (4.8 m)	Deep Gold	335		0904		1025		2556
3	13.4% (3.8 m)	Red	024		1904		1221		2205
4	31.8% (9.1 m)	Green	485		5324		1051		2410
5	11.0% (3.1 m)	Emerald	446		5633		1101		2214
6	3.2% (0.9 m)	Bagby Green	734		1565		1228		2575
7	11.0% (3.1 m)	Deep Violet	635		2810		1263		2490
8	10.2% (2.9 m)	Dark Blue	575		3611		1364		2436
9	1.4% (0.4 m)	Pale Grey	745		4073		1118		2585

Upper thread 28.5 m
 Bobbin 9.5 m

This documentation was created with Embird 2004 software registered to Shane Reynolds.
 For more information regarding Embird 2004 please visit web site at <http://www.embirdusa.com>.
 Note: These are the closest threads Embird 2004 was able to found. They might differ from the real colors in some cases.

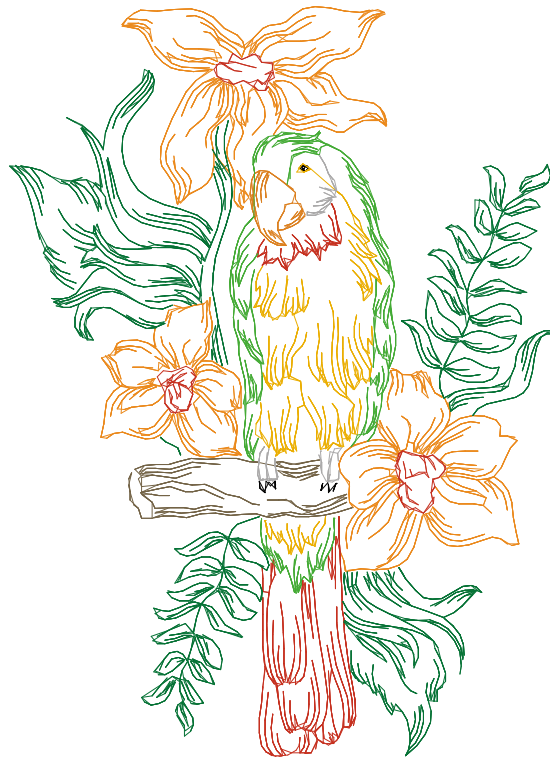


Thread Charts

Thread	Consumption	Name	Brother	Country	Isacord	Polyester	Madeira	Rayon	Robison-Anton	Rayon
1	0.8% (0.2 m)	Black		100		0020		1008		2552
2	9.0% (2.5 m)	Deep Gold		335		0904		1025		2556
3	25.0% (6.8 m)	Golden Poppy		354		1332		1278		2327
4	11.3% (3.1 m)	Red		024		1904		1221		2205
5	1.7% (0.5 m)	Nut		354		1332		1372		2602
6	36.5% (10.0 m)	Green		485		5324		1051		2410
7	9.5% (2.6 m)	Emerald		446		5633		1101		2214
8	4.6% (1.3 m)	Bagby Green		734		1565		1228		2575
9	1.5% (0.4 m)	Silver		745		2674		1011		2592

Upper thread 27.3 m
 Bobbin 9.1 m

This documentation was created with Embird 2004 software registered to Shane Reynolds.
 For more information regarding Embird 2004 please visit web site at <http://www.embirdusa.com>.
 Note: These are the closest threads Embird 2004 was able to found. They might differ from the real colors in some cases.



Thread Charts

Thread	Consumption	Name	Brother	Country	Isacord	Polyester	Madeira Rayon	Robison-Anton	Rayon
1	2.0% (0.5 m)	Black	100		0020		1008		2552
2	4.5% (1.2 m)	Deep Gold	335		0904		1025		2556
3	31.3% (8.1 m)	Red	024		1904		1221		2205
4	32.1% (8.3 m)	Emerald	446		5633		1101		2214
5	14.3% (3.7 m)	Bagby Green	734		1565		1228		2575
6	11.9% (3.1 m)	Deep Violet	635		2810		1263		2490
7	2.4% (0.6 m)	Pale Grey	745		4073		1118		2585
8	1.4% (0.4 m)	MarineBlue	575		3842		1042		2302

Upper thread 26.0 m
Bobbin 8.7 m

This documentation was created with Embird 2004 software registered to Shane Reynolds.
For more information regarding Embird 2004 please visit web site at <http://www.embirdusa.com>.
Note: These are the closest threads Embird 2004 was able to found. They might differ from the real colors in some cases.



Thread Charts

Thread	Consumption	Name	Brother	Country	Isacord	Polyester	Madeira	Rayon	Robison-Anton	Rayon
1	0.8% (0.2 m)	Black	100		0020		1008			2552
2	3.1% (0.7 m)	Deep Gold	335		0904		1025			2556
3	11.1% (2.6 m)	Red	024		1904		1221			2205
4	4.6% (1.1 m)	Lime Green	446		5833		1169			2457
5	17.6% (4.1 m)	Green	057		5324		1051			2240
6	5.1% (1.2 m)	Bagby Green	734		1565		1228			2575
7	6.5% (1.5 m)	Ruby Glint	149		2300		1110			2416
8	1.6% (0.4 m)	Pale Grey	745		4073		1118			2585
9	26.9% (6.2 m)	MarineBlue	575		3842		1042			2302
10	22.7% (5.2 m)	Grape	624		4073		1264			2406

Upper thread 23.1 m
Bobbin 7.7 m

This documentation was created with Embird 2004 software registered to Shane Reynolds.
For more information regarding Embird 2004 please visit web site at <http://www.embirdusa.com>.
Note: These are the closest threads Embird 2004 was able to found. They might differ from the real colors in some cases.

