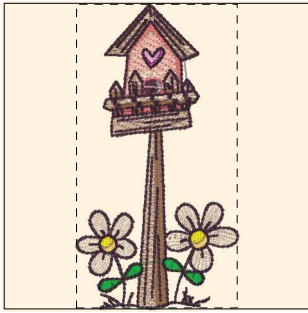


Printed 2/26/2010



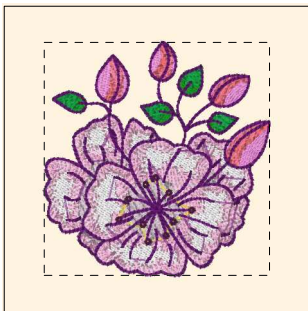
- 1. Dark Peach (Sul-R:1020)
- 2. Coral Reef (Sul-R:1258)
- 3. Lt. Pink (Sul-R:1115)
- 4. Hot Pink (Sul-R:1109)
- 5. Dk. Chestnut (Sul-R:1189)
- 6. Toast (Sul-R:1266)
- 7. Coral Reef (Sul-R:1258)
- 8. Mimosa Yellow (Sul-R:1187)
- 9. (Sul-R:622)
- 10. Ivy Green (Sul-R:1277)
- 11. Bright Green (Sul-R:1278)
- 12. Dk. Chestnut (Sul-R:1189)
- 13. Bright White (Sul-R:1001)

Birdhouse_01-4x4.dst
2.07x3.91 inches; 10,522 stitches
13 thread changes; 11 colors



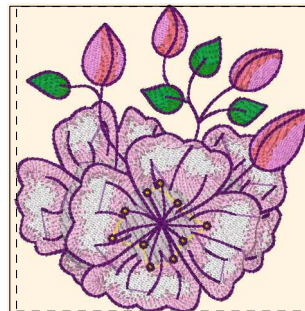
- 1. Dark Peach (Sul-R:1020)
- 2. Coral Reef (Sul-R:1258)
- 3. Lt. Pink (Sul-R:1115)
- 4. Hot Pink (Sul-R:1109)
- 5. Dk. Chestnut (Sul-R:1189)
- 6. Toast (Sul-R:1266)
- 7. Coral Reef (Sul-R:1258)
- 8. Mimosa Yellow (Sul-R:1187)
- 9. (Sul-R:622)
- 10. Ivy Green (Sul-R:1277)
- 11. Bright Green (Sul-R:1278)
- 12. Dk. Chestnut (Sul-R:1189)
- 13. Bright White (Sul-R:1001)

Birdhouse_01-5x7.dst
3.17x6.00 inches; 18,124 stitches
13 thread changes; 11 colors



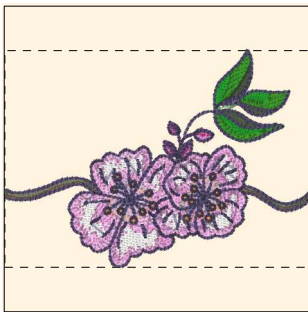
- 1. Ivy Green (Sul-R:1277)
- 2. Bright Green (Sul-R:1278)
- 3. Sweet Pink (Sul-R:1256)
- 4. Dark Peach (Sul-R:1020)
- 5. Soft White (Sul-R:1002)
- 6. Lt. Mauve (Sul-R:1108)
- 7. Gray Khaki (Sul-R:1321)
- 8. Mimosa Yellow (Sul-R:1187)
- 9. Deep Orchid (Sul-R:1255)

Blossom_01-3x3.dst
2.90x3.00 inches; 13,486 stitches
9 thread changes; 9 colors



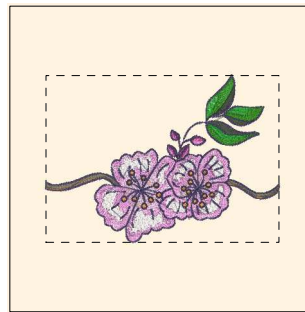
- 1. Ivy Green (Sul-R:1277)
- 2. Bright Green (Sul-R:1278)
- 3. Sweet Pink (Sul-R:1256)
- 4. Dark Peach (Sul-R:1020)
- 5. Soft White (Sul-R:1002)
- 6. Lt. Mauve (Sul-R:1108)
- 7. Gray Khaki (Sul-R:1321)
- 8. Mimosa Yellow (Sul-R:1187)
- 9. Deep Orchid (Sul-R:1255)

Blossom_01-4x4.dst
3.76x3.93 inches; 19,430 stitches
9 thread changes; 9 colors



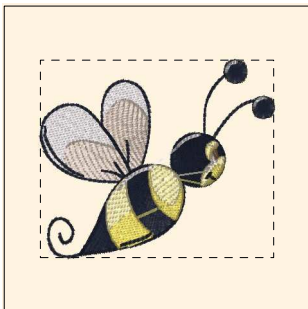
- 1. Toast (Sul-R:1266)
- 2. Khaki (Sul-R:1212)
- 3. Ivy Green (Sul-R:1277)
- 4. Grass Green (Sul-R:1049)
- 5. Hedge Green (Sul-R:1272)
- 6. Sweet Pink (Sul-R:1256)
- 7. Deep Rose (Sul-R:1511)
- 8. Bright White (Sul-R:1001)
- 9. Bright Pink (Sul-R:1224)
- 10. Steel Gray (Sul-R:1011)
- 11. Apricot (Sul-R:1239)
- 12. Dk. Plum (Sul-R:1298)

Blossom_02-4x4.dst
3.92x2.80 inches; 12,842 stitches
12 thread changes; 12 colors



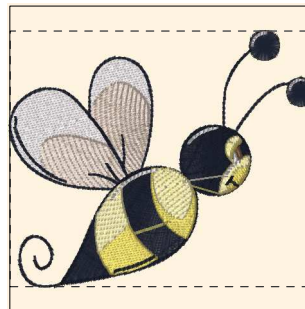
- 1. Toast (Sul-R:1266)
- 2. Khaki (Sul-R:1212)
- 3. Ivy Green (Sul-R:1277)
- 4. Grass Green (Sul-R:1049)
- 5. Hedge Green (Sul-R:1272)
- 6. Sweet Pink (Sul-R:1256)
- 7. Deep Rose (Sul-R:1511)
- 8. Bright White (Sul-R:1001)
- 9. Bright Pink (Sul-R:1224)
- 10. Steel Gray (Sul-R:1011)
- 11. Apricot (Sul-R:1239)
- 12. Dk. Plum (Sul-R:1298)

Blossom_02-5x7.dst
6.00x4.30 inches; 22,050 stitches
12 thread changes; 12 colors



- 1. Lt. Silver (Sul-R:1236)
- 2. Deep Ecru (Sul-R:1149)
- 3. Blue Black (Sul-R:1182)
- 4. Maize Yellow (Sul-R:1167)
- 5. Pale Yellow (Sul-R:1061)
- 6. Lt. Silver (Sul-R:1236)
- 7. Toast (Sul-R:1266)
- 8. Blue Black (Sul-R:1182)

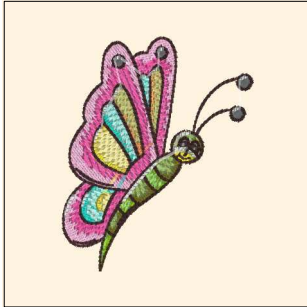
Bumble_bee_01-3x3.dst
3.01x2.54 inches; 7,082 stitches
8 thread changes; 6 colors



- 1. Lt. Silver (Sul-R:1236)
- 2. Deep Ecru (Sul-R:1149)
- 3. Blue Black (Sul-R:1182)
- 4. Maize Yellow (Sul-R:1167)
- 5. Pale Yellow (Sul-R:1061)
- 6. Lt. Silver (Sul-R:1236)
- 7. Toast (Sul-R:1266)
- 8. Blue Black (Sul-R:1182)

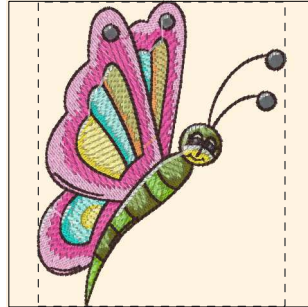
Bumble_bee_01-4x4.dst
3.93x3.30 inches; 10,494 stitches
8 thread changes; 6 colors

Printed 2/26/2010



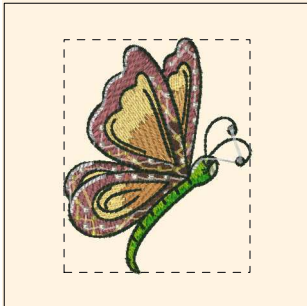
- 1. Lt. Pink (Sul-R:1115)
- 2. Deep Rose (Sul-R:1511)
- 3. Apricot (Sul-R:1239)
- 4. Chartreuse (Sul-R:1322)
- 5. Aqua (Sul-R:1288)
- 6. Pale Green (Sul-R:1331)
- 7. Sun Yellow (Sul-R:1124)
- 8. Pale Yellow (Sul-R:1061)
- 9. Med. Dk. Khaki (Sul-R:1040)
- 10. Mahogany (Sul-R:1247)
- 11. Bright White (Sul-R:1001)
- 12. Avocado (Sul-R:1177)
- 13. Lt. Grass Green (Sul-R:1100)
- 14. Lt. Army Green (Sul-R:1156)
- 15. Chartreuse (Sul-R:1322)
- 16. Sun Yellow (Sul-R:1124)
- 17. Pale Green (Sul-R:1331)
- 18. Cobalt Blue (Sul-R:526)
- 19. Med. Dk. Khaki (Sul-R:1040)
- 20. Bright White (Sul-R:1001)
- 21. Mahogany (Sul-R:1247)
- 22. Bright White (Sul-R:1001)

Butterfly_01-3x3.dst
2.43x3.00 inches; 9,991 stitches
22 thread changes; 15 colors



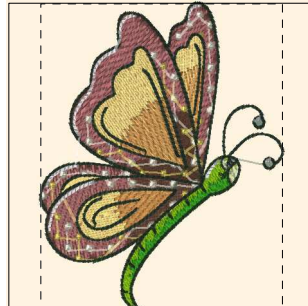
- 1. Lt. Pink (Sul-R:1115)
- 2. Deep Rose (Sul-R:1511)
- 3. Apricot (Sul-R:1239)
- 4. Chartreuse (Sul-R:1322)
- 5. Aqua (Sul-R:1288)
- 6. Pale Green (Sul-R:1331)
- 7. Sun Yellow (Sul-R:1124)
- 8. Pale Yellow (Sul-R:1061)
- 9. Med. Dk. Khaki (Sul-R:1040)
- 10. Mahogany (Sul-R:1247)
- 11. Bright White (Sul-R:1001)
- 12. Avocado (Sul-R:1177)
- 13. Lt. Grass Green (Sul-R:1100)
- 14. Lt. Army Green (Sul-R:1156)
- 15. Chartreuse (Sul-R:1322)
- 16. Sun Yellow (Sul-R:1124)
- 17. Pale Green (Sul-R:1331)
- 18. Cobalt Blue (Sul-R:526)
- 19. Med. Dk. Khaki (Sul-R:1040)
- 20. Bright White (Sul-R:1001)
- 21. Mahogany (Sul-R:1247)
- 22. Bright White (Sul-R:1001)

Butterfly_01-4x4.dst
3.18x3.92 inches; 14,401 stitches
22 thread changes; 15 colors



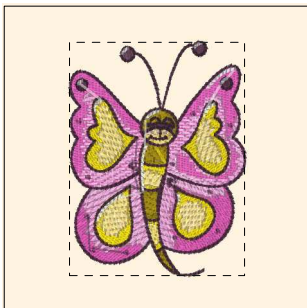
- 1. Sable Brown (Sul-R:1186)
- 2. Dewberry (Sul-R:1304)
- 3. Tawny Tan (Sul-R:1055)
- 4. Tan (Sul-R:1126)
- 5. Avocado (Sul-R:1177)
- 6. Ivy Green (Sul-R:1277)
- 7. Avocado (Sul-R:1177)
- 8. Pale Yellow-Green (Sul-R:1063)
- 9. Cobalt Blue (Sul-R:526)
- 10. Khaki (Sul-R:1212)
- 11. Bright White (Sul-R:1001)
- 12. Maize Yellow (Sul-R:1167)
- 13. Dk. Khaki (Sul-R:1103)
- 14. Bright White (Sul-R:1001)

Butterfly_02-3x3.dst
2.40x3.00 inches; 10,722 stitches
14 thread changes; 12 colors



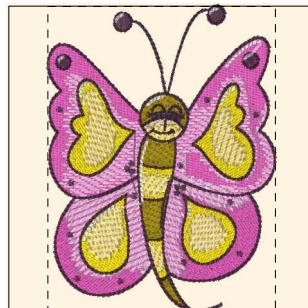
- 1. Sable Brown (Sul-R:1186)
- 2. Dewberry (Sul-R:1304)
- 3. Tawny Tan (Sul-R:1055)
- 4. Tan (Sul-R:1126)
- 5. Avocado (Sul-R:1177)
- 6. Ivy Green (Sul-R:1277)
- 7. Avocado (Sul-R:1177)
- 8. Pale Yellow-Green (Sul-R:1063)
- 9. Cobalt Blue (Sul-R:526)
- 10. Khaki (Sul-R:1212)
- 11. Bright White (Sul-R:1001)
- 12. Maize Yellow (Sul-R:1167)
- 13. Dk. Khaki (Sul-R:1103)
- 14. Bright White (Sul-R:1001)

Butterfly_02-4x4.dst
3.12x3.92 inches; 15,266 stitches
14 thread changes; 12 colors



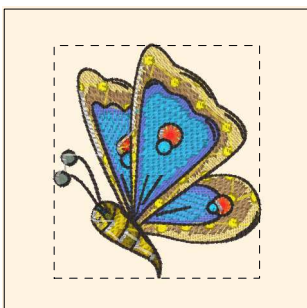
- 1. Hot Pink (Sul-R:1109)
- 2. Pastel Pink (Sul-R:1225)
- 3. Yellow (Sul-R:1023)
- 4. (Sul-R:520)
- 5. Dk. Chestnut (Sul-R:1189)
- 6. Gold Green (Sul-R:1227)
- 7. (Sul-R:1262)
- 8. Yellow (Sul-R:1023)
- 9. (Sul-R:520)
- 10. Pastel Pink (Sul-R:1225)
- 11. Cobalt Blue (Sul-R:526)
- 12. Bright White (Sul-R:1001)
- 13. Dk. Chestnut (Sul-R:1189)
- 14. Bright White (Sul-R:1001)

Butterfly_03-3x3.dst
2.26x3.01 inches; 12,668 stitches
14 thread changes; 9 colors



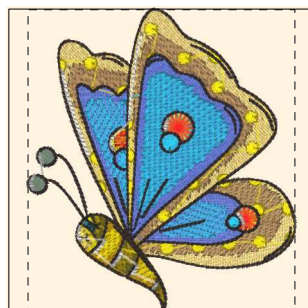
- 1. Hot Pink (Sul-R:1109)
- 2. Pastel Pink (Sul-R:1225)
- 3. Yellow (Sul-R:1023)
- 4. (Sul-R:520)
- 5. Dk. Chestnut (Sul-R:1189)
- 6. Gold Green (Sul-R:1227)
- 7. (Sul-R:1262)
- 8. Yellow (Sul-R:1023)
- 9. (Sul-R:520)
- 10. Pastel Pink (Sul-R:1225)
- 11. Cobalt Blue (Sul-R:526)
- 12. Bright White (Sul-R:1001)
- 13. Dk. Chestnut (Sul-R:1189)
- 14. Bright White (Sul-R:1001)

Butterfly_03-4x4.dst
2.93x3.93 inches; 18,611 stitches
14 thread changes; 9 colors



- 1. Tawny Tan (Sul-R:1055)
- 2. Toast (Sul-R:1266)
- 3. Dk. Periwinkle (Sul-R:1226)
- 4. Turquoise (Sul-R:1095)
- 5. Mimosa Yellow (Sul-R:1187)
- 6. (Sul-R:1319)
- 7. Dk. Periwinkle (Sul-R:1226)
- 8. Turquoise (Sul-R:1095)
- 9. Mimosa Yellow (Sul-R:1187)
- 10. Dk. Tawny Brown (Sul-R:1059)
- 11. Drab Green (Sul-R:1228)
- 12. (Sul-R:1262)
- 13. Temple Gold (Sul-R:1159)
- 14. Mimosa Yellow (Sul-R:1187)
- 15. Yellow (Sul-R:1023)
- 16. Tawny Tan (Sul-R:1055)
- 17. Cobalt Blue (Sul-R:526)
- 18. Khaki (Sul-R:1212)
- 19. Turquoise (Sul-R:1095)
- 20. Dk. Tawny Brown (Sul-R:1059)
- 21. Bright White (Sul-R:1001)

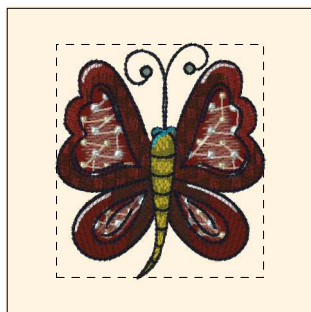
Butterfly_04-3x3.dst
2.65x3.00 inches; 12,758 stitches
21 thread changes; 14 colors



- 1. Tawny Tan (Sul-R:1055)
- 2. Toast (Sul-R:1266)
- 3. Dk. Periwinkle (Sul-R:1226)
- 4. Turquoise (Sul-R:1095)
- 5. Mimosa Yellow (Sul-R:1187)
- 6. (Sul-R:1319)
- 7. Dk. Periwinkle (Sul-R:1226)
- 8. Turquoise (Sul-R:1095)
- 9. Mimosa Yellow (Sul-R:1187)
- 10. Dk. Tawny Brown (Sul-R:1059)
- 11. Drab Green (Sul-R:1228)
- 12. (Sul-R:1262)
- 13. Temple Gold (Sul-R:1159)
- 14. Mimosa Yellow (Sul-R:1187)
- 15. Yellow (Sul-R:1023)
- 16. Tawny Tan (Sul-R:1055)
- 17. Cobalt Blue (Sul-R:526)
- 18. Khaki (Sul-R:1212)
- 19. Turquoise (Sul-R:1095)
- 20. Dk. Tawny Brown (Sul-R:1059)
- 21. Bright White (Sul-R:1001)

Butterfly_04-4x4.dst
3.44x3.92 inches; 18,344 stitches
21 thread changes; 14 colors

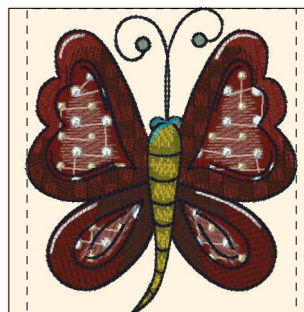
Printed 2/26/2010



- 1. (Sul-R:1323)
- 2. Cognac (Sul-R:1264)
- 3. (Sul-R:1323)
- 4. Cognac (Sul-R:1264)
- 5. (Sul-R:1269)
- 6. Pale Yellow (Sul-R:1061)
- 7. Pale Green (Sul-R:1331)
- 8. Blue Black (Sul-R:1182)
- 9. Bright White (Sul-R:1001)
- 10. Lt. Army Green (Sul-R:1156)
- 11. (Sul-R:1244)
- 12. Khaki (Sul-R:1212)
- 13. Blue Black (Sul-R:1182)
- 14. Turquoise (Sul-R:1095)

Butterfly_05-3x3.dst

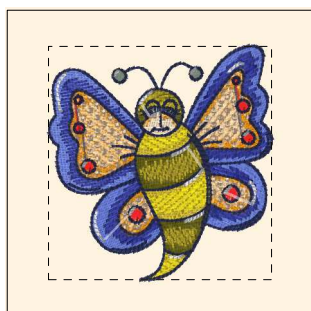
2.67x3.00 inches; 14,809 stitches
14 thread changes; 11 colors



- 1. (Sul-R:1323)
- 2. Cognac (Sul-R:1264)
- 3. (Sul-R:1323)
- 4. Cognac (Sul-R:1264)
- 5. (Sul-R:1269)
- 6. Pale Yellow (Sul-R:1061)
- 7. Pale Green (Sul-R:1331)
- 8. Blue Black (Sul-R:1182)
- 9. Bright White (Sul-R:1001)
- 10. Lt. Army Green (Sul-R:1156)
- 11. (Sul-R:1244)
- 12. Khaki (Sul-R:1212)
- 13. Blue Black (Sul-R:1182)
- 14. Turquoise (Sul-R:1095)

Butterfly_05-4x4.dst

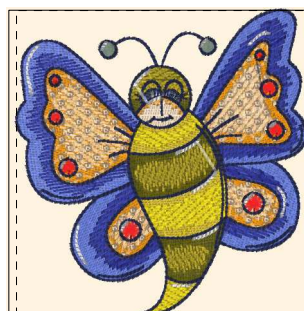
3.47x3.93 inches; 21,551 stitches
14 thread changes; 11 colors



- 1. Dk. Periwinkle (Sul-R:1226)
- 2. Deep Nassau Blue (Sul-R:1293)
- 3. Orange Sunrise (Sul-R:1238)
- 4. (Sul-R:520)
- 5. Pastel Peach (Sul-R:1017)
- 6. Red Jubilee (Sul-R:1263)
- 7. (Sul-R:1319)
- 8. Med. Navy (Sul-R:1197)
- 9. (Sul-R:1244)
- 10. Mimosa Yellow (Sul-R:1187)
- 11. Med. Army Green (Sul-R:1173)
- 12. (Sul-R:1244)
- 13. (Sul-R:520)
- 14. Orange Sunrise (Sul-R:1238)
- 15. Dk. Periwinkle (Sul-R:1226)
- 16. Khaki (Sul-R:1212)
- 17. Bright White (Sul-R:1001)
- 18. Med. Navy (Sul-R:1197)
- 19. Bright White (Sul-R:1001)

Butterfly_06-3x3.dst

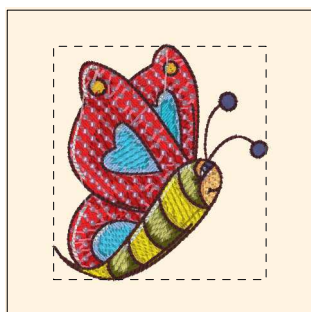
2.87x3.01 inches; 16,877 stitches
19 thread changes; 13 colors



- 1. Dk. Periwinkle (Sul-R:1226)
- 2. Deep Nassau Blue (Sul-R:1293)
- 3. Orange Sunrise (Sul-R:1238)
- 4. (Sul-R:520)
- 5. Pastel Peach (Sul-R:1017)
- 6. Red Jubilee (Sul-R:1263)
- 7. (Sul-R:1319)
- 8. Med. Navy (Sul-R:1197)
- 9. (Sul-R:1244)
- 10. Mimosa Yellow (Sul-R:1187)
- 11. Med. Army Green (Sul-R:1173)
- 12. (Sul-R:1244)
- 13. (Sul-R:520)
- 14. Orange Sunrise (Sul-R:1238)
- 15. Dk. Periwinkle (Sul-R:1226)
- 16. Khaki (Sul-R:1212)
- 17. Bright White (Sul-R:1001)
- 18. Med. Navy (Sul-R:1197)
- 19. Bright White (Sul-R:1001)

Butterfly_06-4x4.dst

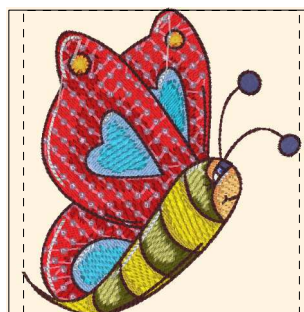
3.74x3.93 inches; 24,269 stitches
19 thread changes; 13 colors



- 1. (Sul-R:1319)
- 2. Red Jubilee (Sul-R:1263)
- 3. Baby Blue (Sul-R:1028)
- 4. Turquoise (Sul-R:1095)
- 5. Lt. Pink (Sul-R:1115)
- 6. Apricot (Sul-R:1239)
- 7. (Sul-R:1244)
- 8. Med. Chestnut (Sul-R:1214)
- 9. Bright White (Sul-R:1001)
- 10. (Sul-R:1244)
- 11. Mimosa Yellow (Sul-R:1187)
- 12. Med. Army Green (Sul-R:1173)
- 13. Lemon Yellow (Sul-R:1067)
- 14. Apricot (Sul-R:1239)
- 15. Tawny Tan (Sul-R:1055)
- 16. Cobalt Blue (Sul-R:526)
- 17. Bright White (Sul-R:1001)
- 18. Deep Slate Gray (Sul-R:1294)
- 19. Med. Chestnut (Sul-R:1214)

Butterfly_07-3x3.dst

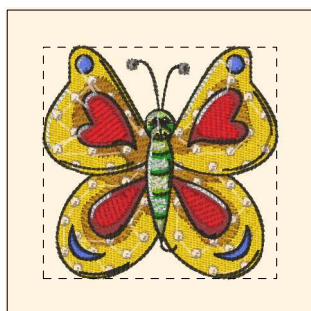
2.74x3.01 inches; 13,325 stitches
19 thread changes; 15 colors



- 1. (Sul-R:1319)
- 2. Red Jubilee (Sul-R:1263)
- 3. Baby Blue (Sul-R:1028)
- 4. Turquoise (Sul-R:1095)
- 5. Lt. Pink (Sul-R:1115)
- 6. Apricot (Sul-R:1239)
- 7. (Sul-R:1244)
- 8. Med. Chestnut (Sul-R:1214)
- 9. Bright White (Sul-R:1001)
- 10. (Sul-R:1244)
- 11. Mimosa Yellow (Sul-R:1187)
- 12. Med. Army Green (Sul-R:1173)
- 13. Lemon Yellow (Sul-R:1067)
- 14. Apricot (Sul-R:1239)
- 15. Tawny Tan (Sul-R:1055)
- 16. Cobalt Blue (Sul-R:526)
- 17. Bright White (Sul-R:1001)
- 18. Deep Slate Gray (Sul-R:1294)
- 19. Med. Chestnut (Sul-R:1214)

Butterfly_07-4x4.dst

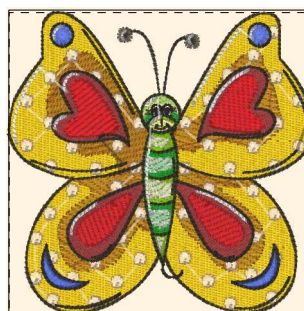
3.56x3.93 inches; 19,407 stitches
19 thread changes; 15 colors



- 1. (Sul-R:1261)
- 2. (Sul-R:1320)
- 3. (Sul-R:520)
- 4. Med. Maple (Sul-R:1216)
- 5. (Sul-R:1319)
- 6. Cobalt Blue (Sul-R:526)
- 7. Dk. Periwinkle (Sul-R:1226)
- 8. Ivy Green (Sul-R:1277)
- 9. Lt. Avocado (Sul-R:1209)
- 10. Avocado (Sul-R:1177)
- 11. Bright White (Sul-R:1001)
- 12. Pale Pink (Sul-R:1120)
- 13. Dk. Army Green (Sul-R:1210)
- 14. Avocado (Sul-R:1177)
- 15. Pale Pink (Sul-R:1120)
- 16. Dk. Army Green (Sul-R:1210)
- 17. Bright White (Sul-R:1001)

Butterfly_08-3x3.dst

3.01x2.98 inches; 18,298 stitches
17 thread changes; 13 colors

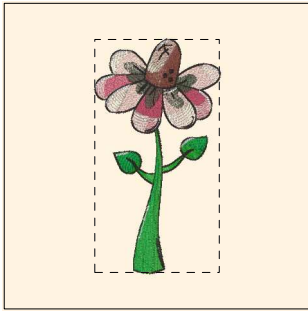


- 1. (Sul-R:1261)
- 2. (Sul-R:1320)
- 3. (Sul-R:520)
- 4. Med. Maple (Sul-R:1216)
- 5. (Sul-R:1319)
- 6. Cobalt Blue (Sul-R:526)
- 7. Dk. Periwinkle (Sul-R:1226)
- 8. Ivy Green (Sul-R:1277)
- 9. Lt. Avocado (Sul-R:1209)
- 10. Avocado (Sul-R:1177)
- 11. Bright White (Sul-R:1001)
- 12. Pale Pink (Sul-R:1120)
- 13. Dk. Army Green (Sul-R:1210)
- 14. Avocado (Sul-R:1177)
- 15. Pale Pink (Sul-R:1120)
- 16. Dk. Army Green (Sul-R:1210)
- 17. Bright White (Sul-R:1001)

Butterfly_08-4x4.dst

3.93x3.87 inches; 26,283 stitches
17 thread changes; 13 colors

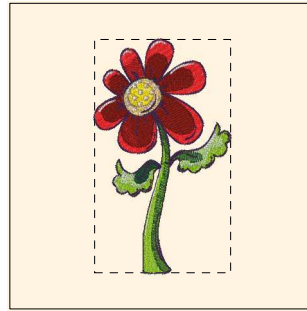
Printed 2/26/2010



- 1. Ivy Green (Sul-R:1277)
- 2. Bright Green (Sul-R:1278)
- 3. Brick (Sul-R:1081)
- 4. Med. Peach (Sul-R:1015)
- 5. Chestnut (Sul-R:1217)
- 6. Hedge Green (Sul-R:1272)
- 7. Cream (Sul-R:1022)
- 8. Dk. Tawny Brown (Sul-R:1059)
- 9. Bright White (Sul-R:1001)

Flower_01-5x7.dst

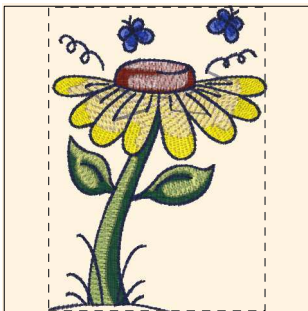
3.21x6.00 inches; 15,472 stitches
9 thread changes; 9 colors



- 1. Avocado (Sul-R:1177)
- 2. Jade Tint (Sul-R:1077)
- 3. Classic Green (Sul-R:1232)
- 4. (Sul-R:1319)
- 5. Cognac (Sul-R:1264)
- 6. Yellow (Sul-R:1023)
- 7. Med. Dk. Ecru (Sul-R:1054)
- 8. Purple Shadow (Sul-R:1299)
- 9. (Sul-R:520)
- 10. Bright White (Sul-R:1001)
- 11. Purple Shadow (Sul-R:1299)

Flower_02-5x7.dst

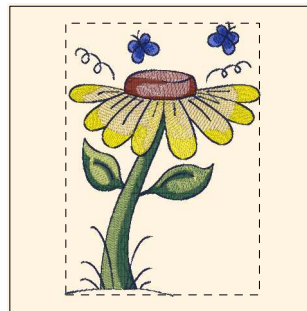
3.51x6.01 inches; 19,317 stitches
11 thread changes; 10 colors



- 1. Classic Green (Sul-R:1232)
- 2. Lt. Avocado (Sul-R:1209)
- 3. Mimosa Yellow (Sul-R:1187)
- 4. Coral Reef (Sul-R:1258)
- 5. Cognac (Sul-R:1264)
- 6. Pale Pink (Sul-R:1120)
- 7. Dk. Periwinkle (Sul-R:1226)
- 8. Blue Ribbon (Sul-R:572)
- 9. Med. Navy (Sul-R:1197)

Flower_03-4x4.dst

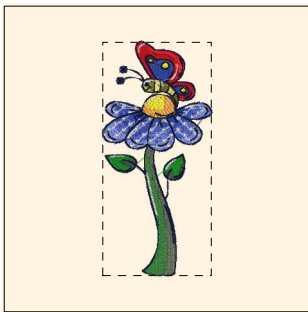
2.79x3.91 inches; 10,351 stitches
9 thread changes; 9 colors



- 1. Classic Green (Sul-R:1232)
- 2. Lt. Avocado (Sul-R:1209)
- 3. Mimosa Yellow (Sul-R:1187)
- 4. Coral Reef (Sul-R:1258)
- 5. Cognac (Sul-R:1264)
- 6. Pale Pink (Sul-R:1120)
- 7. Dk. Periwinkle (Sul-R:1226)
- 8. Blue Ribbon (Sul-R:572)
- 9. Med. Navy (Sul-R:1197)

Flower_03-5x7.dst

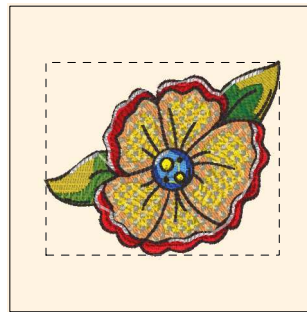
4.99x7.00 inches; 23,944 stitches
9 thread changes; 9 colors



- 1. Hedge Green (Sul-R:1272)
- 2. Ivy Green (Sul-R:1277)
- 3. Dk. Periwinkle (Sul-R:1226)
- 4. Cobalt Blue (Sul-R:526)
- 5. Mimosa Yellow (Sul-R:1187)
- 6. Apricot (Sul-R:1239)
- 7. Bright White (Sul-R:1001)
- 8. Blue Ribbon (Sul-R:572)
- 9. (Sul-R:1319)
- 10. Cobalt Blue (Sul-R:526)
- 11. Mimosa Yellow (Sul-R:1187)
- 12. Red Jubilee (Sul-R:1263)
- 13. Lt. Army Green (Sul-R:1156)
- 14. Maize Yellow (Sul-R:1167)
- 15. Deep Arctic Sky (Sul-R:505)
- 16. Bright White (Sul-R:1001)

Flower_04-5x7.dst

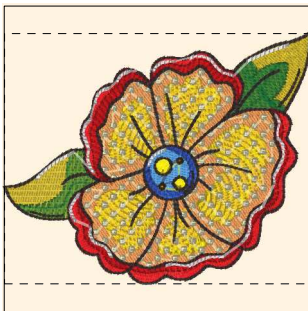
2.80x6.01 inches; 16,739 stitches
16 thread changes; 13 colors



- 1. (Sul-R:1244)
- 2. Xmas Green (Sul-R:1051)
- 3. Apricot (Sul-R:1239)
- 4. Mimosa Yellow (Sul-R:1187)
- 5. (Sul-R:1319)
- 6. Red Jubilee (Sul-R:1263)
- 7. Blue (Sul-R:1196)
- 8. Cobalt Blue (Sul-R:526)
- 9. Mimosa Yellow (Sul-R:1187)
- 10. Pale Yellow (Sul-R:1061)
- 11. Dk. Tawny Brown (Sul-R:1059)
- 12. Bright White (Sul-R:1001)

Flower_05-3x3.dst

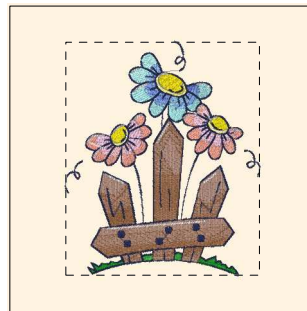
3.01x2.48 inches; 16,342 stitches
12 thread changes; 11 colors



- 1. (Sul-R:1244)
- 2. Xmas Green (Sul-R:1051)
- 3. Apricot (Sul-R:1239)
- 4. Mimosa Yellow (Sul-R:1187)
- 5. (Sul-R:1319)
- 6. Red Jubilee (Sul-R:1263)
- 7. Blue (Sul-R:1196)
- 8. Cobalt Blue (Sul-R:526)
- 9. Mimosa Yellow (Sul-R:1187)
- 10. Pale Yellow (Sul-R:1061)
- 11. Dk. Tawny Brown (Sul-R:1059)
- 12. Bright White (Sul-R:1001)

Flower_05-4x4.dst

3.93x3.22 inches; 22,630 stitches
12 thread changes; 11 colors

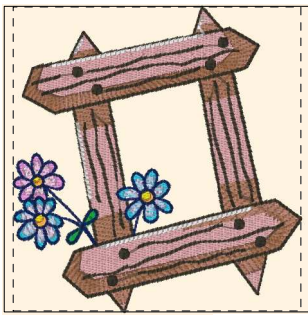


- 1. Ivy Green (Sul-R:1277)
- 2. (Sul-R:1269)
- 3. Nutmeg (Sul-R:521)
- 4. Lt. Teal (Sul-R:1045)
- 5. Dk. Periwinkle (Sul-R:1226)
- 6. Salmon Peach (Sul-R:1259)
- 7. Pink (Sul-R:1121)
- 8. Mimosa Yellow (Sul-R:1187)
- 9. Med. Ecru (Sul-R:1127)
- 10. Med. Navy (Sul-R:1197)
- 11. Bright White (Sul-R:1001)

Flowers_01-5x7.dst

4.99x6.00 inches; 25,873 stitches
11 thread changes; 11 colors

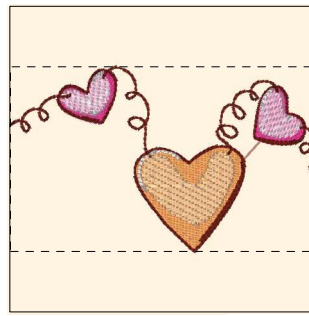
Printed 2/26/2010



- 1. Taupe (Sul-R:1213)
- 2. Nutmeg (Sul-R:521)
- 3. Dk. Army Green (Sul-R:1210)
- 4. Sweet Pink (Sul-R:1256)
- 5. Pink Tint (Sul-R:1068)
- 6. Turquoise (Sul-R:1095)
- 7. Pastel Pink (Sul-R:1225)
- 8. Ivy Green (Sul-R:1277)
- 9. Bright Green (Sul-R:1278)
- 10. Mimosa Yellow (Sul-R:1187)
- 11. Apricot (Sul-R:1239)
- 12. Bright Navy Blue (Sul-R:1042)
- 13. Bright White (Sul-R:1001)

Flowers_02-4x4.dst

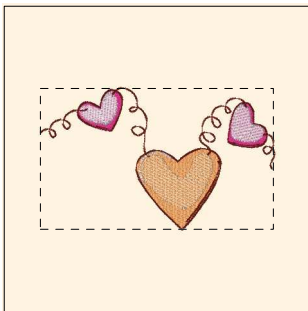
3.71x3.92 inches; 15,751 stitches
13 thread changes; 13 colors



- 1. Apricot (Sul-R:1239)
- 2. Pastel Peach (Sul-R:1017)
- 3. Deep Rose (Sul-R:1511)
- 4. Bright White (Sul-R:1001)
- 5. Cognac (Sul-R:1264)
- 6. Bright White (Sul-R:1001)

Hearts_01-4x4.dst

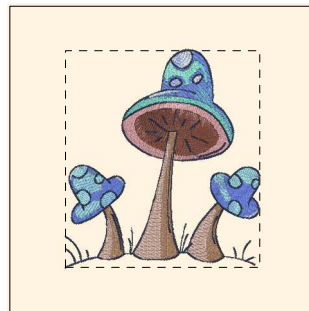
3.92x2.38 inches; 4,622 stitches
6 thread changes; 5 colors



- 1. Apricot (Sul-R:1239)
- 2. Pastel Peach (Sul-R:1017)
- 3. Deep Rose (Sul-R:1511)
- 4. Bright White (Sul-R:1001)
- 5. Cognac (Sul-R:1264)
- 6. Bright White (Sul-R:1001)

Hearts_01-5x7.dst

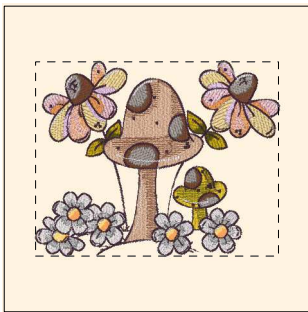
6.00x3.63 inches; 8,719 stitches
6 thread changes; 5 colors



- 1. Toast (Sul-R:1266)
- 2. Taupe (Sul-R:1213)
- 3. (Sul-R:535)
- 4. Pink Tint (Sul-R:1068)
- 5. Teal (Sul-R:1046)
- 6. Dk. Periwinkle (Sul-R:1226)
- 7. Lt. Teal (Sul-R:1045)
- 8. Bright White (Sul-R:1001)
- 9. Arctic Sky (Sul-R:643)
- 10. Bright White (Sul-R:1001)

Mushrooms_01-5x7.dst

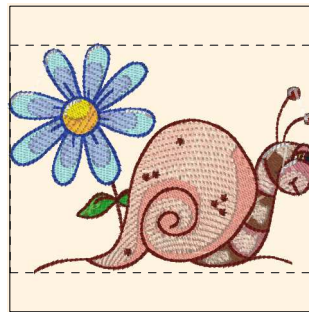
5.00x5.58 inches; 23,384 stitches
10 thread changes; 9 colors



- 1. Med. Army Green (Sul-R:1173)
- 2. (Sul-R:1334)
- 3. Apricot (Sul-R:1239)
- 4. Pink (Sul-R:1121)
- 5. Tawny Tan (Sul-R:1055)
- 6. Dk. Ecu (Sul-R:1128)
- 7. (Sul-R:1334)
- 8. Med. Army Green (Sul-R:1173)
- 9. (Sul-R:614)
- 10. Steel Gray (Sul-R:1011)
- 11. Lt. Silver (Sul-R:1236)
- 12. Steel Gray (Sul-R:1011)
- 13. Apricot (Sul-R:1239)
- 14. Tawny Tan (Sul-R:1055)
- 15. Dk. Chestnut (Sul-R:1189)
- 16. Bright White (Sul-R:1001)

Mushrooms_02-5x7.dst

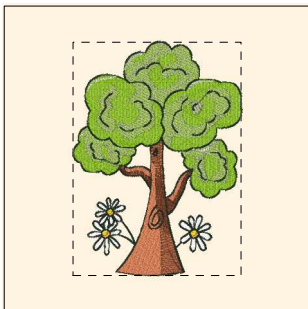
6.26x5.01 inches; 37,248 stitches
16 thread changes; 11 colors



- 1. Lt. Teal (Sul-R:1045)
- 2. Dusty Lavender (Sul-R:1254)
- 3. Mimosa Yellow (Sul-R:1187)
- 4. Apricot (Sul-R:1239)
- 5. Ivy Green (Sul-R:1277)
- 6. Nile Green (Sul-R:1274)
- 7. (Sul-R:614)
- 8. Dewberry (Sul-R:1304)
- 9. Blue Black (Sul-R:1182)
- 10. Bright White (Sul-R:1001)
- 11. Nile Green (Sul-R:1274)
- 12. Salmon Peach (Sul-R:1259)
- 13. Coral Reef (Sul-R:1258)
- 14. Cobalt Blue (Sul-R:526)
- 15. Cognac (Sul-R:1264)
- 16. Bright White (Sul-R:1001)

Snail-4x4.dst

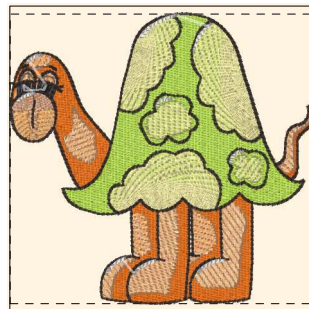
3.93x2.93 inches; 13,316 stitches
16 thread changes; 14 colors



- 1. Bittersweet (Sul-R:1313)
- 2. Tawny Brown (Sul-R:1058)
- 3. Avocado (Sul-R:1177)
- 4. Lt. Putty (Sul-R:1229)
- 5. Bright White (Sul-R:1001)
- 6. Mimosa Yellow (Sul-R:1187)
- 7. Apricot (Sul-R:1239)
- 8. Dk. Khaki (Sul-R:1103)
- 9. Bright White (Sul-R:1001)

Tree_01-5x7.dst

4.33x6.01 inches; 26,435 stitches
9 thread changes; 8 colors

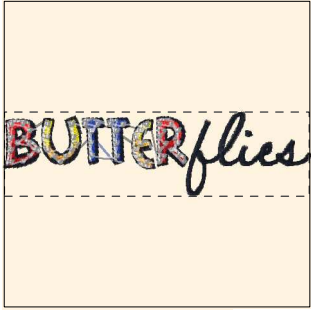


- 1. Cinnamon (Sul-R:568)
- 2. (Sul-R:622)
- 3. Dk. Ecu (Sul-R:1128)
- 4. Khaki (Sul-R:1212)
- 5. Bright White (Sul-R:1001)
- 6. Blue Black (Sul-R:1182)
- 7. Pastel Peach (Sul-R:1017)
- 8. (Sul-R:1282)
- 9. Primrose (Sul-R:1066)
- 10. Dk. Tawny Brown (Sul-R:1059)
- 11. Bright White (Sul-R:1001)

Turtle-4x4.dst


3.93x3.73 inches; 18,319 stitches
11 thread changes; 10 colors

Printed 2/26/2010



- 1. (Sul-R:1319)
- 2. Red Jubilee (Sul-R:1263)
- 3. Mimosa Yellow (Sul-R:1187)
- 4. Apricot (Sul-R:1239)
- 5. Cobalt Blue (Sul-R:526)
- 6. Blue Ribbon (Sul-R:572)
- 7. Blue Black (Sul-R:1182)
- 8. Bright White (Sul-R:1001)

Wordart-4x4.dst
3.93x1.09 inches; 5,594 stitches
8 thread changes; 8 colors



- 1. (Sul-R:1319)
- 2. Red Jubilee (Sul-R:1263)
- 3. Mimosa Yellow (Sul-R:1187)
- 4. Apricot (Sul-R:1239)
- 5. Cobalt Blue (Sul-R:526)
- 6. Blue Ribbon (Sul-R:572)
- 7. Blue Black (Sul-R:1182)
- 8. Bright White (Sul-R:1001)

Wordart-5x7.dst
6.00x1.66 inches; 8,543 stitches
8 thread changes; 8 colors