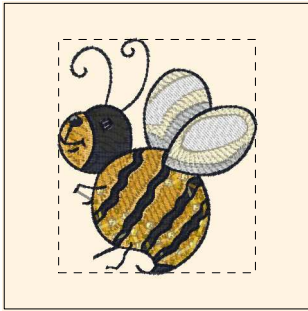


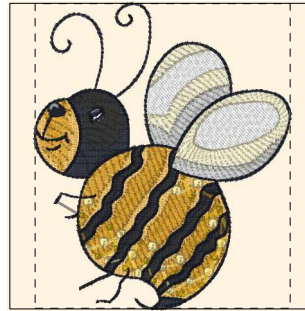
Printed 3/19/2010



- 1. Cornsilk (Sul-R:502)
- 2. Blue Black (Sul-R:1182)
- 3. Dk. Army Green (Sul-R:1210)
- 4. Mine Gold (Sul-R:1025)
- 5. Bright White (Sul-R:1001)
- 6. Gold (Sul-R:1070)
- 7. (Sul-R:1334)
- 8. Bright White (Sul-R:1001)
- 9. Pale Yellow (Sul-R:1061)
- 10. Gray Khaki (Sul-R:1321)
- 11. Blue Black (Sul-R:1182)
- 12. Bright White (Sul-R:1001)

**Bee1-3x3.dst**

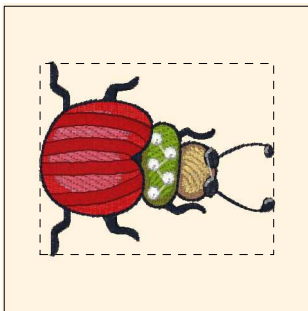
2.54x3.01 inches; 10,572 stitches  
12 thread changes; 9 colors



- 1. Cornsilk (Sul-R:502)
- 2. Blue Black (Sul-R:1182)
- 3. Dk. Army Green (Sul-R:1210)
- 4. Mine Gold (Sul-R:1025)
- 5. Bright White (Sul-R:1001)
- 6. Gold (Sul-R:1070)
- 7. (Sul-R:1334)
- 8. Bright White (Sul-R:1001)
- 9. Pale Yellow (Sul-R:1061)
- 10. Gray Khaki (Sul-R:1321)
- 11. Blue Black (Sul-R:1182)
- 12. Bright White (Sul-R:1001)

**Bee1-4x4.dst**

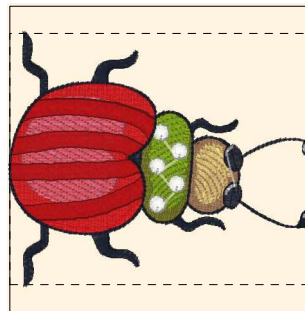
3.28x3.93 inches; 15,106 stitches  
12 thread changes; 9 colors



- 1. Blue Black (Sul-R:1182)
- 2. Toast (Sul-R:1266)
- 3. Tawny Tan (Sul-R:1055)
- 4. Lt. Army Green (Sul-R:1156)
- 5. Avocado (Sul-R:1177)
- 6. Lipstick (Sul-R:561)
- 7. Dk. Mauve (Sul-R:1119)
- 8. Red Jubilee (Sul-R:1263)
- 9. Bright White (Sul-R:1001)
- 10. Blue Black (Sul-R:1182)
- 11. Bright White (Sul-R:1001)

**Beetle1-3x3.dst**

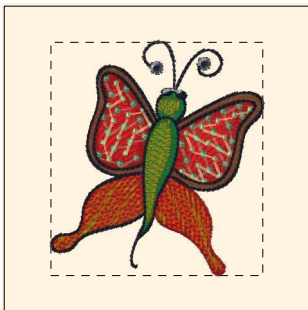
3.01x2.46 inches; 7,082 stitches  
11 thread changes; 9 colors



- 1. Blue Black (Sul-R:1182)
- 2. Toast (Sul-R:1266)
- 3. Tawny Tan (Sul-R:1055)
- 4. Lt. Army Green (Sul-R:1156)
- 5. Avocado (Sul-R:1177)
- 6. Lipstick (Sul-R:561)
- 7. Dk. Mauve (Sul-R:1119)
- 8. Red Jubilee (Sul-R:1263)
- 9. Bright White (Sul-R:1001)
- 10. Blue Black (Sul-R:1182)
- 11. Bright White (Sul-R:1001)

**Beetle1-4x4.dst**

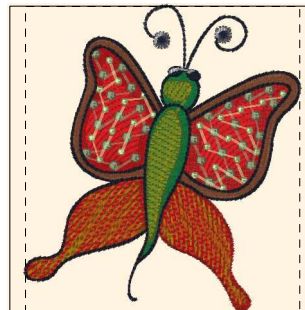
3.93x3.24 inches; 10,439 stitches  
11 thread changes; 9 colors



- 1. Red Jubilee (Sul-R:1263)
- 2. Xmas Green (Sul-R:1051)
- 3. (Sul-R:614)
- 4. (Sul-R:1262)
- 5. (Sul-R:1319)
- 6. (Sul-R:1262)
- 7. Lt. Khaki (Sul-R:1211)
- 8. Pastel Yellow-Green (Sul-R:1104)
- 9. Blue Black (Sul-R:1182)
- 10. Bright White (Sul-R:1001)

**Butterfly1-3x3.dst**

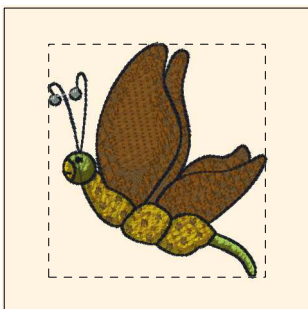
2.73x3.01 inches; 12,304 stitches  
10 thread changes; 9 colors



- 1. Red Jubilee (Sul-R:1263)
- 2. Xmas Green (Sul-R:1051)
- 3. (Sul-R:614)
- 4. (Sul-R:1262)
- 5. (Sul-R:1319)
- 6. (Sul-R:1262)
- 7. Lt. Khaki (Sul-R:1211)
- 8. Pastel Yellow-Green (Sul-R:1104)
- 9. Blue Black (Sul-R:1182)
- 10. Bright White (Sul-R:1001)

**Butterfly1-4x4.dst**

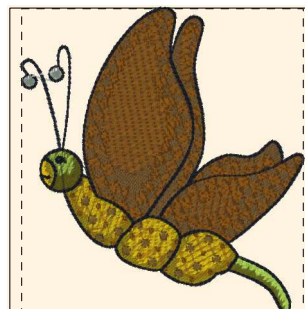
3.54x3.93 inches; 17,336 stitches  
10 thread changes; 9 colors



- 1. Lt. Brown (Sul-R:1170)
- 2. Med. Tawny Tan (Sul-R:1056)
- 3. Blue Black (Sul-R:1182)
- 4. Gold Green (Sul-R:1227)
- 5. (Sul-R:1334)
- 6. Med. Army Green (Sul-R:1173)
- 7. Deep Chartreuse (Sul-R:1332)
- 8. Bright White (Sul-R:1001)
- 9. Med. Tawny Tan (Sul-R:1056)
- 10. Lt. Brown (Sul-R:1170)
- 11. Khaki (Sul-R:1212)
- 12. Blue Black (Sul-R:1182)
- 13. Bright White (Sul-R:1001)

**Butterfly2-3x3.dst**

2.80x3.00 inches; 9,502 stitches  
13 thread changes; 9 colors

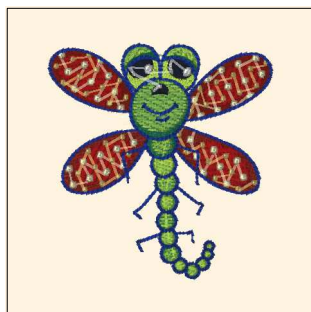


- 1. Lt. Brown (Sul-R:1170)
- 2. Med. Tawny Tan (Sul-R:1056)
- 3. Blue Black (Sul-R:1182)
- 4. Gold Green (Sul-R:1227)
- 5. (Sul-R:1334)
- 6. Med. Army Green (Sul-R:1173)
- 7. Deep Chartreuse (Sul-R:1332)
- 8. Bright White (Sul-R:1001)
- 9. Med. Tawny Tan (Sul-R:1056)
- 10. Lt. Brown (Sul-R:1170)
- 11. Khaki (Sul-R:1212)
- 12. Blue Black (Sul-R:1182)
- 13. Bright White (Sul-R:1001)

**Butterfly2-4x4.dst**

3.63x3.92 inches; 13,853 stitches  
13 thread changes; 9 colors

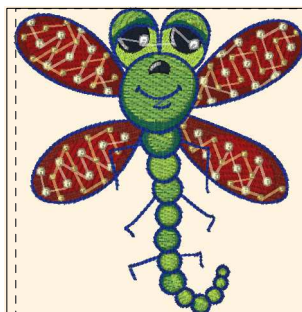
Printed 3/19/2010



- 1. Cognac (Sul-R:1264)
- 2. Mallard Green (Sul-R:1208)
- 3. (Sul-R:1282)
- 4. Red Jubilee (Sul-R:1263)
- 5. Pale Yellow (Sul-R:1061)
- 6. Tawny Tan (Sul-R:1055)
- 7. Blue Black (Sul-R:1182)
- 8. Blue Ribbon (Sul-R:572)
- 9. Blue Black (Sul-R:1182)
- 10. Bright White (Sul-R:1001)

**Dragonfly1-3x3.dst**

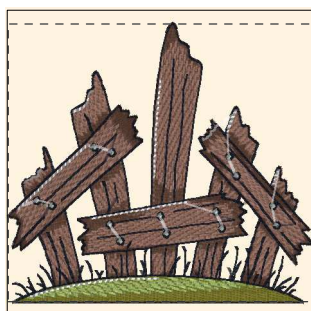
2.86x3.01 inches; 12,842 stitches  
10 thread changes; 9 colors



- 1. Cognac (Sul-R:1264)
- 2. Mallard Green (Sul-R:1208)
- 3. (Sul-R:1282)
- 4. Red Jubilee (Sul-R:1263)
- 5. Pale Yellow (Sul-R:1061)
- 6. Tawny Tan (Sul-R:1055)
- 7. Blue Black (Sul-R:1182)
- 8. Blue Ribbon (Sul-R:572)
- 9. Blue Black (Sul-R:1182)
- 10. Bright White (Sul-R:1001)

**Dragonfly1-4x4.dst**

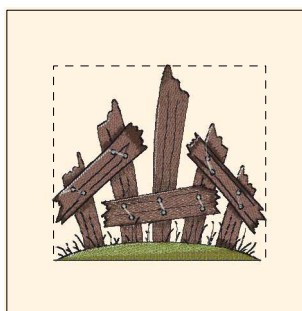
3.71x3.93 inches; 18,044 stitches  
10 thread changes; 9 colors



- 1. Sable Brown (Sul-R:1186)
- 2. (Sul-R:1269)
- 3. Lt. Army Green (Sul-R:1156)
- 4. Chartreuse (Sul-R:1322)
- 5. Dk. Gray Khaki (Sul-R:1270)
- 6. Blue Black (Sul-R:1182)
- 7. Bright White (Sul-R:1001)

**Fence1-4x4.dst**

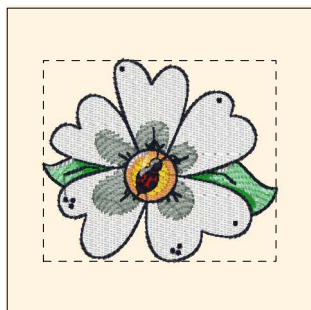
3.91x3.58 inches; 18,012 stitches  
7 thread changes; 7 colors



- 1. Sable Brown (Sul-R:1186)
- 2. (Sul-R:1269)
- 3. Lt. Army Green (Sul-R:1156)
- 4. Chartreuse (Sul-R:1322)
- 5. Dk. Gray Khaki (Sul-R:1270)
- 6. Blue Black (Sul-R:1182)
- 7. Bright White (Sul-R:1001)

**Fence1-5x7.dst**

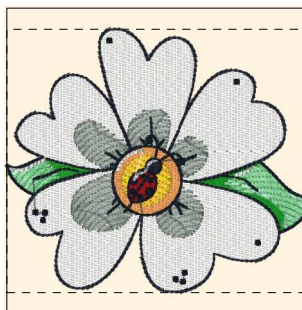
5.47x5.00 inches; 29,936 stitches  
7 thread changes; 7 colors



- 1. Ivy Green (Sul-R:1277)
- 2. Mint Green (Sul-R:1047)
- 3. Bright White (Sul-R:1001)
- 4. Khaki (Sul-R:1212)
- 5. Apricot (Sul-R:1239)
- 6. Mimosa Yellow (Sul-R:1187)
- 7. Red Jubilee (Sul-R:1263)
- 8. Blue Black (Sul-R:1182)
- 9. Bright White (Sul-R:1001)

**Flower1-3x3.dst**

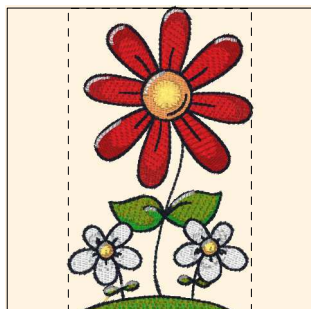
3.00x2.59 inches; 10,823 stitches  
9 thread changes; 8 colors



- 1. Ivy Green (Sul-R:1277)
- 2. Mint Green (Sul-R:1047)
- 3. Bright White (Sul-R:1001)
- 4. Khaki (Sul-R:1212)
- 5. Apricot (Sul-R:1239)
- 6. Mimosa Yellow (Sul-R:1187)
- 7. Red Jubilee (Sul-R:1263)
- 8. Blue Black (Sul-R:1182)
- 9. Bright White (Sul-R:1001)

**Flower1-4x4.dst**

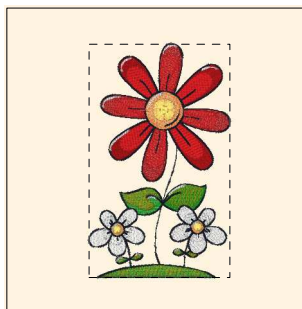
3.94x3.39 inches; 16,405 stitches  
9 thread changes; 8 colors



- 1. Red Jubilee (Sul-R:1263)
- 2. (Sul-R:1319)
- 3. Ivy Green (Sul-R:1277)
- 4. Bright White (Sul-R:1001)
- 5. Silver Gray (Sul-R:1218)
- 6. Apricot (Sul-R:1239)
- 7. Maize Yellow (Sul-R:1167)
- 8. (Sul-R:1262)
- 9. Blue Black (Sul-R:1182)
- 10. Bright White (Sul-R:1001)

**Flowers1-4x4.dst**

2.36x3.93 inches; 12,858 stitches  
10 thread changes; 9 colors

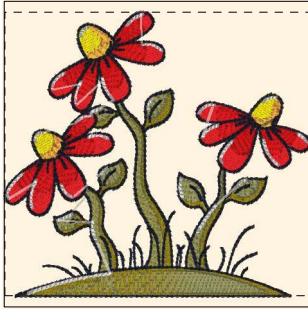


- 1. Red Jubilee (Sul-R:1263)
- 2. (Sul-R:1319)
- 3. Ivy Green (Sul-R:1277)
- 4. Bright White (Sul-R:1001)
- 5. Silver Gray (Sul-R:1218)
- 6. Apricot (Sul-R:1239)
- 7. Maize Yellow (Sul-R:1167)
- 8. (Sul-R:1262)
- 9. Blue Black (Sul-R:1182)
- 10. Bright White (Sul-R:1001)

**Flowers1-5x7.dst**

3.63x6.01 inches; 23,466 stitches  
10 thread changes; 9 colors

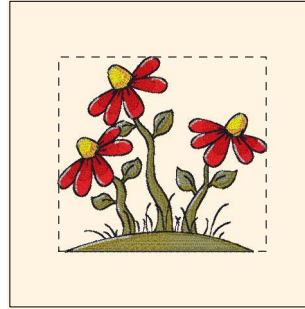
Printed 3/19/2010



- 1. (Sul-R:1245)
- 2. Lt. Khaki (Sul-R:1211)
- 3. (Sul-R:1319)
- 4. Lipstick (Sul-R:561)
- 5. Mimosa Yellow (Sul-R:1187)
- 6. Apricot (Sul-R:1239)
- 7. Blue Black (Sul-R:1182)
- 8. Bright White (Sul-R:1001)

**Flowers2-4x4.dst**

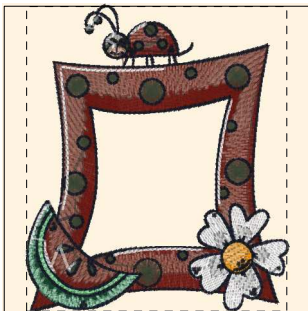
3.92x3.66 inches; 16,839 stitches  
8 thread changes; 8 colors



- 1. (Sul-R:1245)
- 2. Lt. Khaki (Sul-R:1211)
- 3. (Sul-R:1319)
- 4. Lipstick (Sul-R:561)
- 5. Mimosa Yellow (Sul-R:1187)
- 6. Apricot (Sul-R:1239)
- 7. Blue Black (Sul-R:1182)
- 8. Bright White (Sul-R:1001)

**Flowers2-5x7.dst**

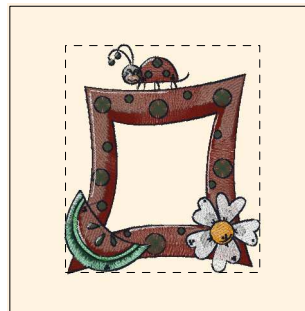
5.34x5.00 inches; 25,445 stitches  
8 thread changes; 8 colors



- 1. Cognac (Sul-R:1264)
- 2. (Sul-R:1269)
- 3. Classic Green (Sul-R:1232)
- 4. Ivy Green (Sul-R:1277)
- 5. Mint Green (Sul-R:1047)
- 6. Bright White (Sul-R:1001)
- 7. Gray Khaki (Sul-R:1321)
- 8. Orange Sunrise (Sul-R:1238)
- 9. (Sul-R:622)
- 10. (Sul-R:1273)
- 11. Gray Khaki (Sul-R:1321)
- 12. Bright White (Sul-R:1001)
- 13. Toast (Sul-R:1266)
- 14. Med. Dk. Ecru (Sul-R:1054)
- 15. Blue Black (Sul-R:1182)
- 16. Bright White (Sul-R:1001)

**Frame1-4x4.dst**

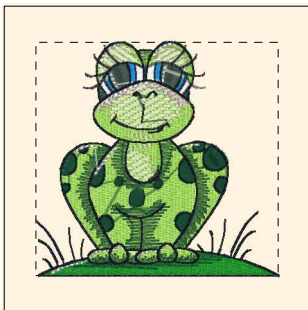
3.36x3.93 inches; 19,426 stitches  
16 thread changes; 13 colors



- 1. Cognac (Sul-R:1264)
- 2. (Sul-R:1269)
- 3. Classic Green (Sul-R:1232)
- 4. Ivy Green (Sul-R:1277)
- 5. Mint Green (Sul-R:1047)
- 6. Bright White (Sul-R:1001)
- 7. Gray Khaki (Sul-R:1321)
- 8. Orange Sunrise (Sul-R:1238)
- 9. (Sul-R:622)
- 10. (Sul-R:1273)
- 11. Gray Khaki (Sul-R:1321)
- 12. Bright White (Sul-R:1001)
- 13. Toast (Sul-R:1266)
- 14. Med. Dk. Ecru (Sul-R:1054)
- 15. Blue Black (Sul-R:1182)
- 16. Bright White (Sul-R:1001)

**Frame1-5x7.dst**

5.01x5.84 inches; 35,127 stitches  
16 thread changes; 13 colors



- 1. Ivy Green (Sul-R:1277)
- 2. Classic Green (Sul-R:1232)
- 3. Lime Green (Sul-R:1510)
- 4. Classic Green (Sul-R:1232)
- 5. Lime Green (Sul-R:1510)
- 6. Cream (Sul-R:1022)
- 7. Pastel Pink (Sul-R:1225)
- 8. Sapphire (Sul-R:1534)
- 9. Evergreen (Sul-R:1271)
- 10. Bright White (Sul-R:1001)
- 11. Classic Green (Sul-R:1232)
- 12. Blue Black (Sul-R:1182)
- 13. Bright White (Sul-R:1001)

**Frog1-4x4.dst**

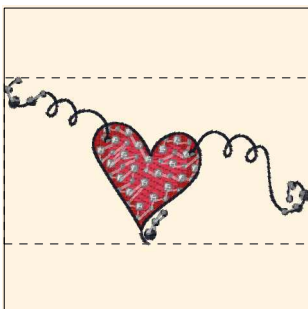
3.13x3.01 inches; 11,831 stitches  
13 thread changes; 9 colors



- 1. Ivy Green (Sul-R:1277)
- 2. Classic Green (Sul-R:1232)
- 3. Lime Green (Sul-R:1510)
- 4. Classic Green (Sul-R:1232)
- 5. Lime Green (Sul-R:1510)
- 6. Cream (Sul-R:1022)
- 7. Hot Pink (Sul-R:1109)
- 8. Pastel Pink (Sul-R:1225)
- 9. Sapphire (Sul-R:1534)
- 10. Evergreen (Sul-R:1271)
- 11. Bright White (Sul-R:1001)
- 12. Classic Green (Sul-R:1232)
- 13. Ivy Green (Sul-R:1277)
- 14. Orange Sunrise (Sul-R:1238)
- 15. (Sul-R:622)
- 16. Blue Black (Sul-R:1182)
- 17. Bright White (Sul-R:1001)

**Frog1-5x7.dst**

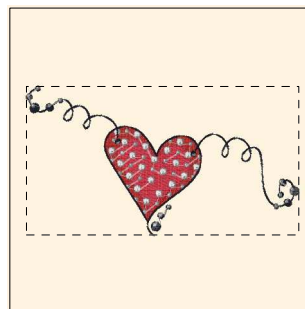
3.13x5.09 inches; 18,446 stitches  
17 thread changes; 12 colors



- 1. Red Jubilee (Sul-R:1263)
- 2. Deep Coral (Sul-R:1257)
- 3. Dk. Whisper Gray (Sul-R:1327)
- 4. Blue Black (Sul-R:1182)
- 5. Dk. Whisper Gray (Sul-R:1327)

**Heart1-4x4.dst**

3.94x2.14 inches; 4,170 stitches  
5 thread changes; 4 colors

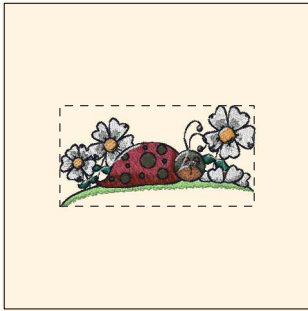


- 1. Red Jubilee (Sul-R:1263)
- 2. Deep Coral (Sul-R:1257)
- 3. Dk. Whisper Gray (Sul-R:1327)
- 4. Blue Black (Sul-R:1182)
- 5. Dk. Whisper Gray (Sul-R:1327)

**Heart1-5x7.dst**

7.02x3.83 inches; 8,758 stitches  
5 thread changes; 4 colors

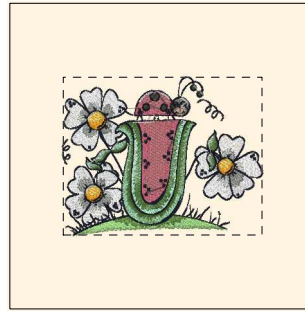
Printed 3/19/2010



- 1. Lt. Grass Green (Sul-R:1100)
- 2. Classic Green (Sul-R:1232)
- 3. (Sul-R:1281)
- 4. Bright White (Sul-R:1001)
- 5. (Sul-R:610)
- 6. Orange Sunrise (Sul-R:1238)
- 7. Med. Dk. Ecrú (Sul-R:1054)
- 8. Cognac (Sul-R:1264)
- 9. Brick (Sul-R:1081)
- 10. (Sul-R:1273)
- 11. (Sul-R:610)
- 12. Mink Brown (Sul-R:1267)
- 13. Tan (Sul-R:1126)
- 14. Bright White (Sul-R:1001)
- 15. (Sul-R:1273)
- 16. Blue Black (Sul-R:1182)
- 17. Bright White (Sul-R:1001)

**Ladybug1-5x7.dst**

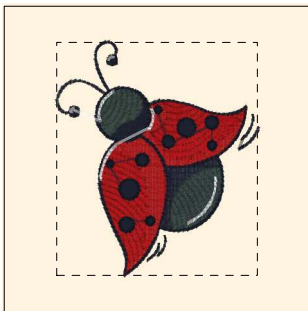
5.01x2.59 inches; 18,126 stitches  
17 thread changes; 13 colors



- 1. Lt. Grass Green (Sul-R:1100)
- 2. Bright White (Sul-R:1001)
- 3. (Sul-R:610)
- 4. Brick (Sul-R:1081)
- 5. (Sul-R:1269)
- 6. Mint Green (Sul-R:1047)
- 7. Med. Dk. Avocado (Sul-R:1176)
- 8. Mint Green (Sul-R:1047)
- 9. Orange Sunrise (Sul-R:1238)
- 10. Lemon Yellow (Sul-R:1067)
- 11. (Sul-R:1273)
- 12. Gray Khaki (Sul-R:1321)
- 13. Bright White (Sul-R:1001)
- 14. Toast (Sul-R:1266)
- 15. Med. Dk. Ecrú (Sul-R:1054)
- 16. Blue Black (Sul-R:1182)
- 17. Bright White (Sul-R:1001)

**Ladybug2-5x7.dst**

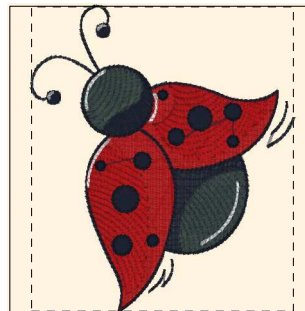
5.13x4.07 inches; 30,040 stitches  
17 thread changes; 14 colors



- 1. Blue Black (Sul-R:1182)
- 2. Red Jubilee (Sul-R:1263)
- 3. Evergreen (Sul-R:1271)
- 4. Red Jubilee (Sul-R:1263)
- 5. Blue Black (Sul-R:1182)
- 6. Bright White (Sul-R:1001)

**Ladybug3-3x3.dst**

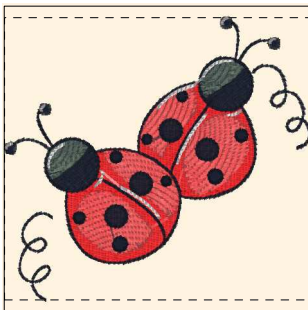
2.59x3.00 inches; 7,124 stitches  
6 thread changes; 4 colors



- 1. Blue Black (Sul-R:1182)
- 2. Red Jubilee (Sul-R:1263)
- 3. Evergreen (Sul-R:1271)
- 4. Red Jubilee (Sul-R:1263)
- 5. Blue Black (Sul-R:1182)
- 6. Bright White (Sul-R:1001)

**Ladybug3-4x4.dst**

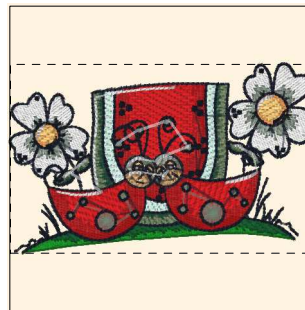
3.37x3.92 inches; 10,529 stitches  
6 thread changes; 4 colors



- 1. Blue Black (Sul-R:1182)
- 2. (Sul-R:1319)
- 3. Khaki (Sul-R:1212)
- 4. Dark Peach (Sul-R:1020)
- 5. Blue Black (Sul-R:1182)
- 6. Bright White (Sul-R:1001)

**Ladybugs1-4x4.dst**

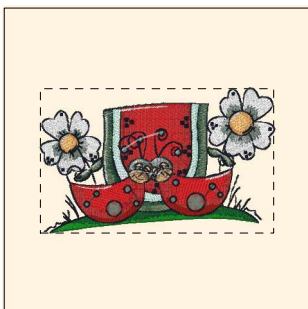
3.93x3.63 inches; 9,703 stitches  
6 thread changes; 5 colors



- 1. Ivy Green (Sul-R:1277)
- 2. Classic Green (Sul-R:1232)
- 3. Lt. Khaki (Sul-R:1211)
- 4. Mint Green (Sul-R:1047)
- 5. Powder Blue Tint (Sul-R:1151)
- 6. Red Jubilee (Sul-R:1263)
- 7. (Sul-R:1319)
- 8. Khaki (Sul-R:1212)
- 9. Gray Khaki (Sul-R:1321)
- 10. Toast (Sul-R:1266)
- 11. (Sul-R:622)
- 12. Bright White (Sul-R:1001)
- 13. Khaki (Sul-R:1212)
- 14. Apricot (Sul-R:1239)
- 15. Tawny Tan (Sul-R:1055)
- 16. Blue Black (Sul-R:1182)
- 17. Bright White (Sul-R:1001)
- 18. Blue Black (Sul-R:1182)

**Ladybugs2-4x4.dst**

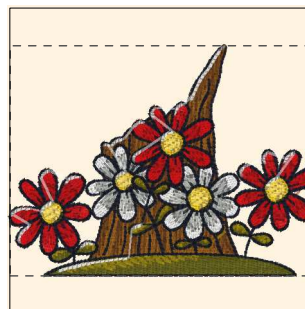
3.92x2.44 inches; 19,347 stitches  
18 thread changes; 15 colors



- 1. Ivy Green (Sul-R:1277)
- 2. Classic Green (Sul-R:1232)
- 3. Lt. Khaki (Sul-R:1211)
- 4. Mint Green (Sul-R:1047)
- 5. Powder Blue Tint (Sul-R:1151)
- 6. Red Jubilee (Sul-R:1263)
- 7. (Sul-R:1319)
- 8. Khaki (Sul-R:1212)
- 9. Gray Khaki (Sul-R:1321)
- 10. Toast (Sul-R:1266)
- 11. (Sul-R:622)
- 12. Bright White (Sul-R:1001)
- 13. Khaki (Sul-R:1212)
- 14. Apricot (Sul-R:1239)
- 15. Tawny Tan (Sul-R:1055)
- 16. Blue Black (Sul-R:1182)
- 17. Bright White (Sul-R:1001)
- 18. Blue Black (Sul-R:1182)

**Ladybugs2-5x7.dst**

6.01x3.72 inches; 34,781 stitches  
18 thread changes; 15 colors

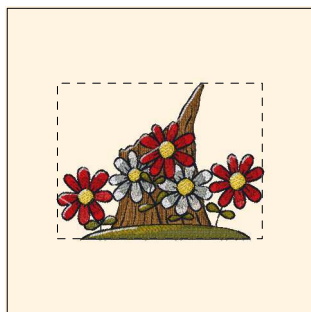


- 1. Med. Tawny Tan (Sul-R:1056)
- 2. Dk. Tawny Tan (Sul-R:1057)
- 3. Med. Army Green (Sul-R:1173)
- 4. (Sul-R:1262)
- 5. Bright White (Sul-R:1001)
- 6. (Sul-R:610)
- 7. Lipstick (Sul-R:561)
- 8. Red Jubilee (Sul-R:1263)
- 9. (Sul-R:1261)
- 10. Tawny Tan (Sul-R:1055)
- 11. Med. Army Green (Sul-R:1173)
- 12. (Sul-R:1262)
- 13. Blue Black (Sul-R:1182)
- 14. Bright White (Sul-R:1001)

**Stump1-4x4.dst**

3.93x2.97 inches; 19,817 stitches  
14 thread changes; 11 colors

Printed 3/19/2010



- 1. Med. Tawny Tan (Sul-R:1056)
- 2. Dk. Tawny Tan (Sul-R:1057)
- 3. Med. Army Green (Sul-R:1173)
- 4. (Sul-R:1262)
- 5. Bright White (Sul-R:1001)
- 6. (Sul-R:610)
- 7. Lipstick (Sul-R:561)
- 8. Red Jubilee (Sul-R:1263)
- 9. (Sul-R:1261)
- 10. Tawny Tan (Sul-R:1055)
- 11. Med. Army Green (Sul-R:1173)
- 12. (Sul-R:1262)
- 13. Blue Black (Sul-R:1182)
- 14. Bright White (Sul-R:1001)

**Stump1-5x7.dst**

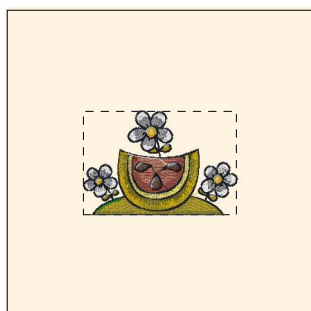
5.28x4.01 inches; 30,073 stitches  
14 thread changes; 11 colors



- 1. Classic Green (Sul-R:1232)
- 2. (Sul-R:1244)
- 3. Lt. Khaki (Sul-R:1211)
- 4. Blue Black (Sul-R:1182)
- 5. Lt. Brown (Sul-R:1170)
- 6. Khaki (Sul-R:1212)
- 7. Tawny Tan (Sul-R:1055)
- 8. Hot Pink (Sul-R:1109)
- 9. Red Jubilee (Sul-R:1263)
- 10. Apricot (Sul-R:1239)
- 11. Bright White (Sul-R:1001)
- 12. Blue Black (Sul-R:1182)

**Turtle1-4x4.dst**

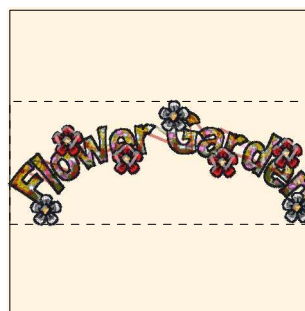
3.76x3.95 inches; 19,951 stitches  
12 thread changes; 11 colors



- 1. Lt. Army Green (Sul-R:1156)
- 2. (Sul-R:1334)
- 3. Cognac (Sul-R:1264)
- 4. Dk. Ecru (Sul-R:1128)
- 5. Pale Yellow (Sul-R:1061)
- 6. Maize Yellow (Sul-R:1167)
- 7. Bright White (Sul-R:1001)
- 8. Gray (Sul-R:1219)
- 9. Yellow Orange (Sul-R:1137)
- 10. Maize Yellow (Sul-R:1167)
- 11. Dk. Tawny Tan (Sul-R:1057)
- 12. Gray (Sul-R:1219)
- 13. Blue Black (Sul-R:1182)
- 14. Ivy Green (Sul-R:1277)
- 15. Bright White (Sul-R:1001)

**Watermelon-4x4.dst**

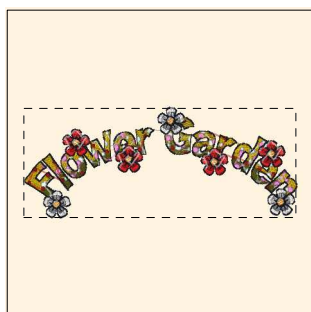
3.94x2.67 inches; 14,935 stitches  
15 thread changes; 12 colors



- 1. Med. Army Green (Sul-R:1173)
- 2. (Sul-R:1334)
- 3. Pale Green (Sul-R:1331)
- 4. Sweet Pink (Sul-R:1256)
- 5. Red Jubilee (Sul-R:1263)
- 6. (Sul-R:1319)
- 7. Red Jubilee (Sul-R:1263)
- 8. Bright White (Sul-R:1001)
- 9. Gray (Sul-R:1219)
- 10. (Sul-R:1314)
- 11. Tawny Tan (Sul-R:1055)
- 12. Blue Black (Sul-R:1182)
- 13. Bright White (Sul-R:1001)

**Wordart1-4x4.dst**

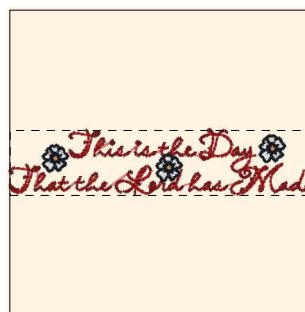
3.93x1.59 inches; 11,716 stitches  
13 thread changes; 11 colors



- 1. Med. Army Green (Sul-R:1173)
- 2. (Sul-R:1334)
- 3. Pale Green (Sul-R:1331)
- 4. Sweet Pink (Sul-R:1256)
- 5. Red Jubilee (Sul-R:1263)
- 6. (Sul-R:1319)
- 7. Red Jubilee (Sul-R:1263)
- 8. Bright White (Sul-R:1001)
- 9. Gray (Sul-R:1219)
- 10. (Sul-R:1314)
- 11. Tawny Tan (Sul-R:1055)
- 12. Blue Black (Sul-R:1182)
- 13. Bright White (Sul-R:1001)

**Wordart1-5x7.dst**

7.00x2.81 inches; 21,676 stitches  
13 thread changes; 11 colors



- 1. Red Jubilee (Sul-R:1263)
- 2. Bright White (Sul-R:1001)
- 3. Apricot (Sul-R:1239)
- 4. Blue Black (Sul-R:1182)

**Wordart2-4x4.dst**

3.93x0.84 inches; 3,462 stitches  
4 thread changes; 4 colors



- 1. Red Jubilee (Sul-R:1263)
- 2. Bright White (Sul-R:1001)
- 3. Apricot (Sul-R:1239)
- 4. Blue Black (Sul-R:1182)

**Wordart2-5x7.dst**

7.00x1.51 inches; 5,740 stitches  
4 thread changes; 4 colors